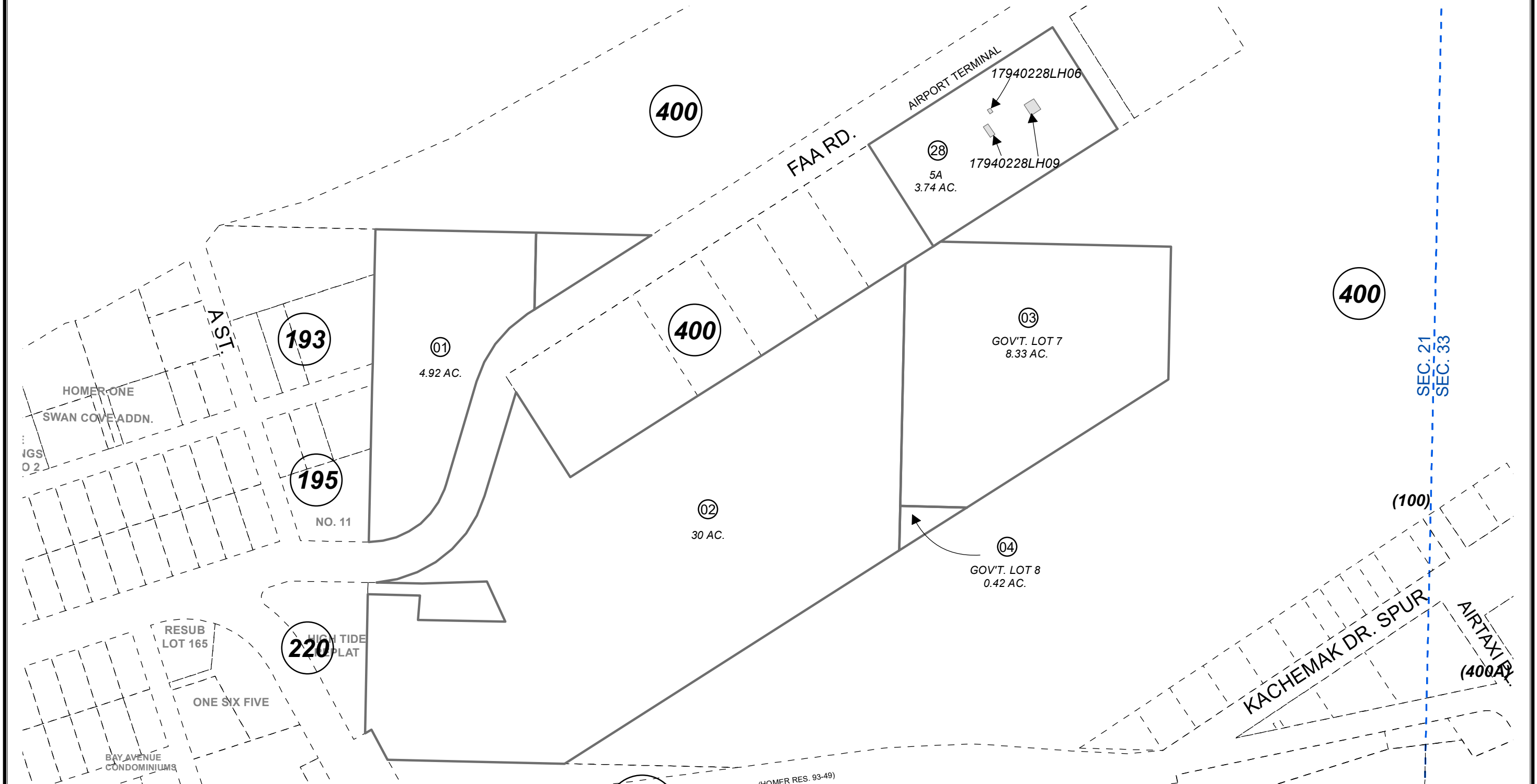


POR. SEC. 21, T06S, R13W, S.M.

179-402



**BK
181**

FEBRUARY 5, 2021

For 2020 assessment roll		
Delete	Add	Revise
	To	28
	(CHANGED LH02 TO LH09)	

Assessor's Map
Kenai Peninsula Borough

HOMER AIRPORT TERMINAL SPACE
LEASE PARCELS RESIDE ON PARCEL
NO. 179-402-28

This map is prepared for Kenai Peninsula Borough Assessing Dept. use only and is not intended for conveyance nor is it a survey.
Note- Assessor's block Numbers Shown in Elipses
Assessor's Parcel Numbers Shown in Circles

