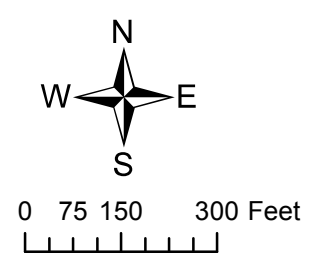
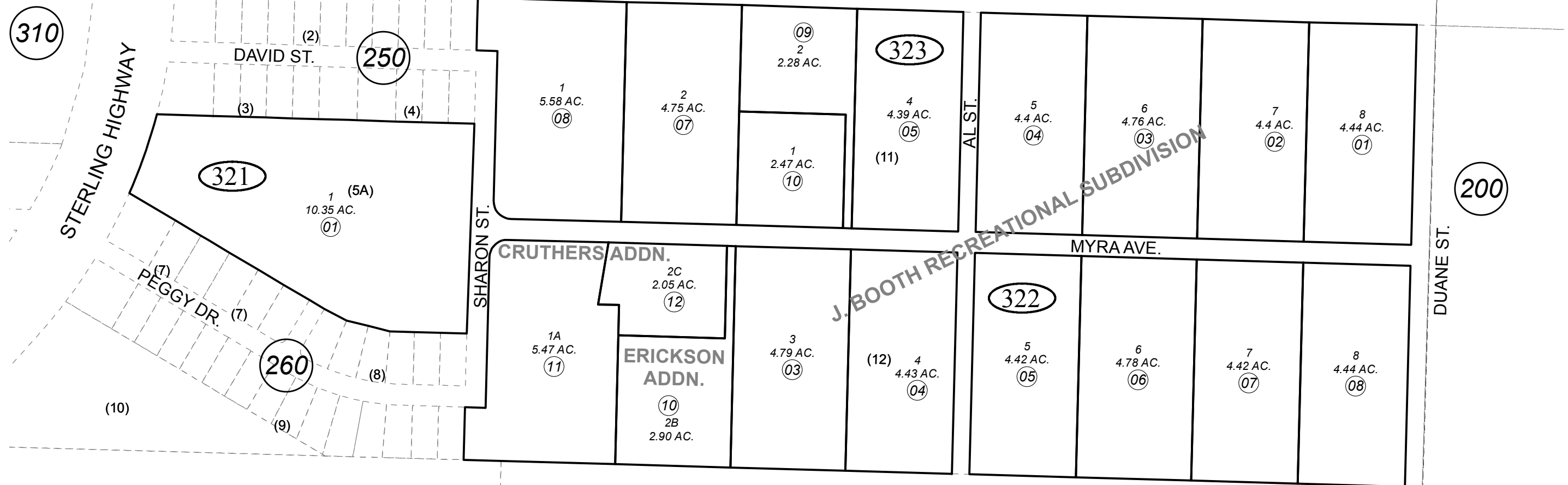


AK AVE.

R15W  
R14W

SEC. 36  
SEC. 31



JUNE 28, 2017

For 2018 assessment roll		
Delete	Add	Revise
	To	
32201	32211	
32209	32212	

Assessor's Map  
Kenai Peninsula Borough

J BOOTH RECREATIONAL SUB HM0750037  
 J BOOTH RECREATIONAL SUB ERICKSON ADDN HM2004004  
 J BOOTH RECREATIONAL SUB CRUTHERS ADDN HM2017023

Note- Assessor's block Numbers Shown in Ellipses  
 Assessor's Parcel Numbers Shown in Circles

This map is prepared for Kenai Peninsula Borough Assessing Dept. use only and is not intended for conveyance nor is it a survey.