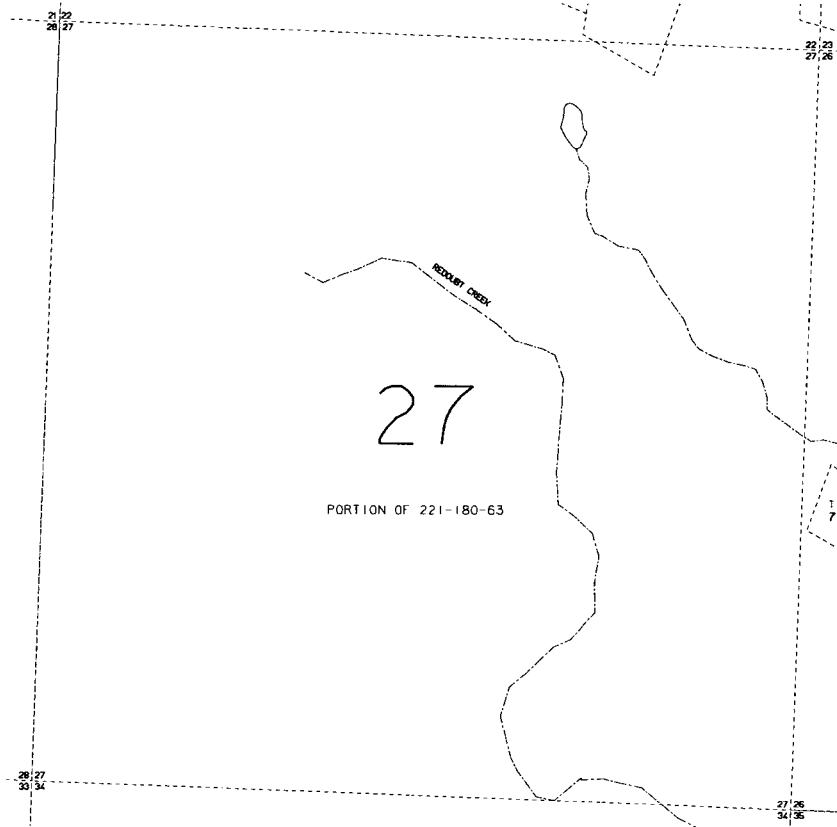


SEC. 27, T4N, R18W, SEWARD MERIDIAN

221-186

(181)



(180)

(185)

27

PORTION OF 221-180-63



DATE: JAN. 26, 1994

FOR 1994 ASSESSMENT ROLL		
DELETE	ADD	REVISED
TO		
1		

(187)

NOTE - Assessor's Block Numbers Shown in Ellipses
Assessor's Parcel Numbers Shown in Circles

Assessor's Map
Kenai Peninsula Borough

THIS MAP IS PREPARED
FOR KENAI PENINSULA
BOROUGH ASSESSING DEPT.
USE ONLY AND IS NOT
INTENDED FOR ANY
OTHER USE OR REPRESENTATION