

S 1/16

5

POR. SEC. 15 & 22, T5N, R10W, SEWARD MERIDIAN

058-121

BIRCH RD.

Assessor's Map

058-122

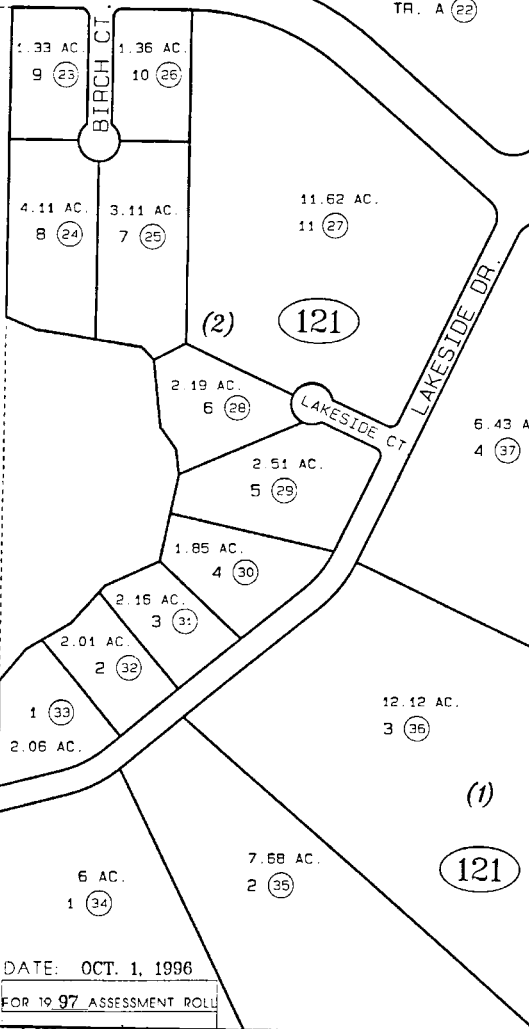
Kenai Peninsula Borough

THIS MAP IS PREPARED FOR KENAI PENINSULA BOROUGH ASSESSING DEPT USE ONLY AND IS NOT INTENDED FOR ANY OTHER USE OR REPRESENTATION

- PAVILION PART ONE KN001787 (PARCELS 05812116-21, 05812201-08)
- PAVILION PART TWO KN760015 (PARCELS 05812101-03,06-09,12)
- GIBBONS KN780002 (PARCELS 05812122-37)
- PAVILION PART 2 AMENDED KN840141 (PARCELS 05812138-46,49-54,05812219-26)
- PAVILION PART 3 AMENDED KN840142 (PARCELS 05812157,58)
- PAVILION PART 4 KN840315 (PARCELS 05812227,28)
- PAVILION PART 5 KN950065 (PARCELS 05812159-61)
- PAVILION KATAIVA ADDN. KN960045 (PARCELS 05812162-63)

GIBBONS SUBDIVISION

3



DENISE LAKE DR.

LAKESIDE DR.

MARTHA CIR.

PAVILION DR.

DEBBIE CIR.

KATAIVA ADDN.

PAVILION SUBD.

MACKEY LAKE RD.

CONTINENTAL WAY

NATIONAL AVE.

NATIONAL AVE.

DATE: OCT. 1, 1996 FOR 1997 ASSESSMENT ROLL



CS 1746 TO 05812143 THRU 05812162 05812145 05812163

3

1/4 COR.

25

NOTE - Assessor's Block Numbers Shown In Ellipses Assessor's Parcel Numbers Shown In Circles

27

174