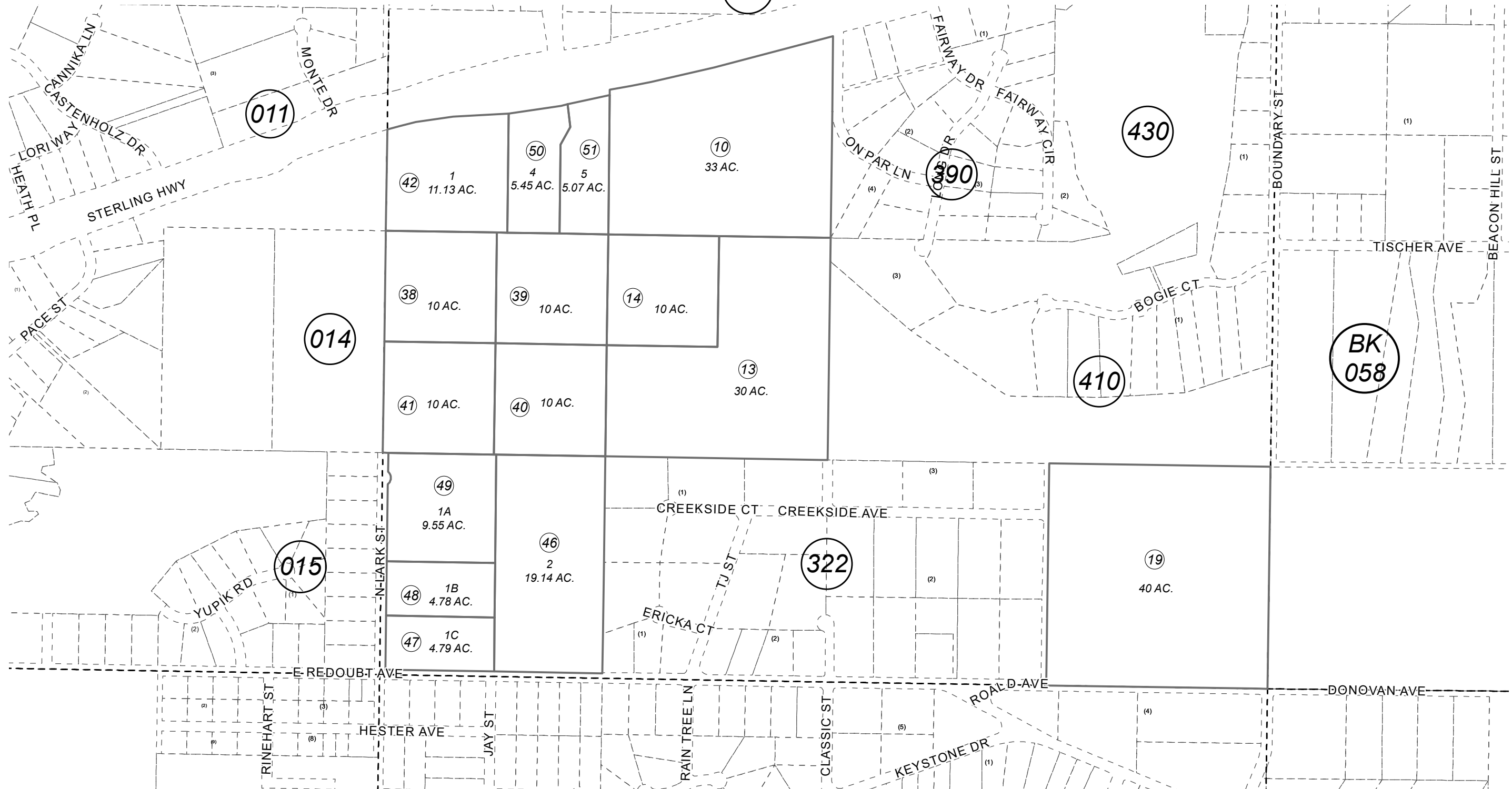


POR. SEC. 27, T05N, R10W, S.M.

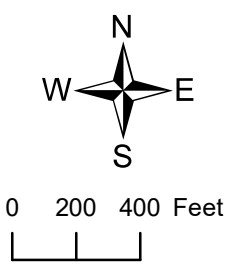
321

059-320



JUNE 16, 2023

For 2024 assessment roll		
Delete	Add	Revise
To		
43,44	50,51	



Assessor's Map  
Kenai Peninsula Borough

BK  
060

HEATH SUB NO 3 KN0830181  
 SINGING MEADOWS SUB KN0830243  
 HEATH SUB NO 4 KN2006097  
 SINGING MEADOWS SUB WEBBER ADDN KN2019044  
 HEATH SUB NO 5 KN2023011

This map is prepared for Kenai Peninsula Borough Assessing Dept. use only and is not intended for conveyance nor is it a survey.  
 Note- Assessor's block Numbers Shown in Elipses  
 Assessor's Parcel Numbers Shown in Circles