

N1/2 OF NW1/4 SEC. 27, T05N, R10W, S.M.

BK
058

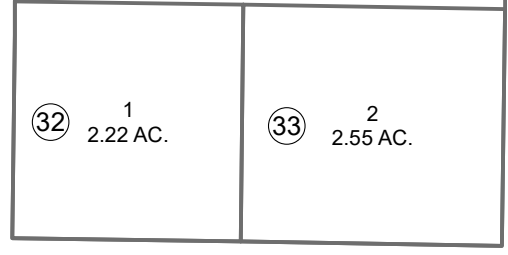
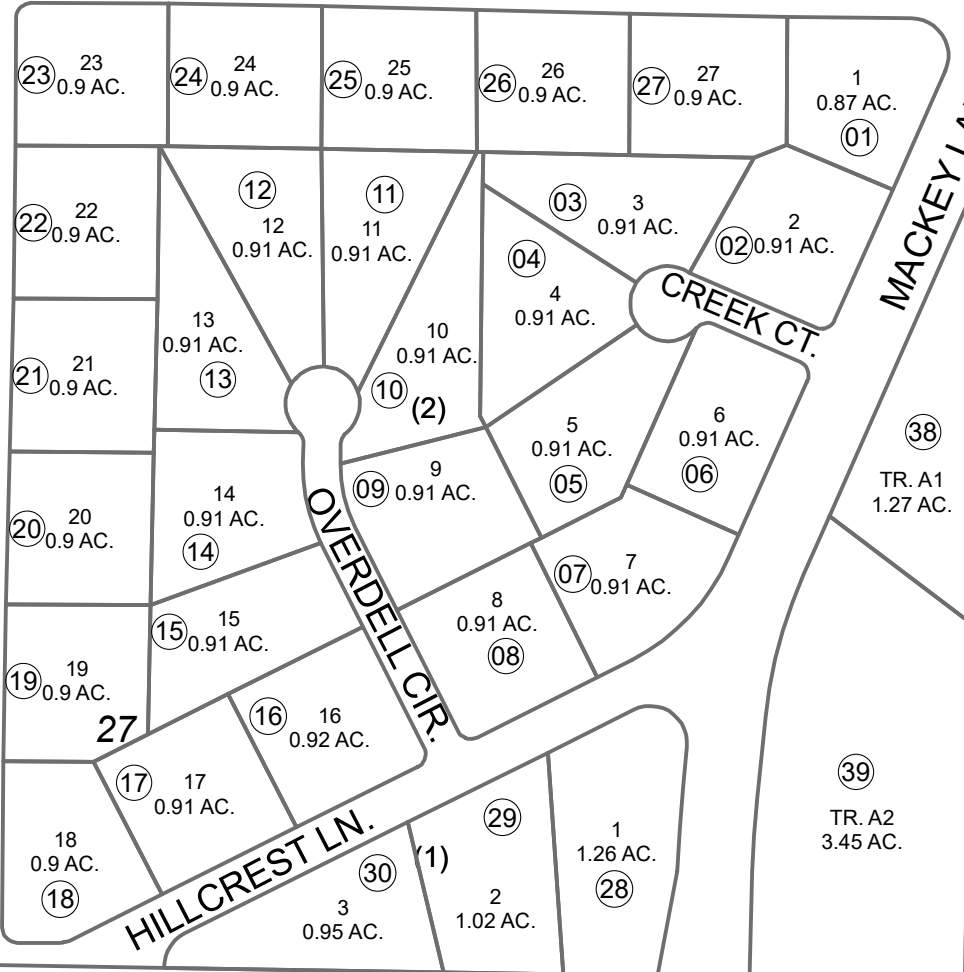
059-321

21

22

RIGGS AVE.

RIGGS AVE.



BK
057

28

323

34
34.12 AC.

39
TR. A2
3.45 AC.

36
1.36 AC.

37
1.20 AC.

320

STERLING HWY

MONTE DR.

JULY 26, 2023



0 100 200 Feet

For 2024 assessment roll		
Delete	Add	Revise
To		
31	38,39	

Assessor's Map
Kenai Peninsula Borough

SOLDOTNA CREEK HILLS SUB KN0830142
SOLDOTNA CREEK HILLS SUB MARTIN ADDN KN2023028

This map is prepared for Kenai Peninsula Borough Assessing Dept. use only and is not intended for conveyance nor is it a survey.
Note- Assessor's block Numbers Shown in Elipses
Assessor's Parcel Numbers Shown in Circles