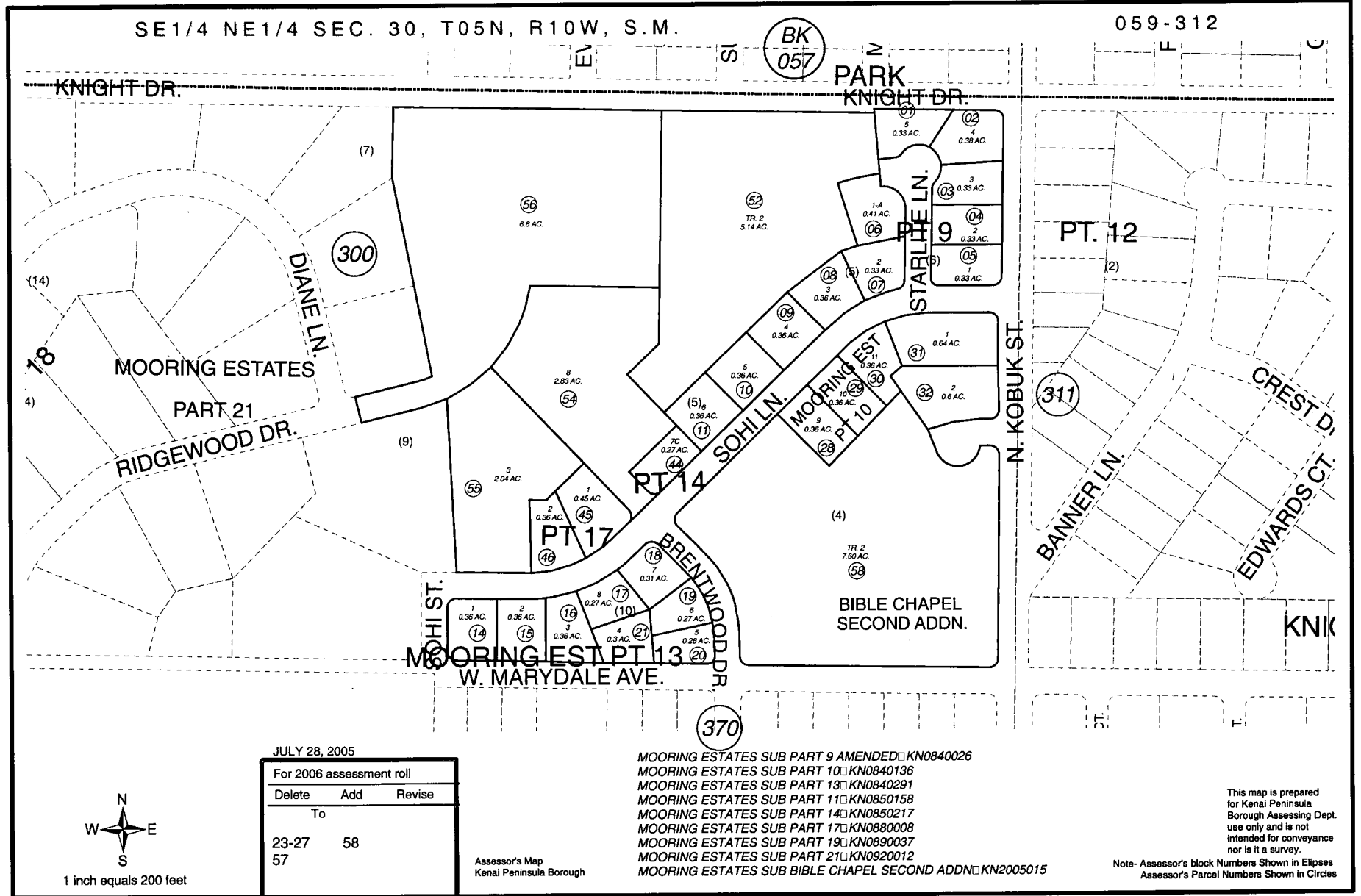


SE1/4 NE1/4 SEC. 30, T05N, R10W, S.M.

059-312



JULY 28, 2005

For 2006 assessment roll

Delete	Add	Revise
	To	
23-27	58	
57		

Assessor's Map
Kenai Peninsula Borough

MOORING ESTATES SUB PART 9 AMENDED □ KN0840026
 MOORING ESTATES SUB PART 10 □ KN0840136
 MOORING ESTATES SUB PART 13 □ KN0840291
 MOORING ESTATES SUB PART 11 □ KN0850158
 MOORING ESTATES SUB PART 14 □ KN0850217
 MOORING ESTATES SUB PART 17 □ KN0880008
 MOORING ESTATES SUB PART 19 □ KN0890037
 MOORING ESTATES SUB PART 21 □ KN0920012
 MOORING ESTATES SUB BIBLE CHAPEL SECOND ADDN □ KN2005015

This map is prepared for Kenai Peninsula Borough Assessing Dept. use only and is not intended for conveyance nor is it a survey.

Note- Assessor's block Numbers Shown in Ellipses
Assessor's Parcel Numbers Shown in Circles



1 inch equals 200 feet