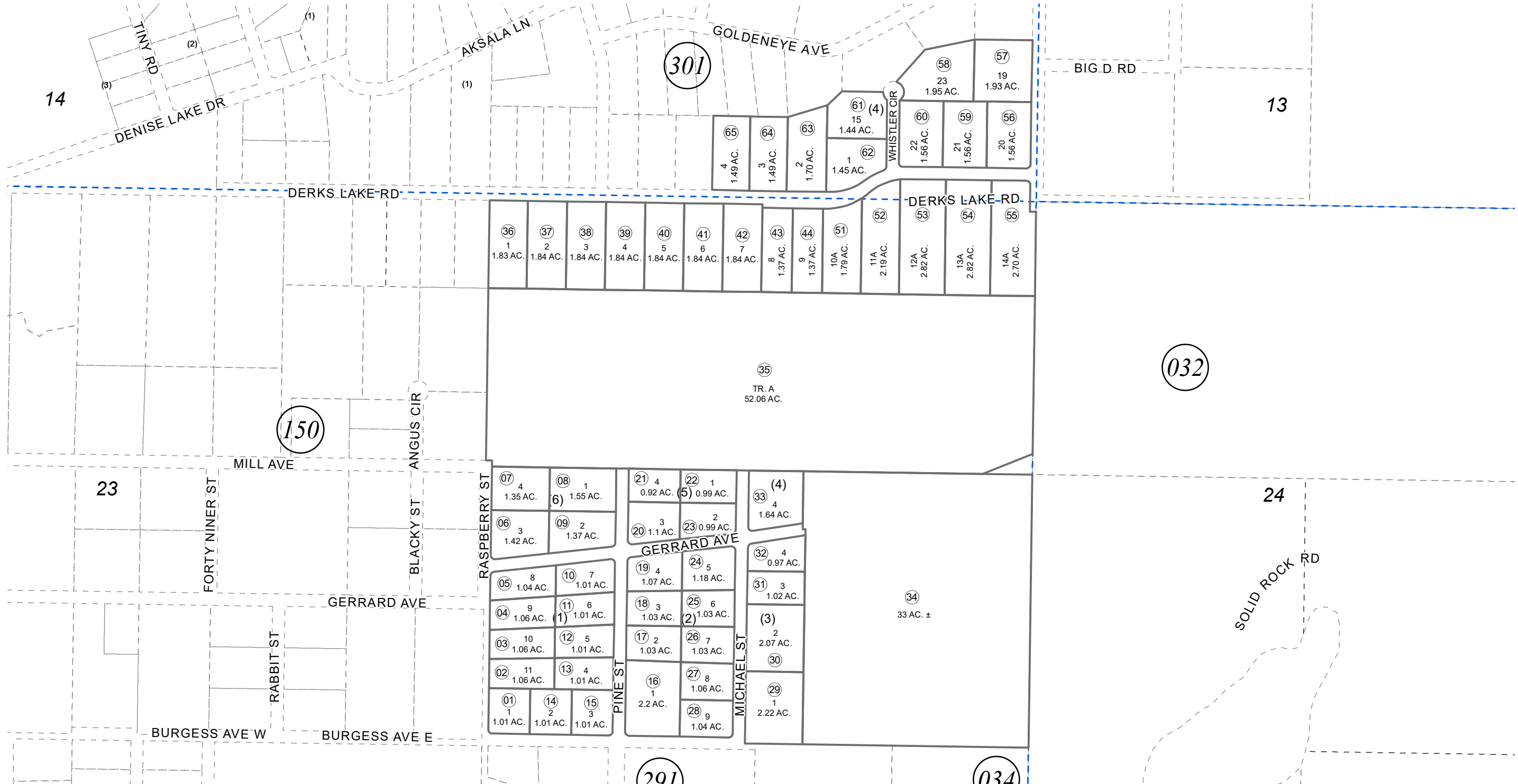
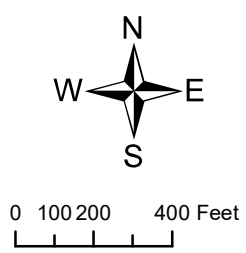


S 1/2 NE 1/4 SEC. 23, T05N, R10W, S.M.

058-320



SEPTEMBER 19, 2022



For 2023 assessment roll		
Delete	Add	Revise
To		
30172,		
32045-50	51-65	

Assessor's Map
Kenai Peninsula Borough

ROBINETTE SUB NO 2 KN0810166
TATUM SUB KN2021015
TATUM DENISE SUB KN2022043

This map is prepared for Kenai Peninsula Borough Assessing Dept. use only and is not intended for conveyance nor is it a survey.
Note- Assessor's block Numbers Shown in Ellipses
Assessor's Parcel Numbers Shown in Circles