

POR. E1/2 SW1/4 SEC. 29, T05N, R10W, S.M.

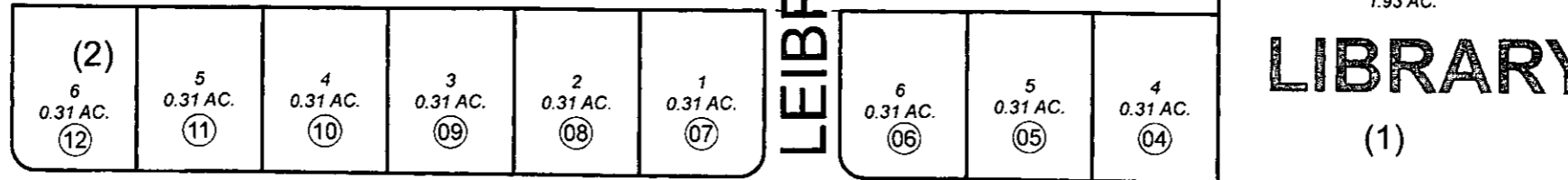
CENTRAL PENINSULA
MEDICAL CENTER
CONDOMINIUMS

059-270

400

100

LEIBROCK ST



LIBRARY

31

TR. 1A
1.93 AC.

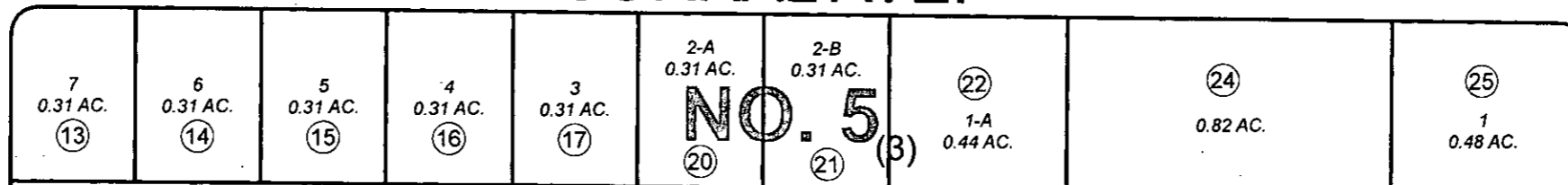
(1)

DAWN

380

GLOW

W. CORRAL AVE.



NO. 5

2-A
0.31 AC.

2-B
0.31 AC.

22

1-A
0.44 AC.

24
0.82 AC.

25
1
0.48 AC.

7
0.31 AC.
13

6
0.31 AC.
14

5
0.31 AC.
15

4
0.31 AC.
16

3
0.31 AC.
17

20

21

(3)

SUB

420

NO. 7

32 TR. 4A1
2.27 AC.

VANN ADDN.
NO. 2

37

B2
0.9 AC.

36

B1
0.57 AC.

VANN
ADDN.

34

A
0.75 AC.

28

TR. 2A
3.18 AC.

26

TR. 1A-2
4.49 AC.

NO. 3

121

E. CORRAL
ADDN

130

W. PARK AVE.

290

DECEMBER 28, 2011

| For 2012 assessment roll | | |
|--------------------------|-------|--------|
| Delete | Add | Revise |
| To | | |
| 35 | 36,37 | |

Assessor's Map
Kenai Peninsula Borough

PARK SUB TRACT 1 KN0720044
PARKWOOD SUB NO 3 KN0840033
PARKWOOD SUB NO 5 KN0870073
PARKWOOD SUB NO 7 KN0910013
PARKWOOD SUB VANN ADDN KN2010025
PARKWOOD SUB VANN ADDN NO 2 KN2011086

This map is prepared
for Kenai Peninsula
Borough Assessing Dept.
use only and is not
intended for conveyance
nor is it a survey.

Note- Assessor's block Numbers Shown in Ellipses
Assessor's Parcel Numbers Shown in Circles



0 50 100 200 Feet