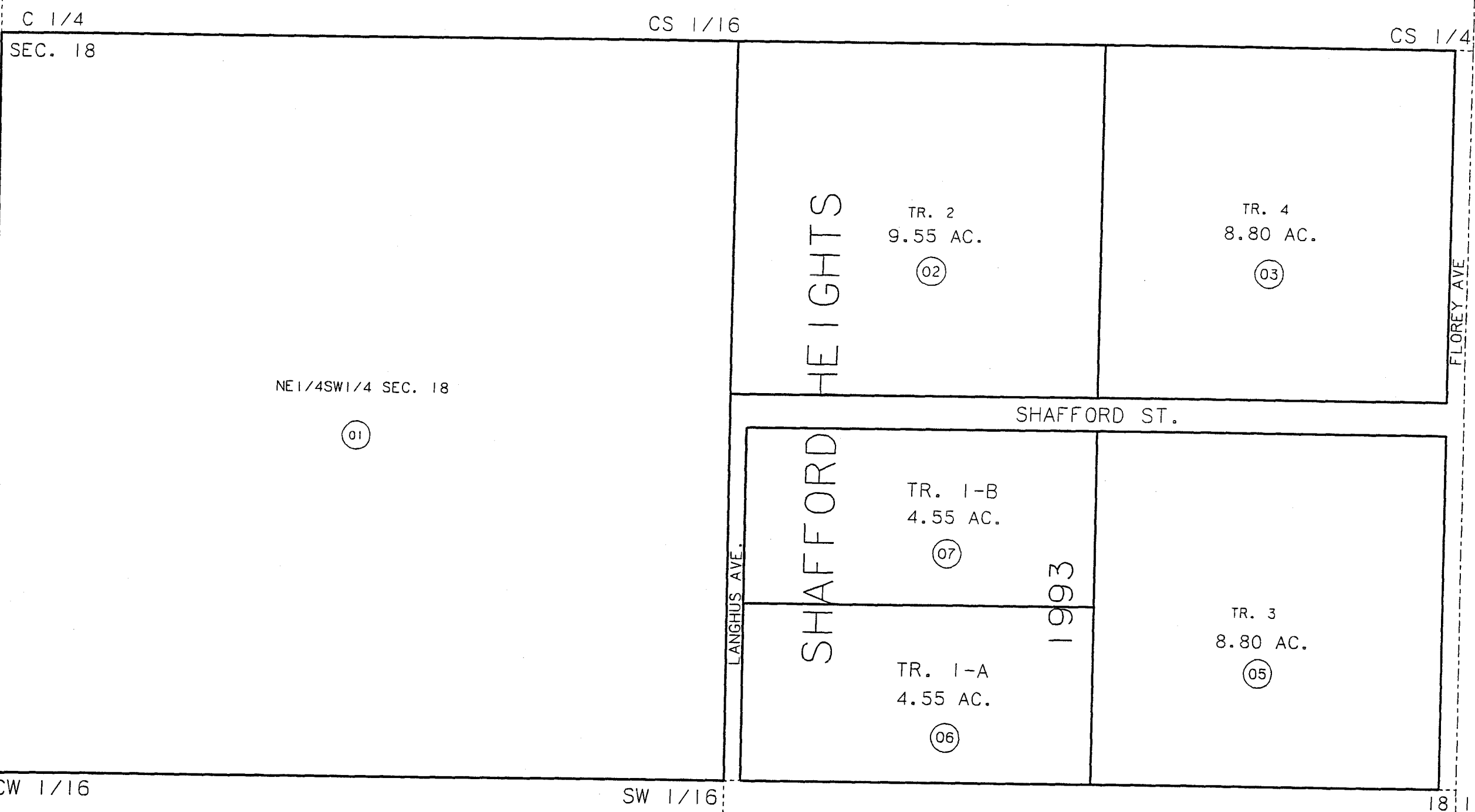


E1/2 SW1/4, SECTION 18, T5S, ~~R11W~~ R11W, SEWARD MERIDIAN

172-280

8



8

8

8

DATE: JAN. 24, 1994

FOR 19 94 ASSESSMENT ROLL		
DELETE	ADD	REVISED
TO		
4	6,7	

SHAFFORD HEIGHTS  
SHAFFORD HEIGHTS 1993

HM790001  
HM930063

NOTE - Assessor's Block Numbers Shown In Ellipses  
Assessor's Parcel Numbers Shown In Circles

Assessor's Map  
Kenai Peninsula Borough

THIS MAP IS PREPARED  
FOR KENAI PENINSULA  
BOROUGH ASSESSING DEPT.  
USE ONLY AND IS NOT  
INTENDED FOR ANY  
OTHER USE OR REPRESENTATION

