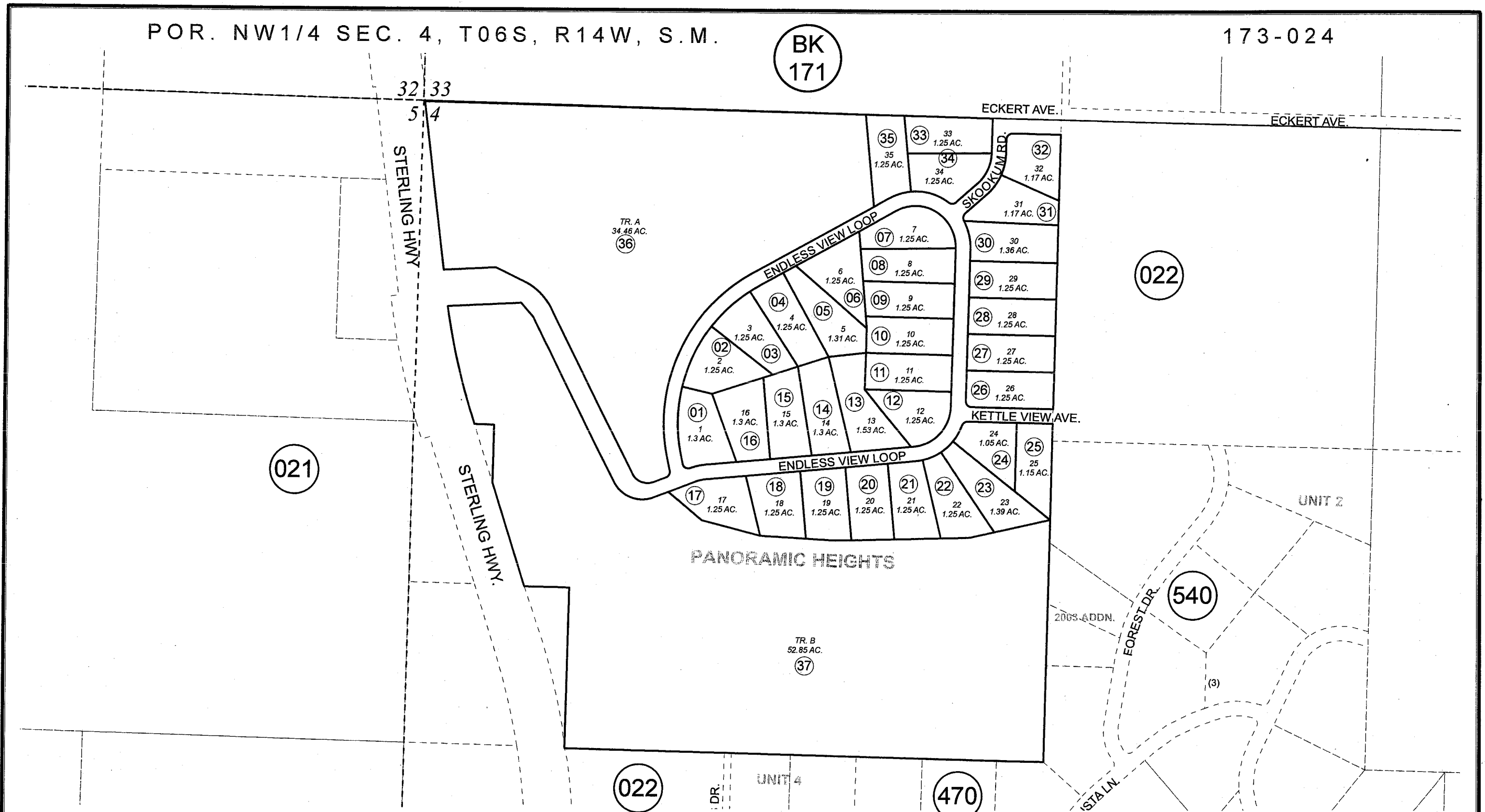


POR. NW1/4 SEC. 4, T06S, R14W, S.M.

BK  
171

173-024



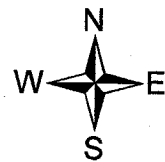
SEPTEMBER 12, 2007

For 2008 assessment roll

Delete	Add	Revise
--------	-----	--------

To

NEW  
PAGE



Assessor's Map  
Kenai Peninsula Borough

PANORAMIC HEIGHTS SUB HM2007077

This map is prepared for Kenai Peninsula Borough Assessing Dept. use only and is not intended for conveyance nor is it a survey.

Note- Assessor's block Numbers Shown in Ellipses  
Assessor's Parcel Numbers Shown in Circles