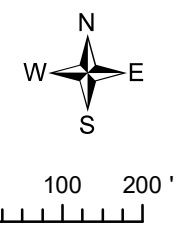
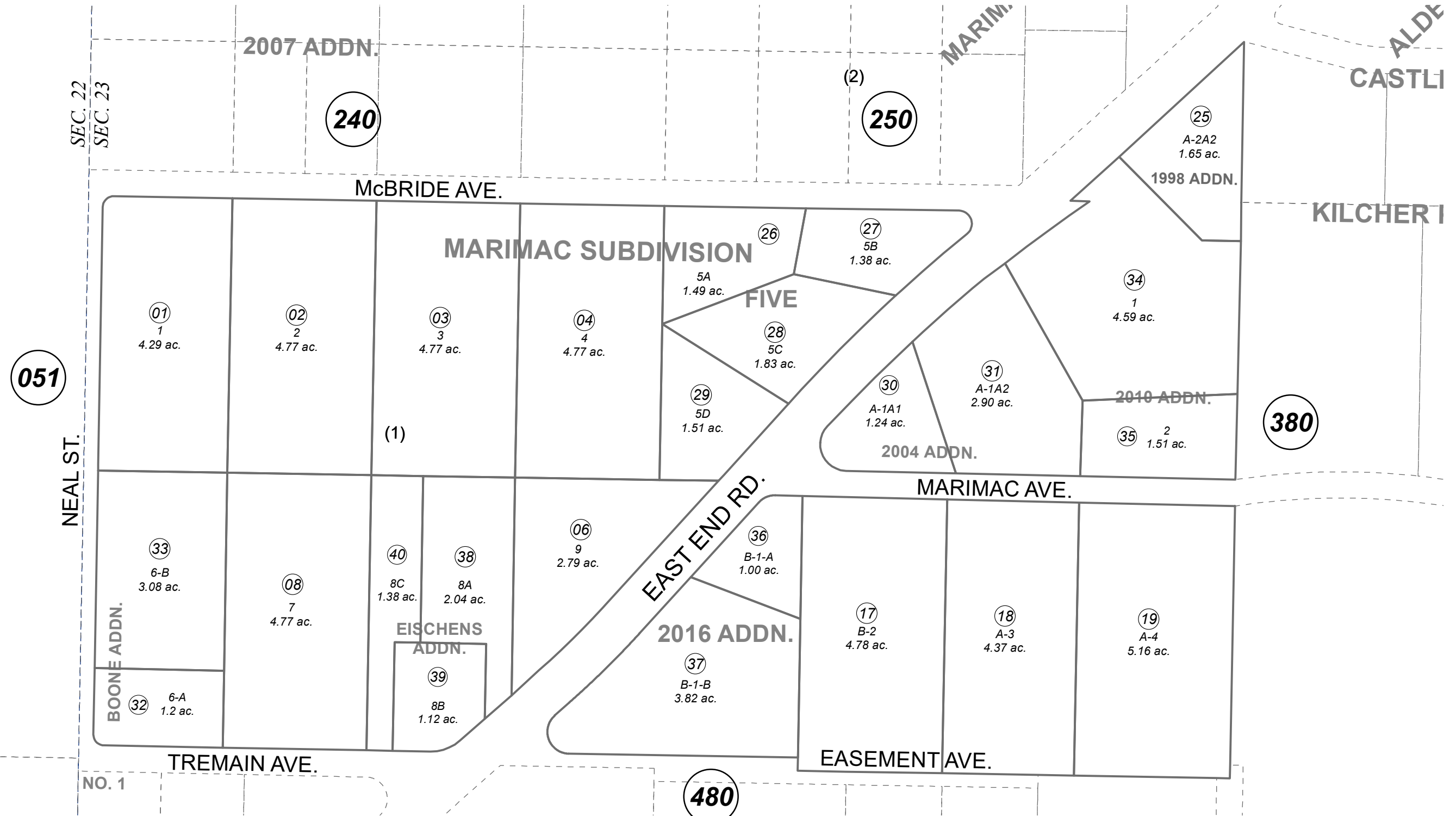


N1/2 SW1/4 SEC. 23, T05S, R12W, S.M.

172-170



SEPTEMBER 7, 2021

For 2022 assessment roll		
Delete	Add	Revise
	To	
07	38-40	

Assessor's Map
Kenai Peninsula Borough

- MARIMAC SUB □ HM0760036
- MARIMAC SUB REPLAT BLK 2 & 3 □ HM0780116
- MARIMAC FOUR SUB □ HM0870032
- MARIMAC FOUR 1998 ADDN □ HM0980072
- MARIMAC FIVE SUB □ HM2003067
- MARIMAC FOUR SUB 2004 ADDN HM2004068
- MARIMAC SUB BOONE ADDN HM2008054
- MARIMAC FOUR SUB 2010 ADDN HM2010056
- MARIMAC SUB 2016 ADDN HM2016031
- MARIMAC SUB EISCHENS ADDN HM2021029

This map is prepared for Kenai Peninsula Borough Assessing Dept. use only and is not intended for conveyance nor is it a survey.

Note- Assessor's block Numbers Shown in Elipses
Assessor's Parcel Numbers Shown in Circles