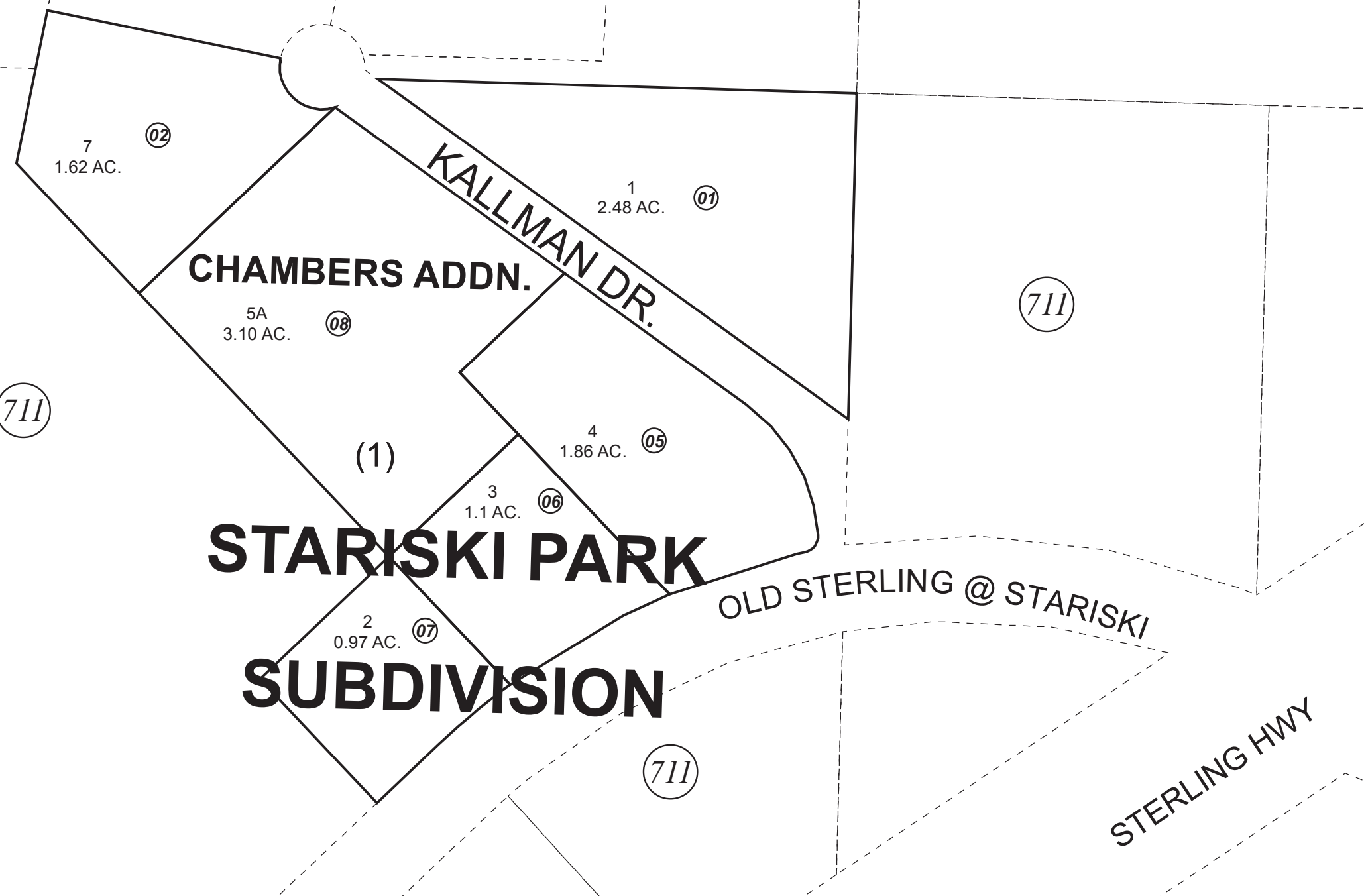


POR. SW1/4 NE1/4 SEC. 11, T04S, R15W, S.M.

165-710

711

711



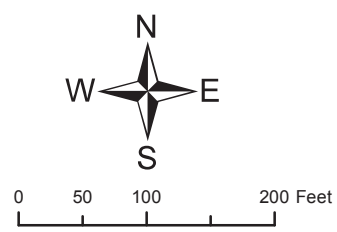
711

711

711

JUNE 5, 2018

For 2019 assessment roll		
Delete	Add	Revise
To		
03,04	08	



Assessor's Map  
Kenai Peninsula Borough

HM0740076 STARISKI PARK SUB  
 HM0741067 STARISKI PARK SUB 1974 ADDN LOT 1 BLK 2  
 HM0810046 STARISKI PARK SUB 1980 ADDN  
 HM2018012 STARISKI PARK SUB CHAMBERS ADDN

This map is prepared for Kenai Peninsula Borough Assessing Dept. use only and is not intended for conveyance nor is it a survey.

Note- Assessor's block Numbers Shown in Ellipses  
 Assessor's Parcel Numbers Shown in Circles