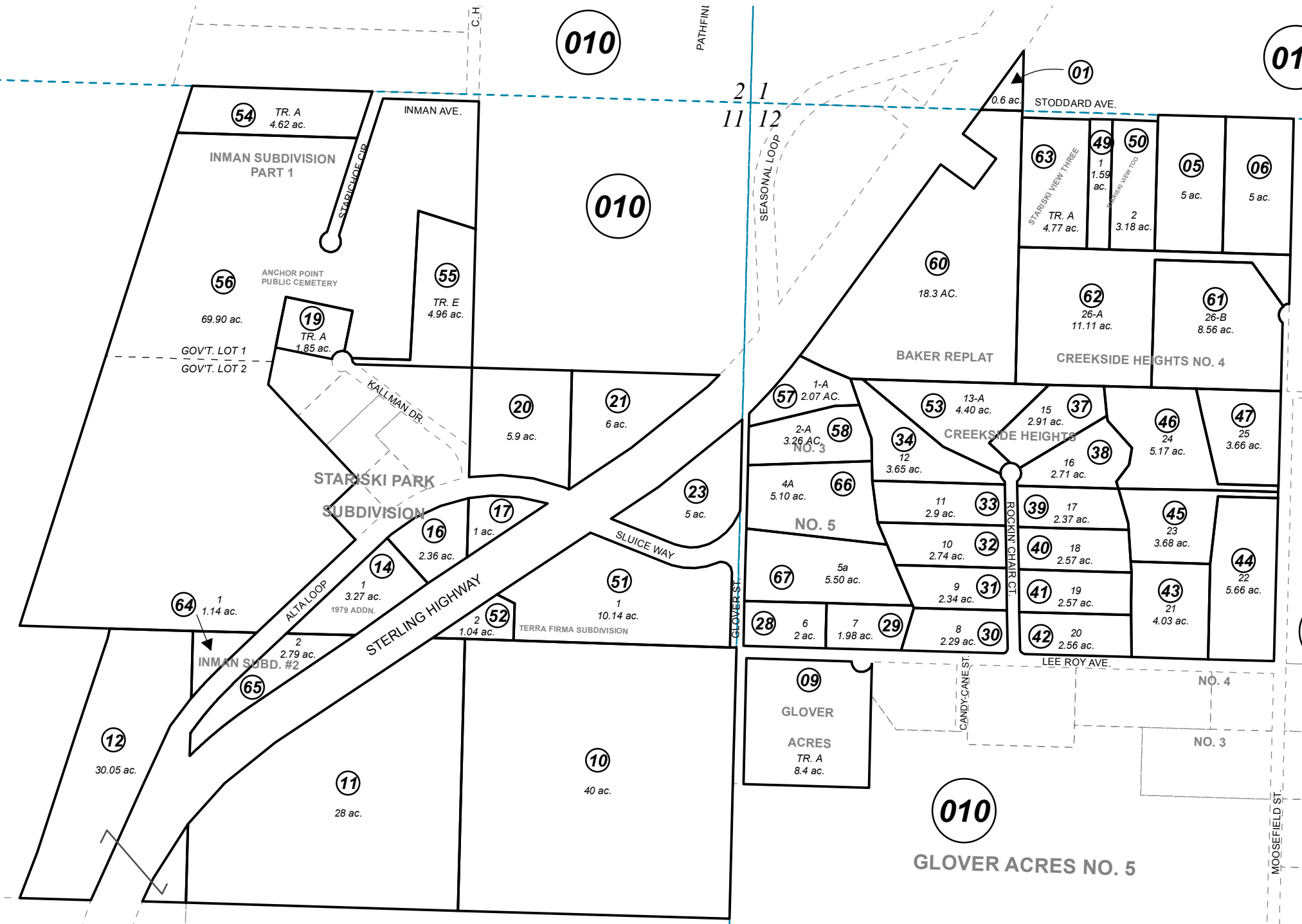


Cook Inlet



0 150 300 600 Feet

DECEMBER 22, 2014

For 2015 assessment roll		
Delete	Add	Revise
To		
26,27, 59	66,67	

Assessor's Map
Kenai Peninsula Borough

- ANCHOR POINT PUBLIC CEMETARY HM0721473
- GLOVER ACRES SUB HM0750007
- STARISKI VIEW SUB HM0790132
- STARISKI PARK SUB 1979 ADDN HM0790134
- STARISKI VIEW TOO HM0960033
- CREEKSIDE HEIGHTS AMENDED HM0980010
- TERRA FIRMA SUB HM2000066
- CREEKSIDE HEIGHTS BAKER REPLAT HM2001057
- INMAN SUB PART 1 HM2003017
- CREEKSIDE HEIGHTS SUB NO 3 HM2005029
- CREEKSIDE HEIGHTS SUB NO 4 HM2005101
- STARISKI VIEW THREE HM2009045
- INMAN SUB #2 HM2012021
- CREEKSIDE HEIGHTS NO 5 HM2014038

Note- Assessor's block Numbers Shown in Elipses
Assessor's Parcel Numbers Shown in Circles

This map is prepared
for Kenai Peninsula
Borough Assessing Dept.
use only and is not
intended for conveyance
nor is it a survey.