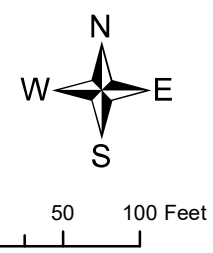
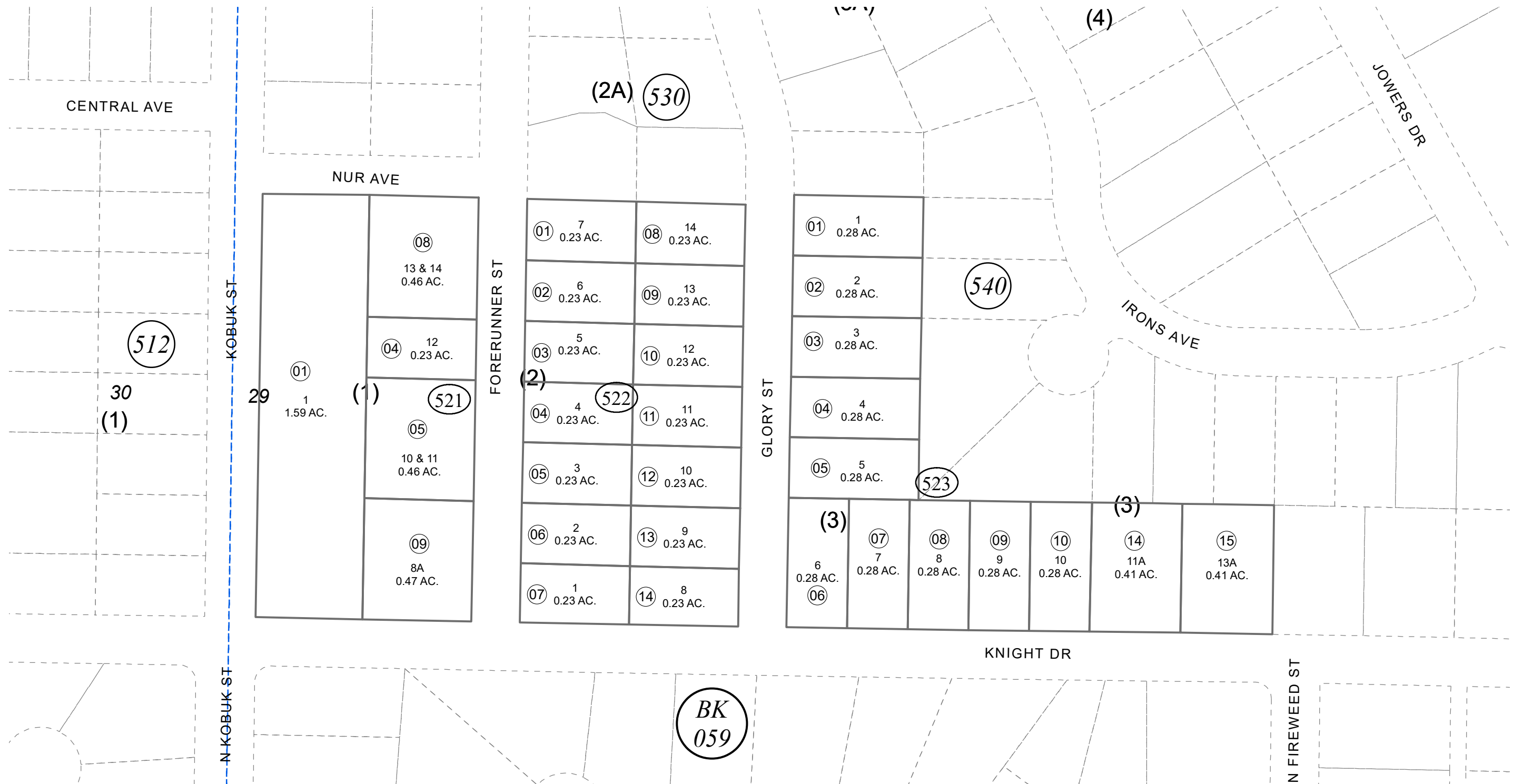


POR. SEC. 29, T05N, R10W, S.M.

057-520



JANUARY 5, 2024

For 2024 assessment roll		
Delete	Add	Revise
To		
521-06, 521-07	521-09	

Assessor's Map
Kenai Peninsula Borough

IRONS SUB KN0001227
 IRONS SUB LOTS 1-13 BLK 3 & 6 KN0001516
 IRONS SUB LOT 1 BLK 1 KN0730041
 IRONS SUB REPLAT OF LOTS 11-13 BLK 3 KN0750008
 IRONS SUB COVEY REPLAT KN2023064

This map is prepared for Kenai Peninsula Borough Assessing Dept. use only and is not intended for conveyance nor is it a survey.
 Note- Assessor's block Numbers Shown in Ellipses
 Assessor's Parcel Numbers Shown in Circles