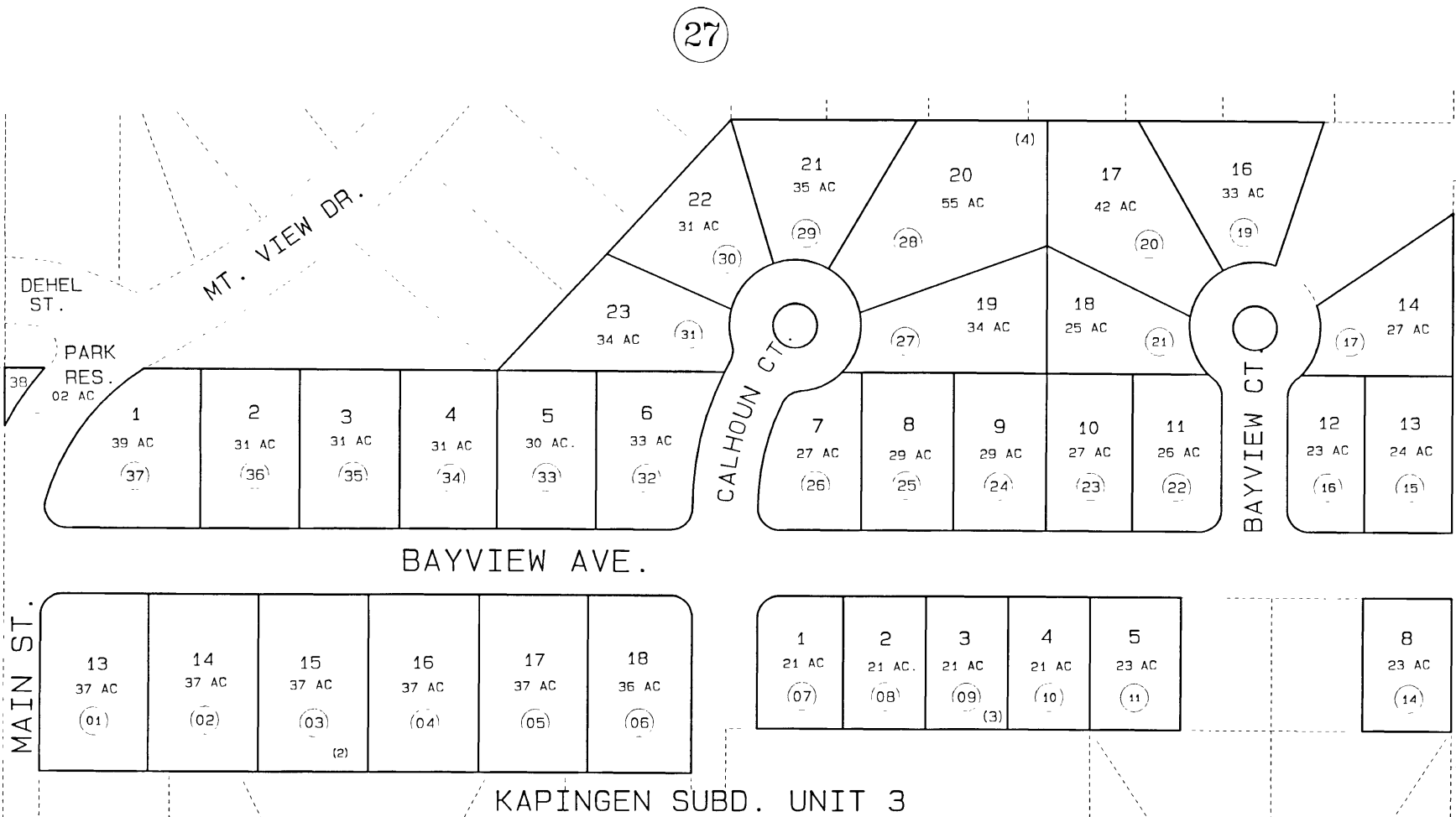
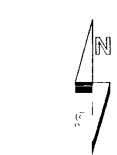


PORTION SECTION 17, T6S, R13W, SEWARD MERIDIAN

177-260



BK 175



DATE JAN 26, 1995

FOR 1995 ASSESSMENT ROLL		
DELETE	ADD	REVISED
TO		
18		

Assessor's Map
Kenai Peninsula Borough

KAPINGEN SUBD UNIT 3 IIM760026

THIS MAP IS PREPARED FOR KENAI PENINSULA BOROUGH ASSESSING DEPT USE ONLY AND IS NOT INTENDED FOR ANY OTHER USE OR REPRESENTATION

NOTE - Assessor's Block Numbers Shown In Ellipses
Assessor's Parcel Numbers Shown In Circles