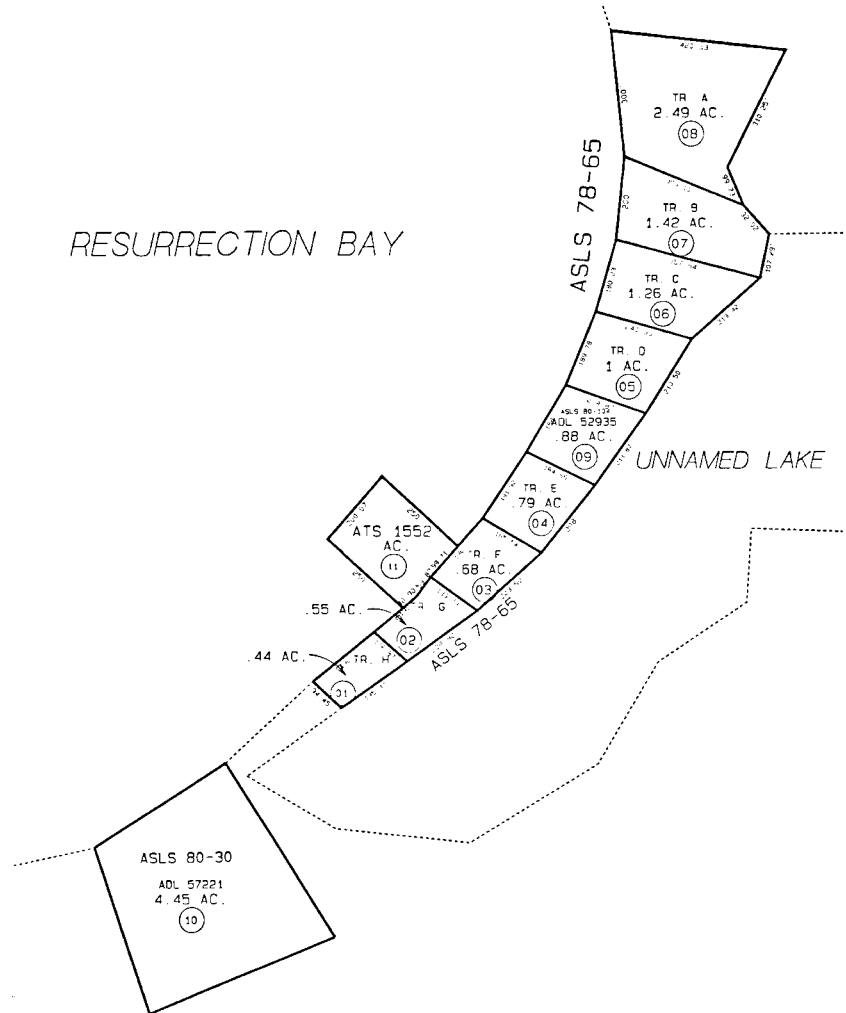


RESURRECTION BAY



014



DATE SEPT. 14, 1998		
FOR 19 99 ASSESSMENT ROLL		
DELETE	ADD	REVISED
TO		
11		

Assessor's Map
Kenai Peninsula Borough

SW790005 ALASKA STATE LAND SURVEY 78-65
SW800020 ALASKA STATE LAND SURVEY 80-104
SW980016 ALASKA TIDELAND SURVEY NO. 1552

THIS MAP IS PREPARED FOR KENAI PENINSULA BOROUGH ASSESSING DEPT. USE ONLY AND IS NOT INTENDED FOR ANY OTHER USE OR REPRESENTATION

NOTE - Assessor's Block Numbers Shown In Ellipses
Assessor's Parcel Numbers Shown In Circles