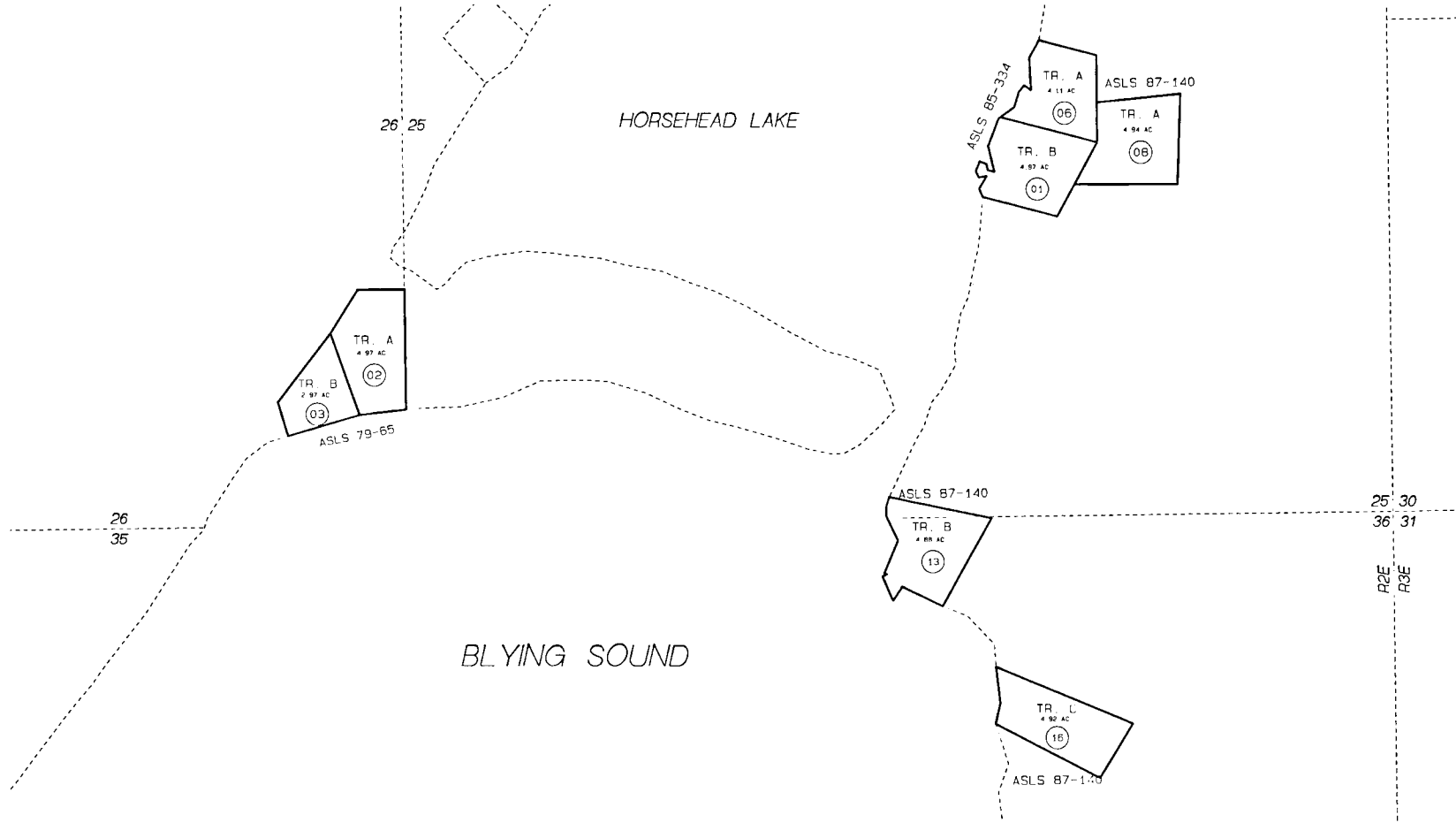


317

313

318

314



DATE: FEB. 6, 1997

FOR 19 97 ASSESSMENT ROLL		
DELETE	ADD	REVISED
TO		
11,12,15		

Assessor's Map  
Kenai Peninsula Borough

ALASKA STATE LAND SURVEY 79-065 SW800007  
 ALASKA STATE LAND SURVEY 80-062 SW800009  
 ALASKA STATE LAND SURVEY 85-334 SW880009  
 ALASKA STATE LAND SURVEY 87-140 SW890026

THIS MAP IS PREPARED FOR KENAI PENINSULA BOROUGH ASSESSING DEPT. USE ONLY AND IS NOT INTENDED FOR ANY OTHER USE OR REPRESENTATION

NOTE - Assessor's Block Numbers Shown In Ellipses  
Assessor's Parcel Numbers Shown In Circles