

700

110

100

370

390

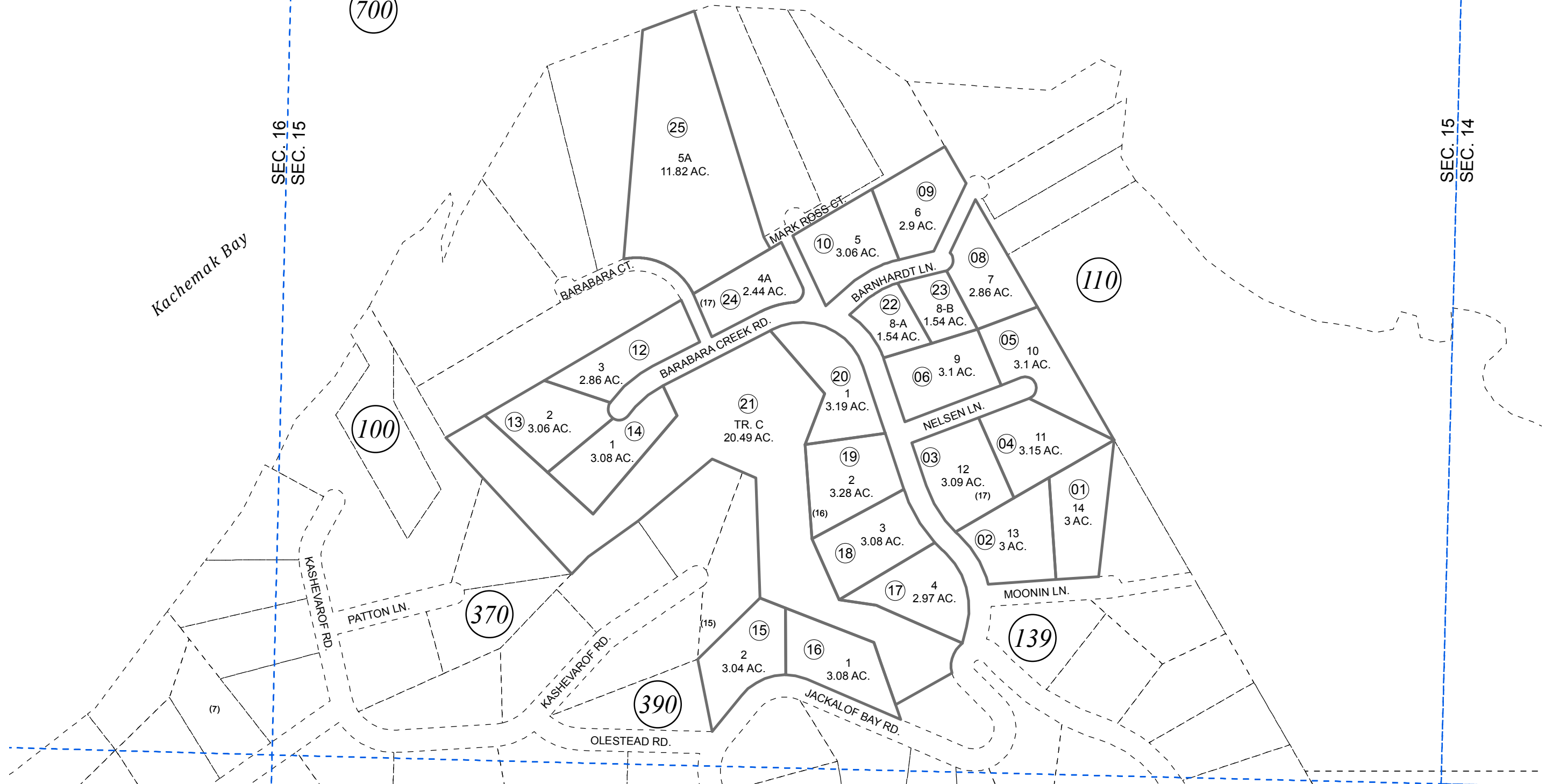
139

700

Kachemak Bay

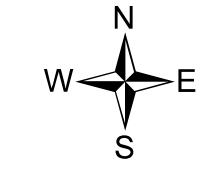
SEC. 16
SEC. 15

SEC. 15
SEC. 14



JANUARY 16, 2019

For 2019 assessment roll		
Delete	Add	Revise
To		
24,25		



0 100 200 400 Feet

Assessor's Map
Kenai Peninsula Borough

BARABARA HEIGHTS SUB SL0790006
BARABARA HEIGHTS SUB POLLACK ADDN SL2018007

Note- Assessor's block Numbers Shown in Elipses
Assessor's Parcel Numbers Shown in Circles

This map is prepared
for Kenai Peninsula
Borough Assessing Dept.
use only and is not
intended for conveyance
nor is it a survey.