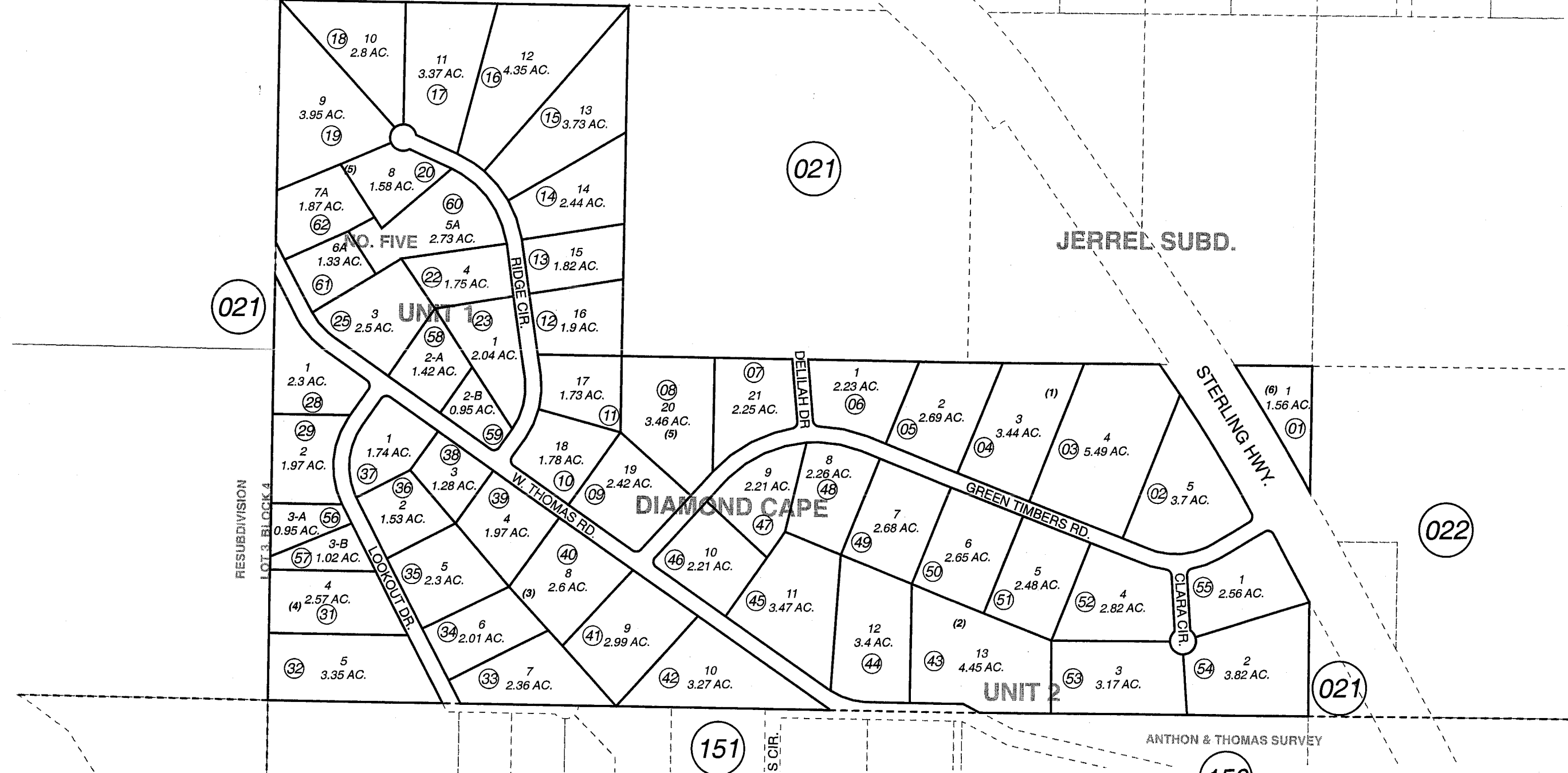


POR. S1/2 SEC. 9, T06S, R14W, S.M.

173-630

IK

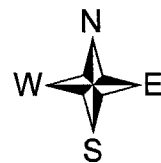


NOVEMBER 15, 2006

For 2007 assessment roll		
Delete	Add	Revise
To		
21,26,27	60-62	

Assessor's Map
Kenai Peninsula Borough

DIAMOND CAPE SUB UNIT 1 HM0770078
 DIAMOND CAPE SUB UNIT 2 HM0770079
 DIAMOND CAPE SUB UNIT 1 RESUB HM0840114
 DIAMOND CAPE UNIT THREE HM0990069
 DIAMOND CAPE SUB NO FIVE HM2006062



This map is prepared for Kenai Peninsula Borough Assessing Dept. use only and is not intended for conveyance nor is it a survey.

Note- Assessor's block Numbers Shown in Elipses
 Assessor's Parcel Numbers Shown in Circles