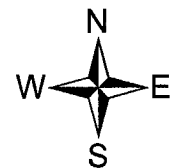
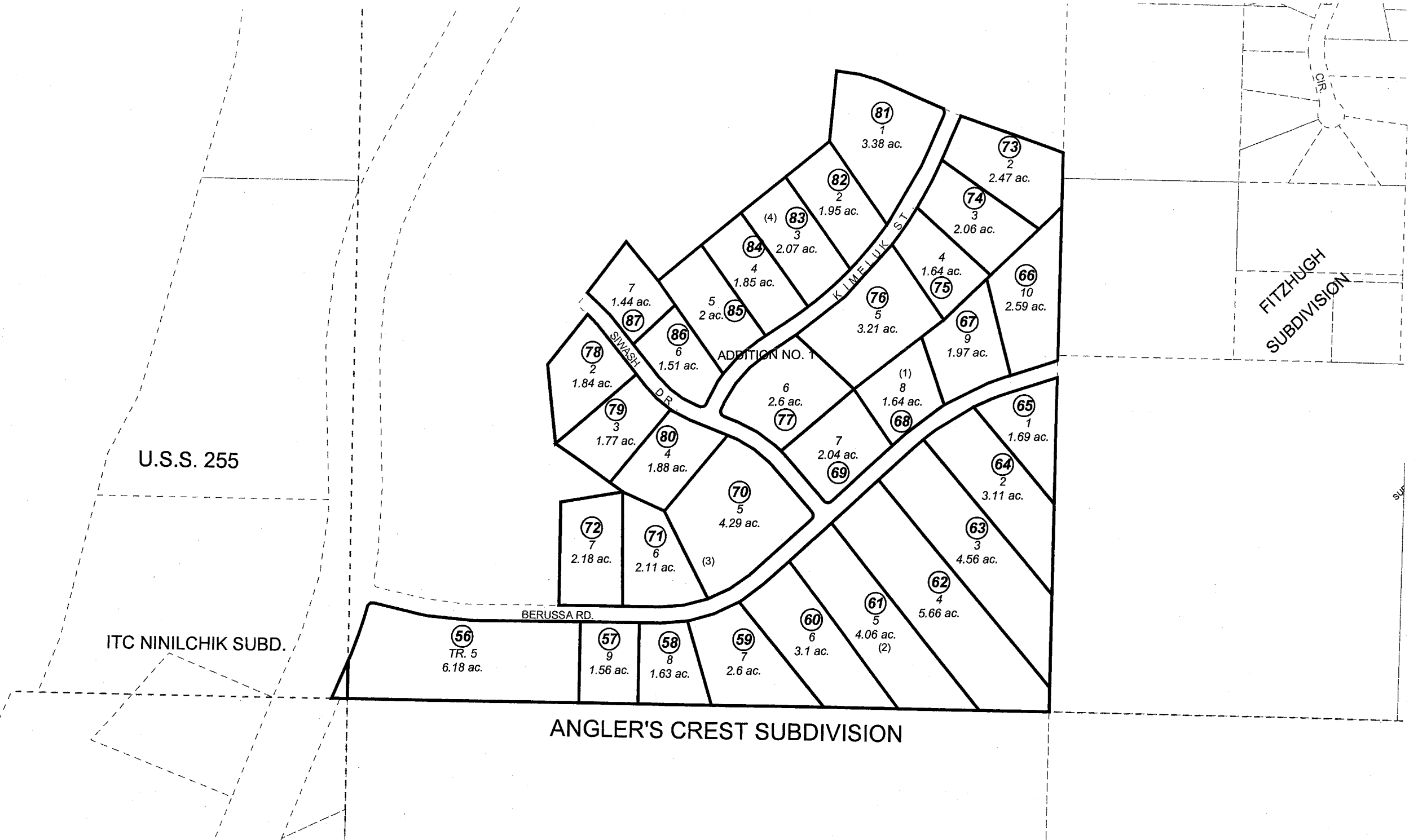


ANGLER'S CREST SUBD. DETAIL

159-010



DECEMBER 17, 2001

For 2002 assessment roll		
Delete	Add	Revise
To		
<b>NEW PAGE</b>		

Assessor's Map  
Kenai Peninsula Borough

This map is prepared for Kenai Peninsula Borough Assessing Dept. use only and is not intended for conveyance nor is it a survey.

Note- Assessor's block Numbers Shown in Ellipses  
Assessor's Parcel Numbers Shown in Circles