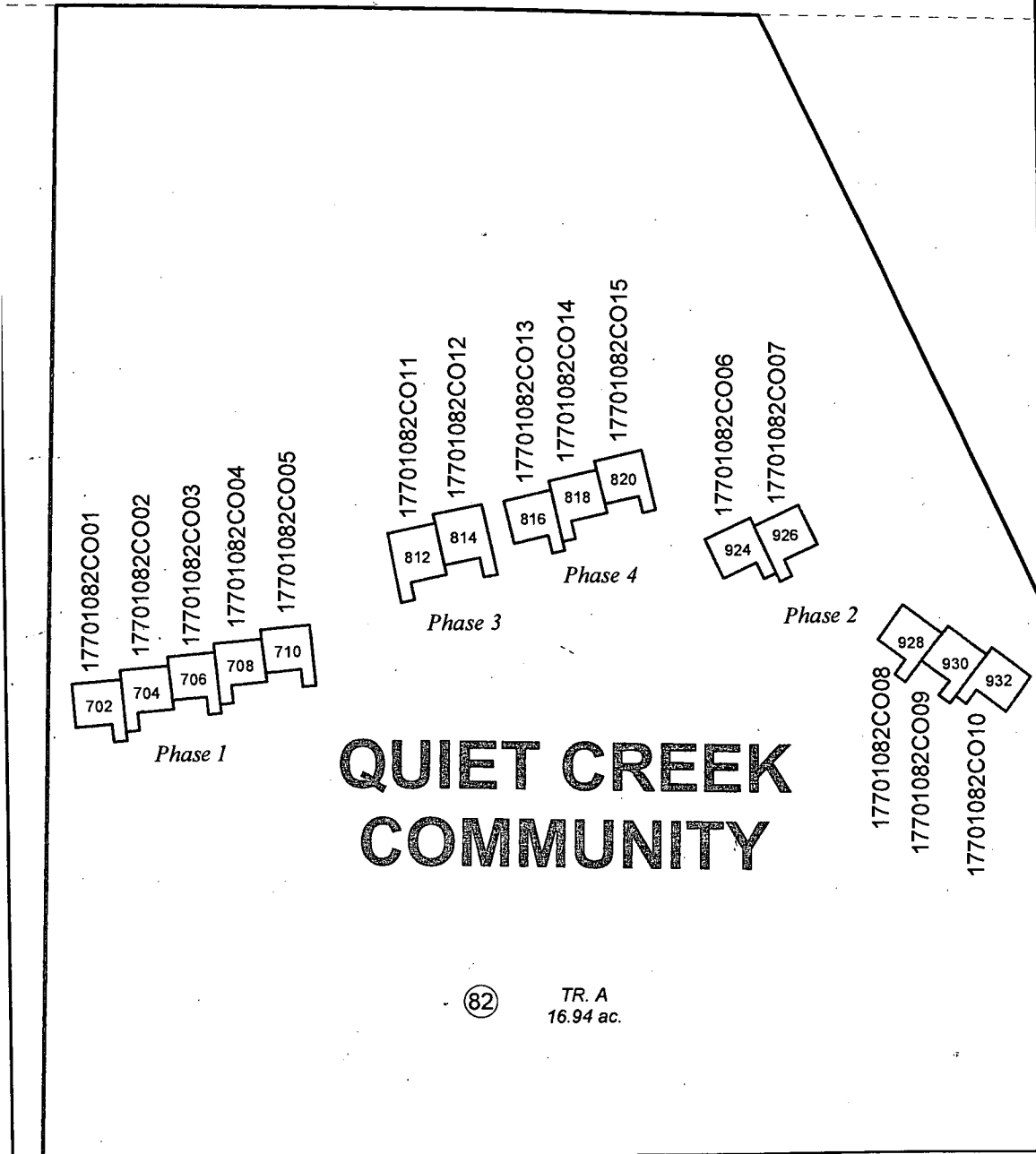
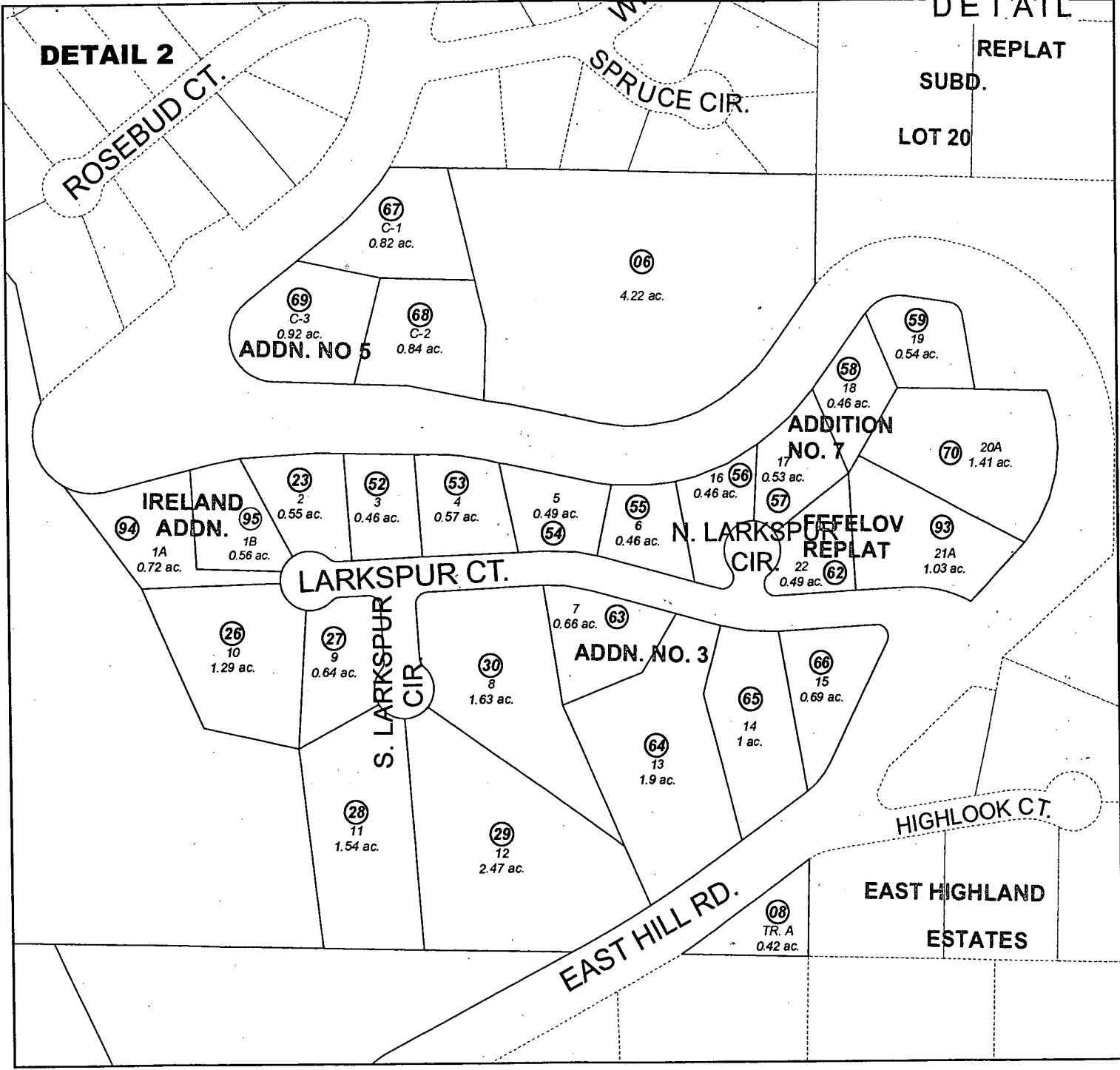


DETAIL 1



DETAIL 2



AUGUST 6, 2010

For 2011 assessment roll		
Delete	Add	Revise
To		
83-92, 010-82CO812, 010-82CO814, 010-82CO816, 010-82CO818, 010-82CO820		82 (ADDED CONDOMINIUM REFERENCE)

Assessor's Map
Kenai Peninsula Borough



This map is prepared for Kenai Peninsula Borough Assessing Dept. use only and is not intended for conveyance nor is it a survey.
Note- Assessor's block Numbers Shown in Ellipses
Assessor's Parcel Numbers Shown in Circles