

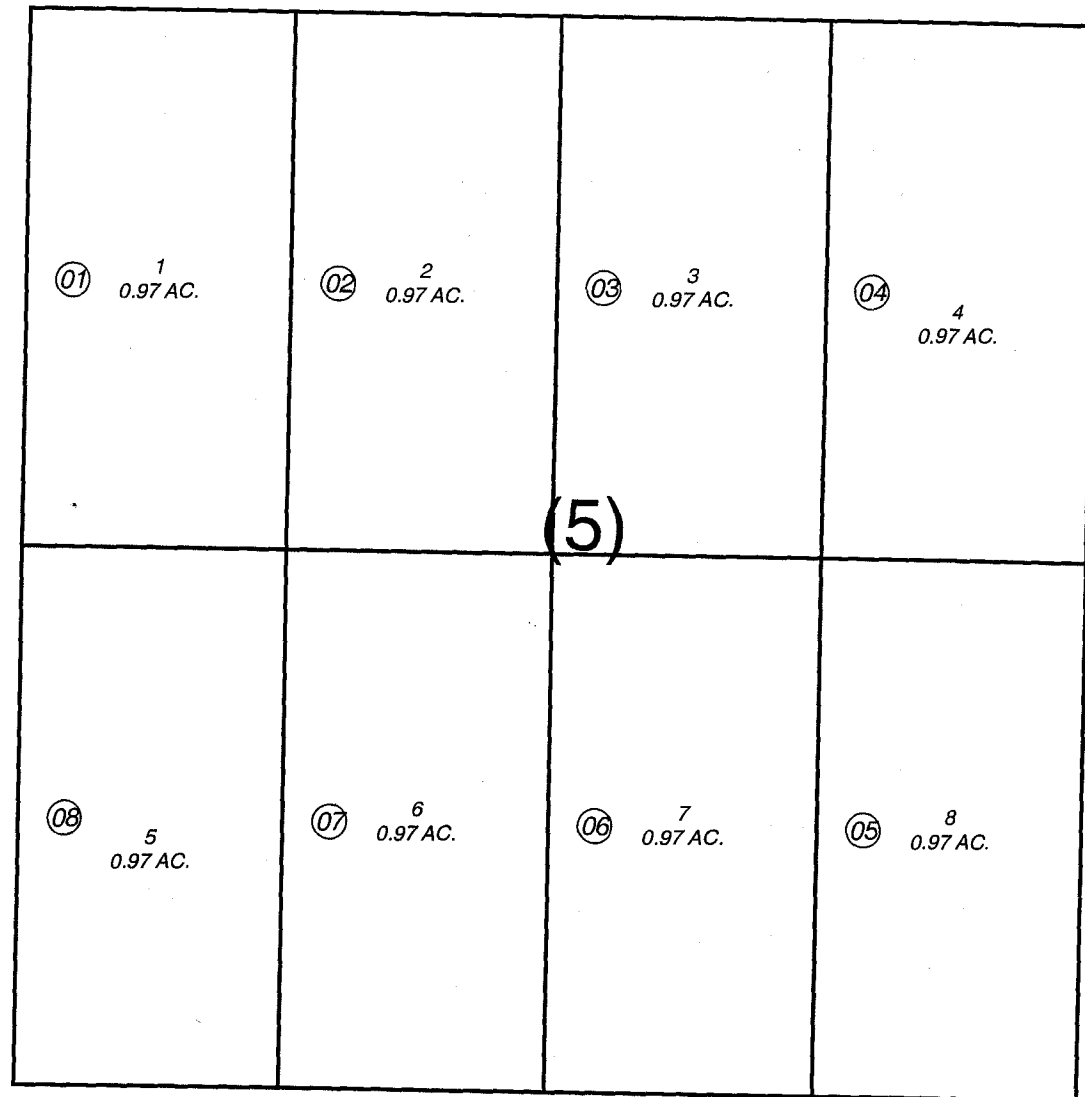
180

EQUESTRIAN AVE



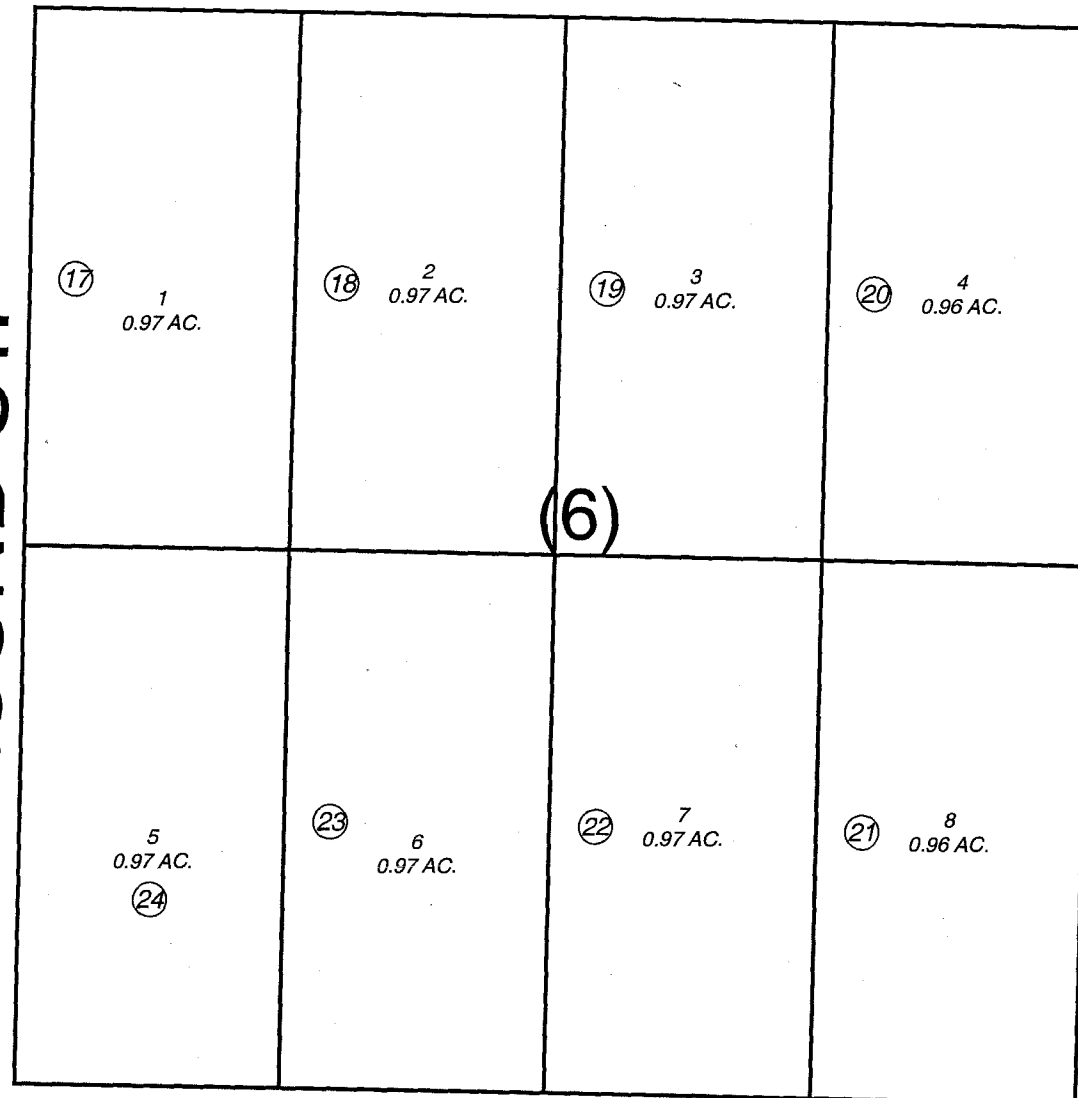
060

FIRST ST.



(5)

SECOND ST.



(6)

241

THIRD ST.

YRAGUI AVE

241



NOVEMBER 15, 2005

For 2006 assessment roll

Delete	Add	Revise
--------	-----	--------

To

9-16

25-32

Assessor's Map
Kenai Peninsula Borough

KALIFONSKY BEACH INDUSTRIAL PARK SUB KN0730023

This map is prepared for Kenai Peninsula Borough Assessing Dept. use only and is not intended for conveyance nor is it a survey.

Note- Assessor's block Numbers Shown in Elipses
Assessor's Parcel Numbers Shown in Circles