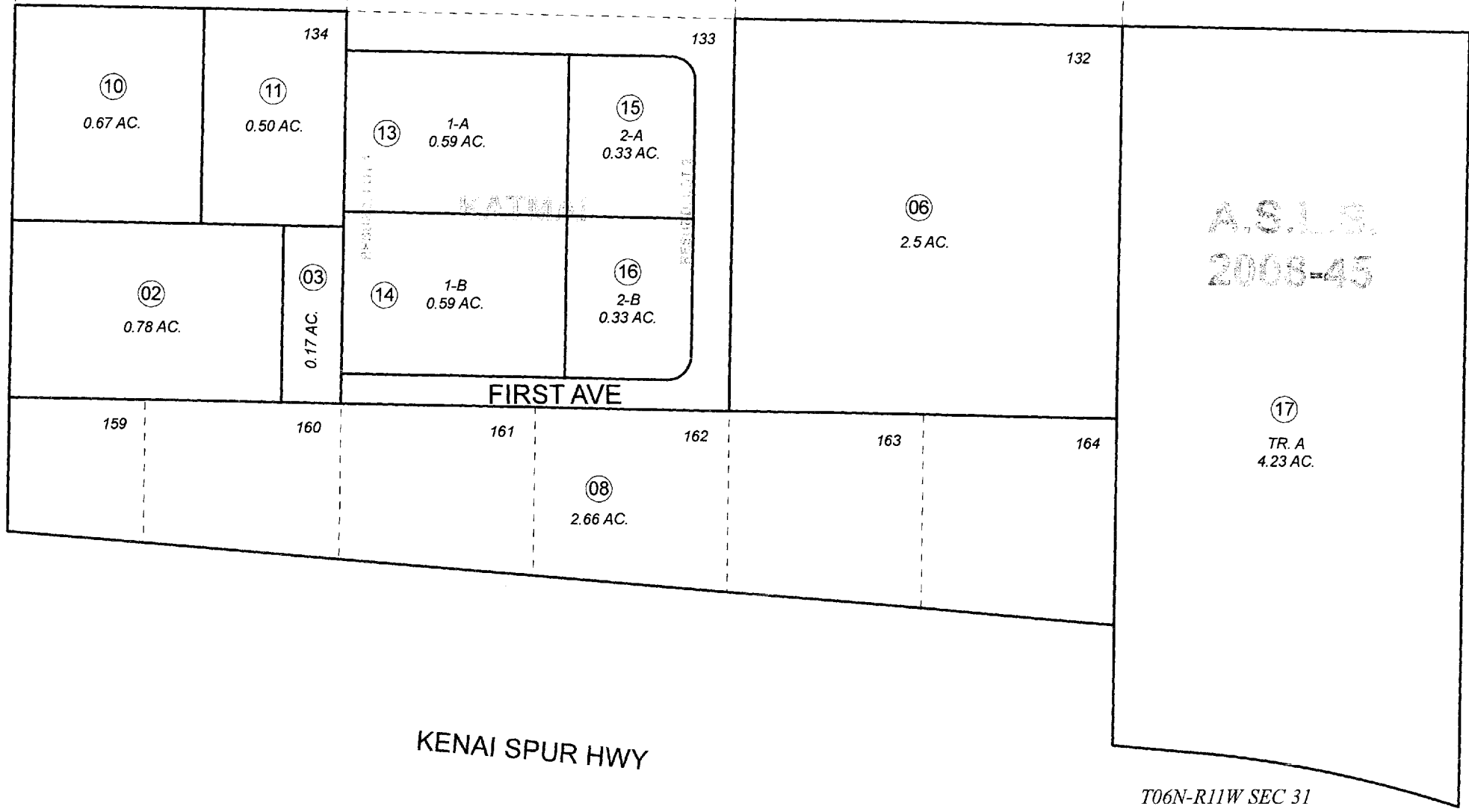


POR. SEC. 31, T06N, R11W, S.M.

043-160



JULY 8, 2010

For 2011 assessment roll		
Delete	Add	Revise
To		
07	17	

Assessor's Map
Kenai Peninsula Borough

BK
047

KATMAI SUB RESUB OF LOT 2 KN0760091
KATMAI SUB RESUB OF LOT 1 KN0760104
ALASKA STATE LAND SURVEY NO. 2008-45 KN2010023

This map is prepared for Kenai Peninsula Borough Assessing Dept. use only and is not intended for conveyance nor is it a survey.

Note- Assessor's block Numbers Shown in Ellipses
Assessor's Parcel Numbers Shown in Circles