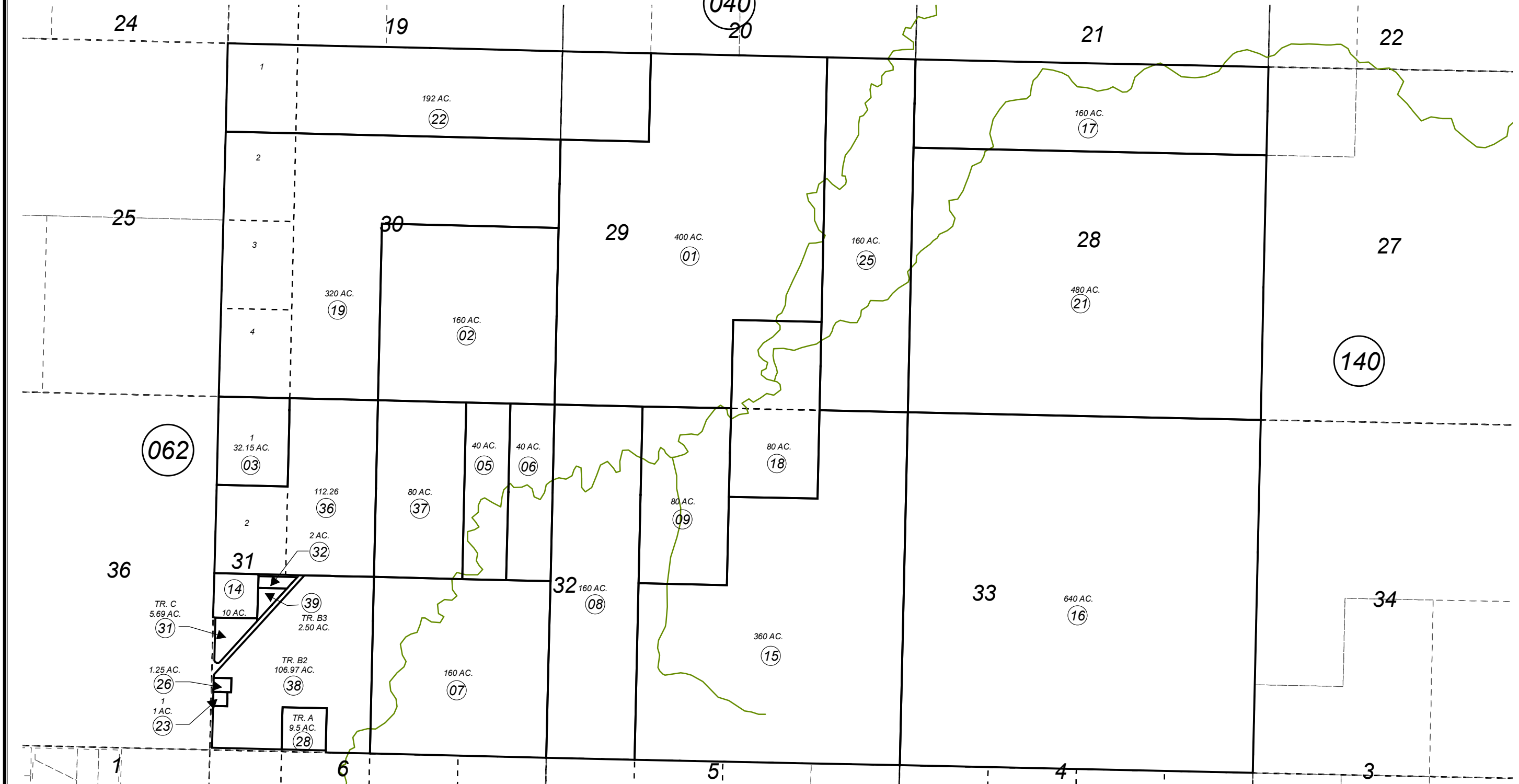


SEC. 28-33, T01S, R13W, S.M.

157-130



062

040
20

140

BK
185

AUGUST 29, 2018

For 2019 assessment roll		
Delete	Add	Revise
To		
11,13, 34,35	38,39	

Assessor's Map
Kenai Peninsula Borough

KINROD ADDN □ HM0810018
 KINROD 1998 ADDN □ HM0990008
 KINROD 1999 ADDN □ HM0990052
 KINROD 2003 ADDN □ HM2004074
 KINROD 2018 REPLAT HM2018029

This map is prepared for Kenai Peninsula Borough Assessing Dept. use only and is not intended for conveyance nor is it a survey.
 Note- Assessor's block Numbers Shown in Elipses
 Assessor's Parcel Numbers Shown in Circles

