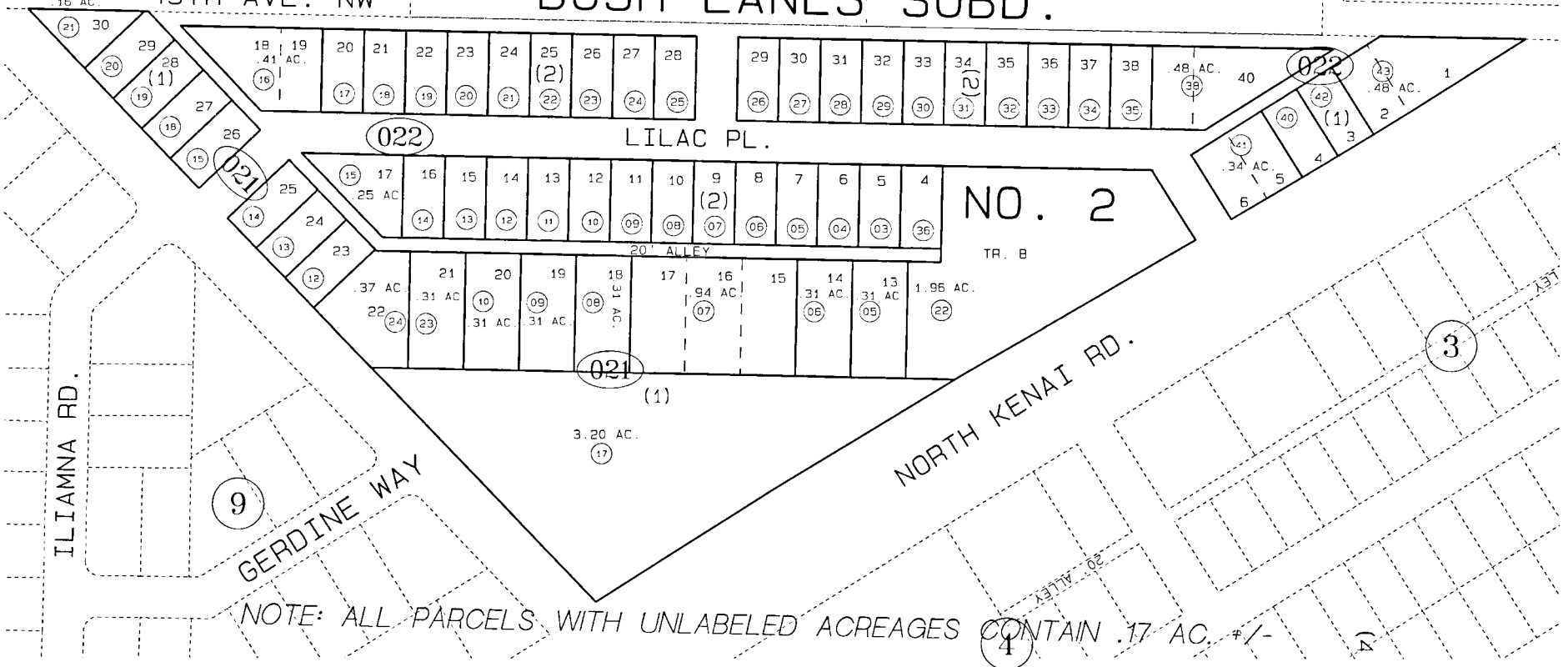


1

49TH AVE. NW

BUSH LANES SUBD.

49TH AVE



NOTE: ALL PARCELS WITH UNLABELED ACREAGES CONTAIN .17 AC. +/-

DATE: JAN. 31, 1996

FOR 19 96 ASSESSMENT ROLL

DELETE	ADD	REVISED

TO	
03902111	03902123
	03902124

BUSH LANES KN001018
BUSH LANES NO. 2 KN940054

Assessor's Map
Kenai Peninsula Borough



THIS MAP IS PREPARED FOR KENAI PENINSULA BOROUGH ASSESSING DEPT. USE ONLY AND IS NOT INTENDED FOR ANY OTHER USE OR REPRESENTATION

NOTE - Assessor's Block Numbers Shown in Ellipses
Assessor's Parcel Numbers Shown in Circles