

POR. SEC. 31, T06N, R11W

043-290

ELM AVE.

VE.

CYF

MAPL

SYCAMORE CIR. SYCAMORE

WALNUT AVE.

R DR.

WOODLAND

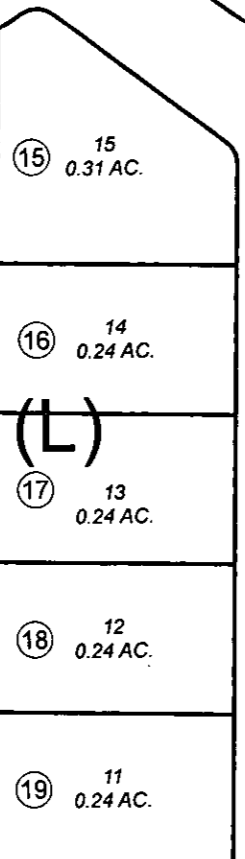
(250)

(300)

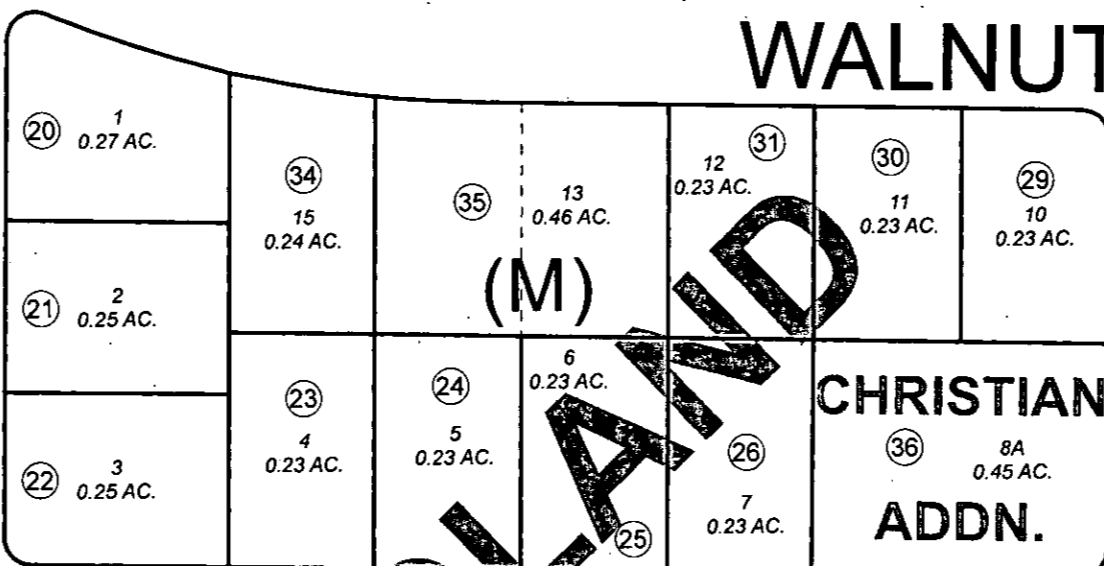
(350)

(250)

(L)

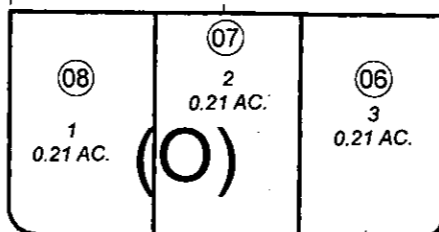


(L)

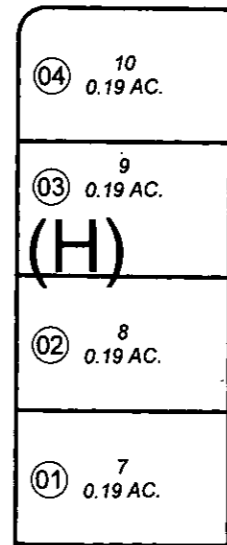
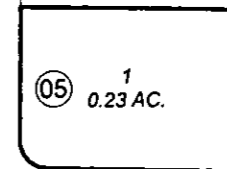


(M)

CHRISTIAN ADDN.



(O)



(H)



0 25 50 100 Feet

MAY 10, 2011

For 2011 assessment roll		
Delete	Add	Revise
To		
27,28	36	

Assessor's Map
Kenai Peninsula Borough

WOODLAND SUB PART 2 KN0001543
WOODLAND SUB CHRISTIAN ADDN KN2011014

Note- Assessor's block Numbers Shown in Ellipses
Assessor's Parcel Numbers Shown in Circles

This map is prepared for Kenai Peninsula Borough Assessing Dept. use only and is not intended for conveyance nor is it a survey.