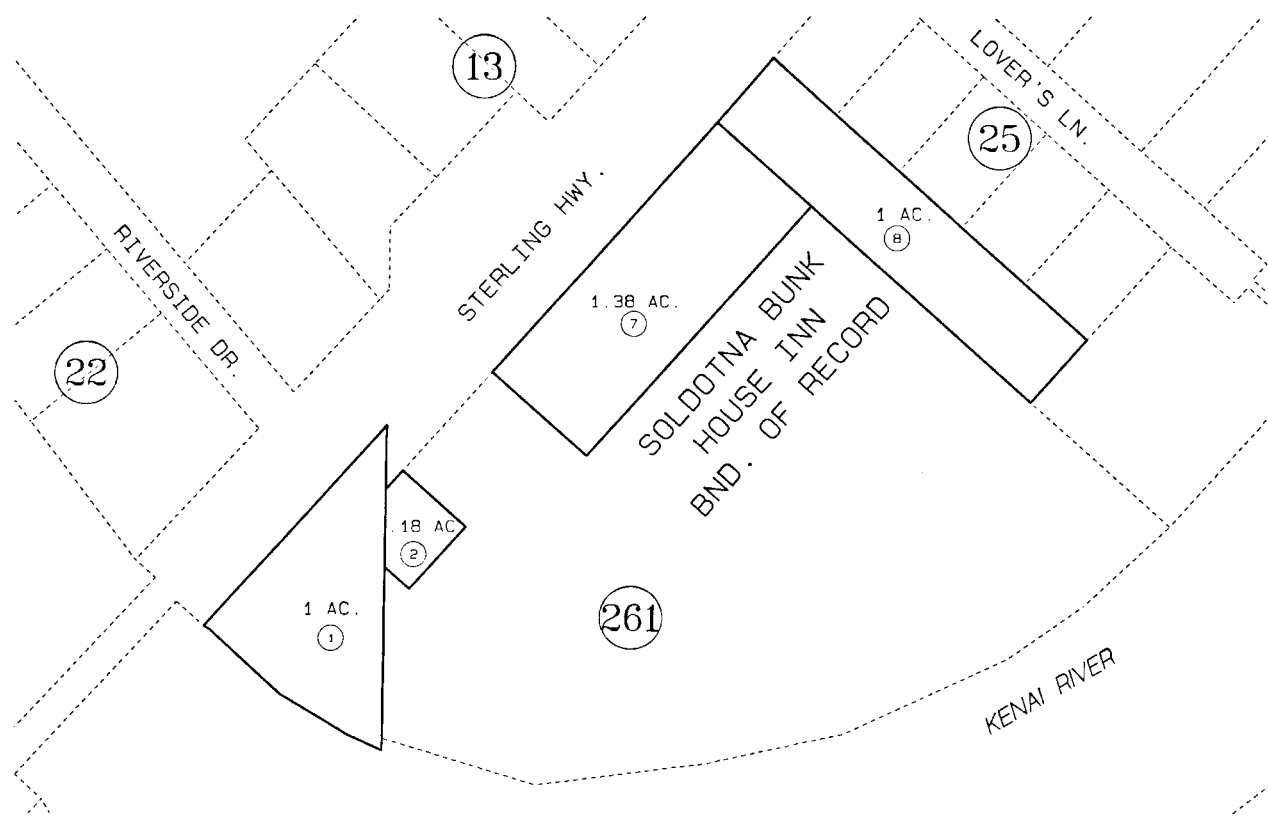


PORTION OF SEC. 32, T5N, R10W, SEWARD MERIDIAN

060-260



DATE: NOV. 26, 1996		
FOR 19 97 ASSESSMENT ROLL		
DELETE	ADD	REVISED
TO		
3	06026199	

Assessor's Map
Kenai Peninsula Borough

BK
135

B/S SOLDOTNA BUNK HOUSE INN BOUNDARY OF RECORD KN8200883S

THIS MAP IS PREPARED
FOR KENAI PENINSULA
BOROUGH ASSESSING DEPT.
USE ONLY AND IS NOT
INTENDED FOR ANY
OTHER USE OR REPRESENTATION

NOTE - Assessor's Block Numbers Shown In Ellipses
Assessor's Parcel Numbers Shown In Circles