

POP. SEC. 31, T5N, R10W, S.P. & M.

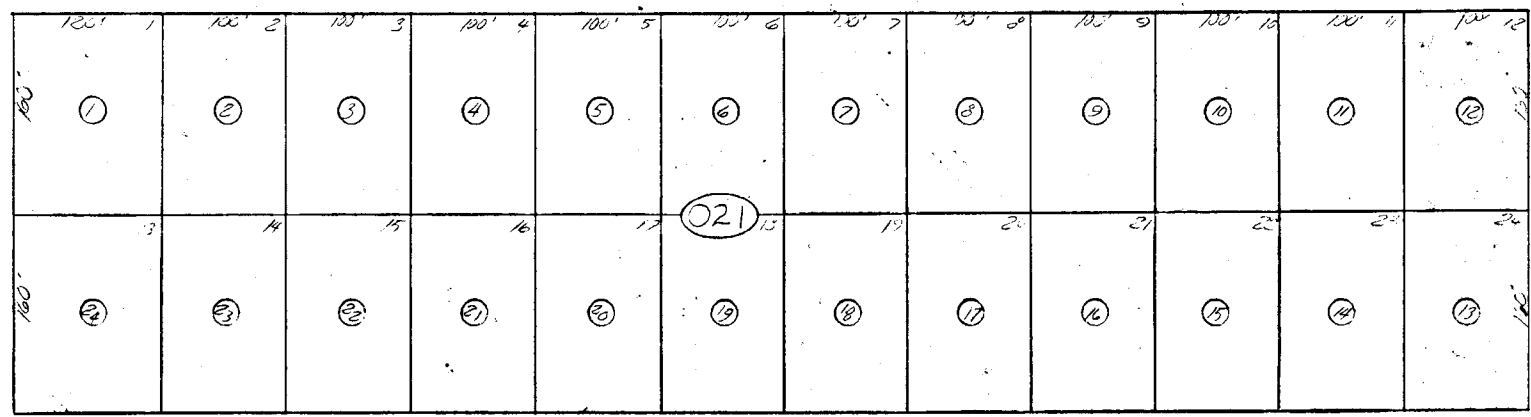
60-02

MON. REC.
86-99 AS
EAST
1/4 CORNER

BK
59

Section Line

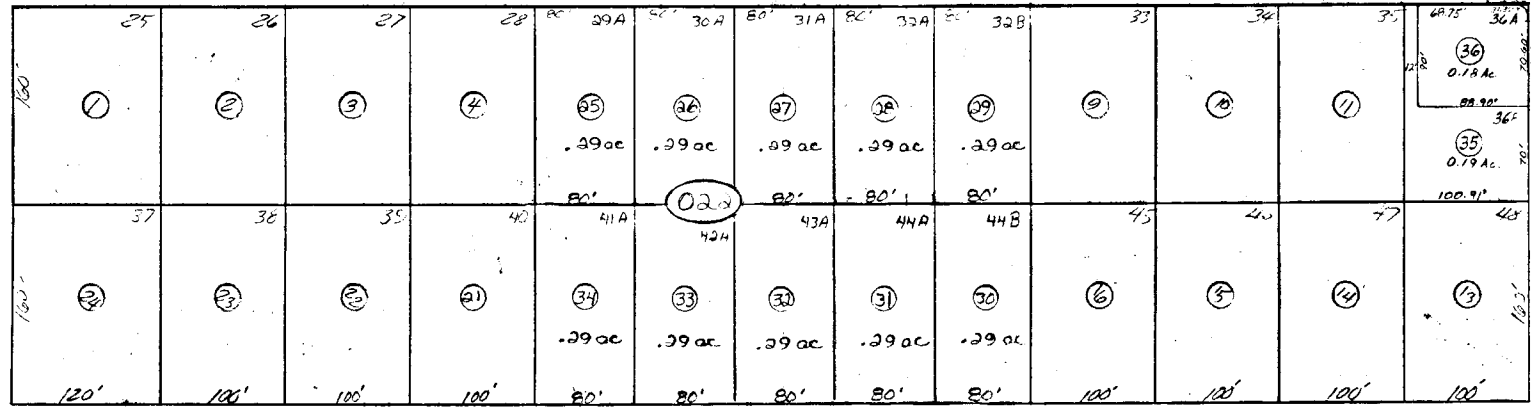
30 29
31 32



44

14

BELUGA ST. 60' R/W



BERING AVE 60' R/W

REPLAT LOTS 41, 42, 43 & 44
K-78-119

RIVER HEIGHTS SUBDIVISION
AMENDED K-1432

REPLAT LOTS 29, 30, 31 & 32
K-78-118

3