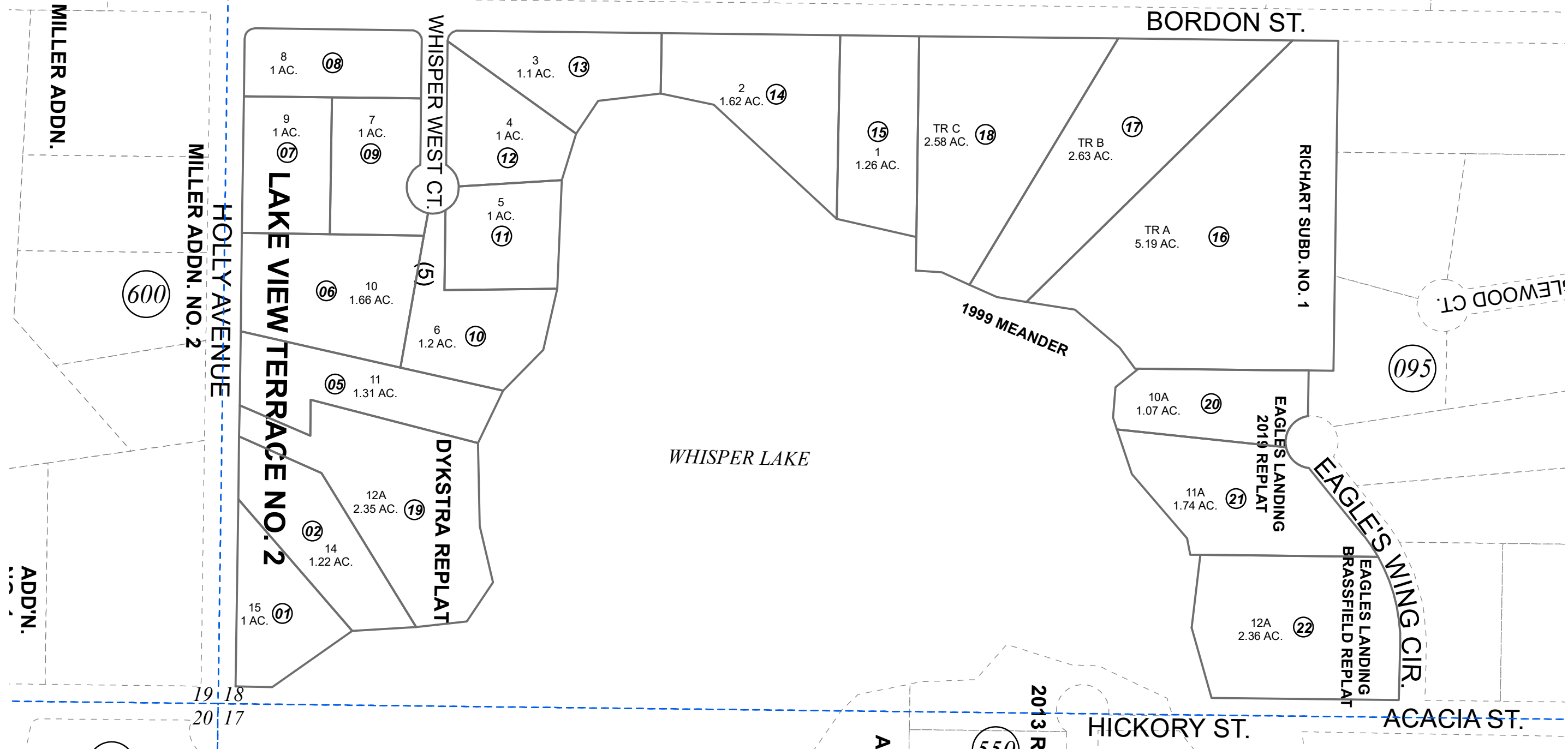


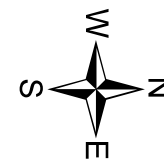
POR. SE1/4 SEC. 18, T05N, R09W, S.M.

063-292

095



291



0 50 100 200 Feet

SEPTEMBER 21, 2021

For 2022 assessment roll		
Delete	Add	Revise
	To	
09556,		
09557	22	

Assessor's Map
Kenai Peninsula Borough

- KN0870033 LAKE VIEW TERRACE SUB NO 2
- KN0990082 RICHART SUB NO 1
- KN2013005 LAKE VIEW TERRACE DYKSTRA REPLAT
- KN2019079 EAGLES LANDING SUB 2019 REPLAT
- KN2021049 EAGLES LANDING SUB BRASSFIELD REPLAT

This map is prepared for Kenai Peninsula Borough Assessing Dept. use only and is not intended for conveyance nor is it a survey.

Note- Assessor's block Numbers Shown in Ellipses
Assessor's Parcel Numbers Shown in Circles