

SEC. 29 & 30, T06N, R17W, S.M.

221-114

24

19

115

20

21

103

05

25

30

558.91 AC.

02

29

594.49 AC.

01

110

28

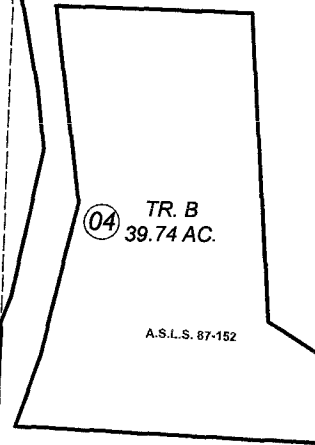
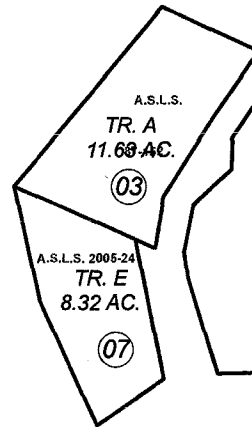
36

31

113

32

33



DECEMBER 31, 2008

For 2009 assessment roll

Delete	Add	Revise

To

2, 7

Assessor's Map
Kenai Peninsula Borough

ALASKA STATE CADASTRAL SURVEY AN0850094
 ALASKA STATE LAND SURVEY 87-152 AN0900030
 ALASKA STATE LAND SURVEY 2005-24 AN2007138

This map is prepared
 for Kenai Peninsula
 Borough Assessing Dept.
 use only and is not
 intended for conveyance
 nor is it a survey.

Note- Assessor's block Numbers Shown in Ellipses
 Assessor's Parcel Numbers Shown in Circles