

SEC. 27 & E1/2 SEC. 28, T2S, R3E, SEWARD MERIDIAN

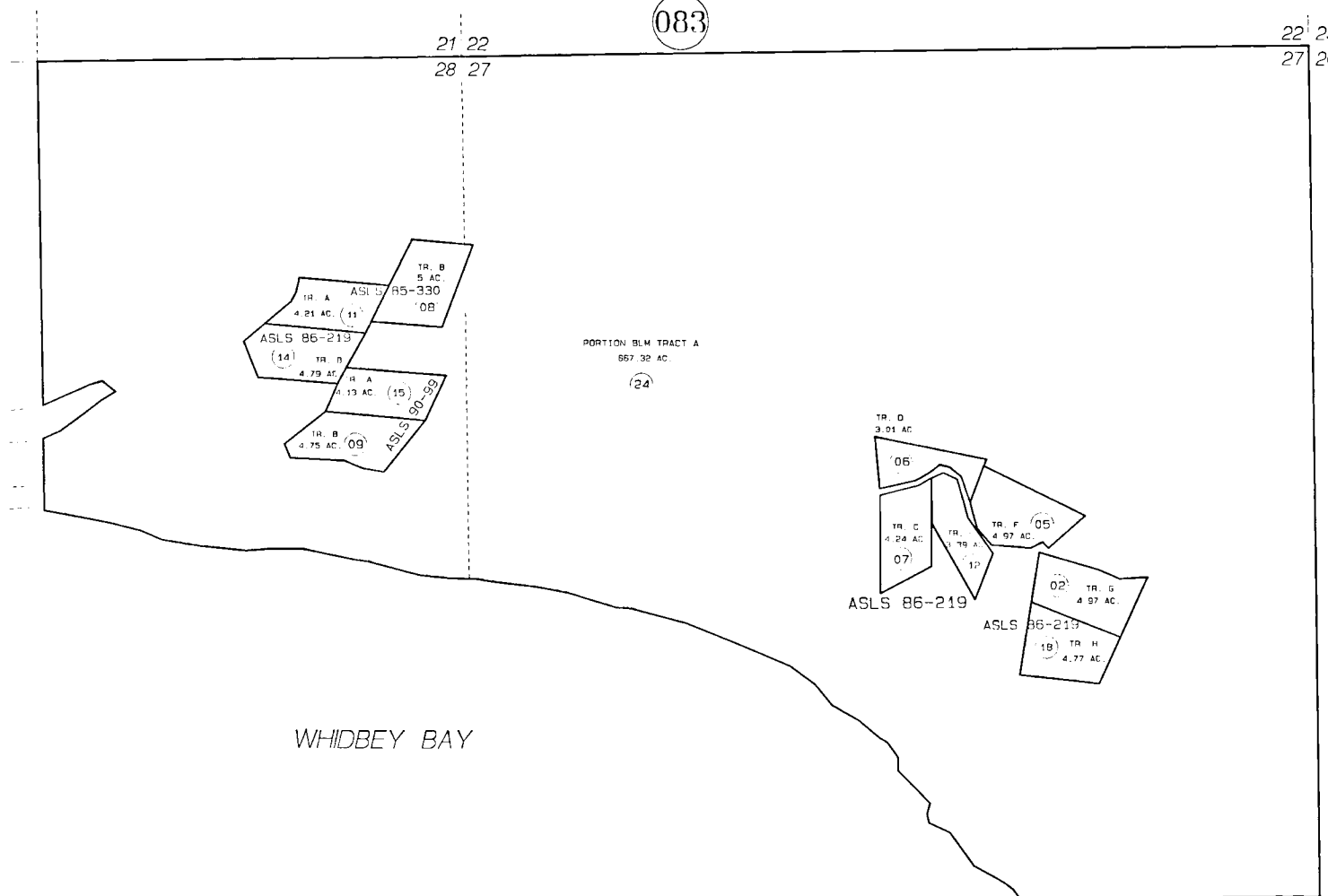
189-082

083

21 22
28 27

22 23
27 26

081



080

WHIDBEY BAY

PORTION BLM TRACT A
667.32 AC.

TR. D
3.01 AC.
06
TR. C
4.24 AC.
07
TR. E
1.75 AC.
12
TR. F
4.97 AC.
05
ASLS 86-219
TR. G
4.97 AC.
02
ASLS 86-219
TR. H
4.77 AC.
18

TR. B
5 AC.
08
ASLS 85-330
TR. A
4.21 AC.
11
ASLS 86-219
TR. B
4.79 AC.
14
TR. A
1.13 AC.
15
ASLS 90-99
TR. B
4.75 AC.
09

24

085

THIS MAP IS PREPARED FOR KENAI PENINSULA BOROUGH ASSESSING DEPT USE ONLY AND IS NOT INTENDED FOR ANY OTHER USE OR REPRESENTATION

NOTE - Assessor's Block Numbers Shown In Ellipses
Assessor's Parcel Numbers Shown In Circles

DATE: NOV. 2, 1995	
FOR 1996 ASSESSMENT ROLL	
DELETE	ADD REVISED
13	TO
21	

Assessor's Map
Kenai Peninsula Borough

ALASKA STATE LAND SURVEY 85-330 SW870010
ALASKA STATE LAND SURVEY 86-219 SW890016
ALASKA STATE LAND SURVEY 90-099 SW910011

