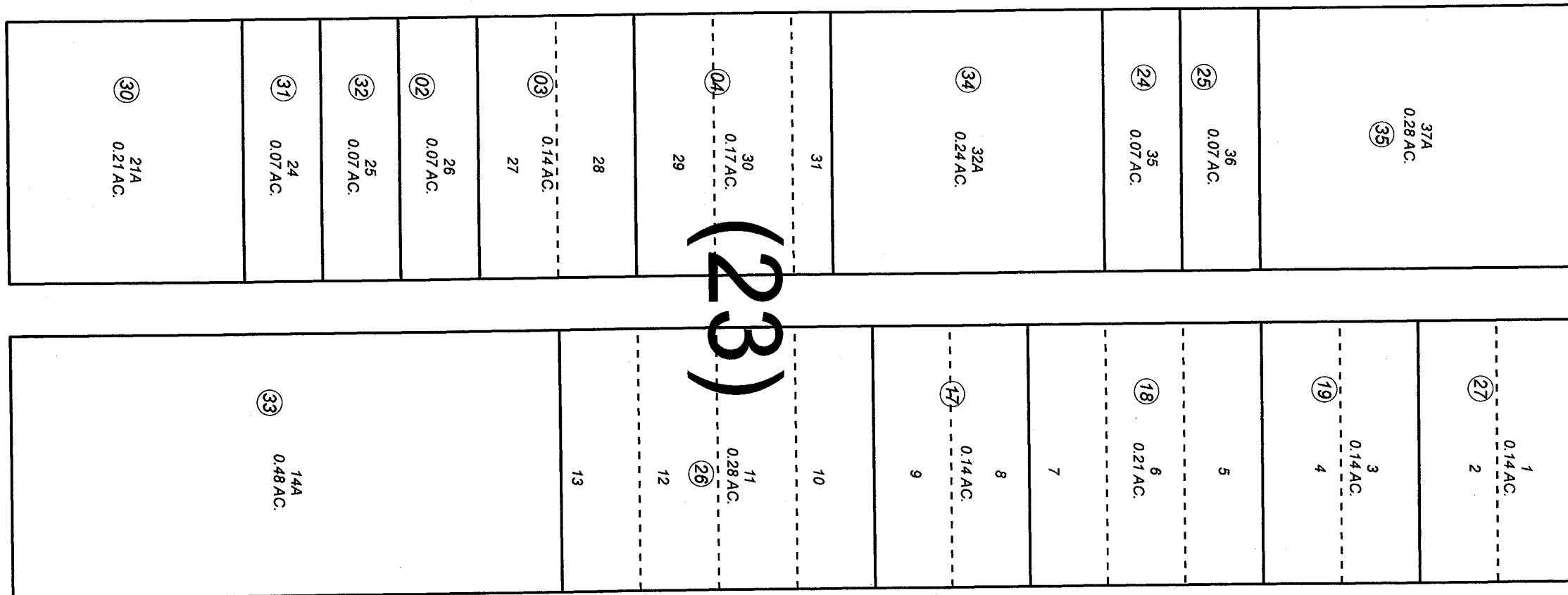


POR. SEC. 10, T01S, R01W, S.M.

148-120

100

FOURTH AVE.



MADISON ST.

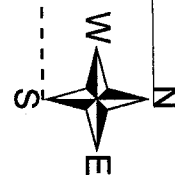
130

FIFTH AVE.

150

JUNE 13, 2008

For 2009 assessment roll		
Delete	Add	Revise
	To	
	28,29	35



Assessor's Map
Kenai Peninsula Borough

ORIGINAL TOWNSITE OF SEWARD SW0000001
 SEWARD ORIGINAL TOWNSITE HUSS REPLAT SW0990018
 SEWARD ORIGINAL TOWNSITE SW2000016
 SEWARD ORIGINAL TOWNSITE FIKE REPLAT SW2004020
 SEWARD ORIGINAL TOWNSITE AVTEC REPLAT SW2008006

Note- Assessor's block Numbers Shown in Elipses
 Assessor's Parcel Numbers Shown in Circles

This map is prepared
 for Kenai Peninsula
 Borough Assessing Dept.
 use only and is not
 intended for conveyance
 nor is it a survey.

JEFFERSON ST.

BK
149