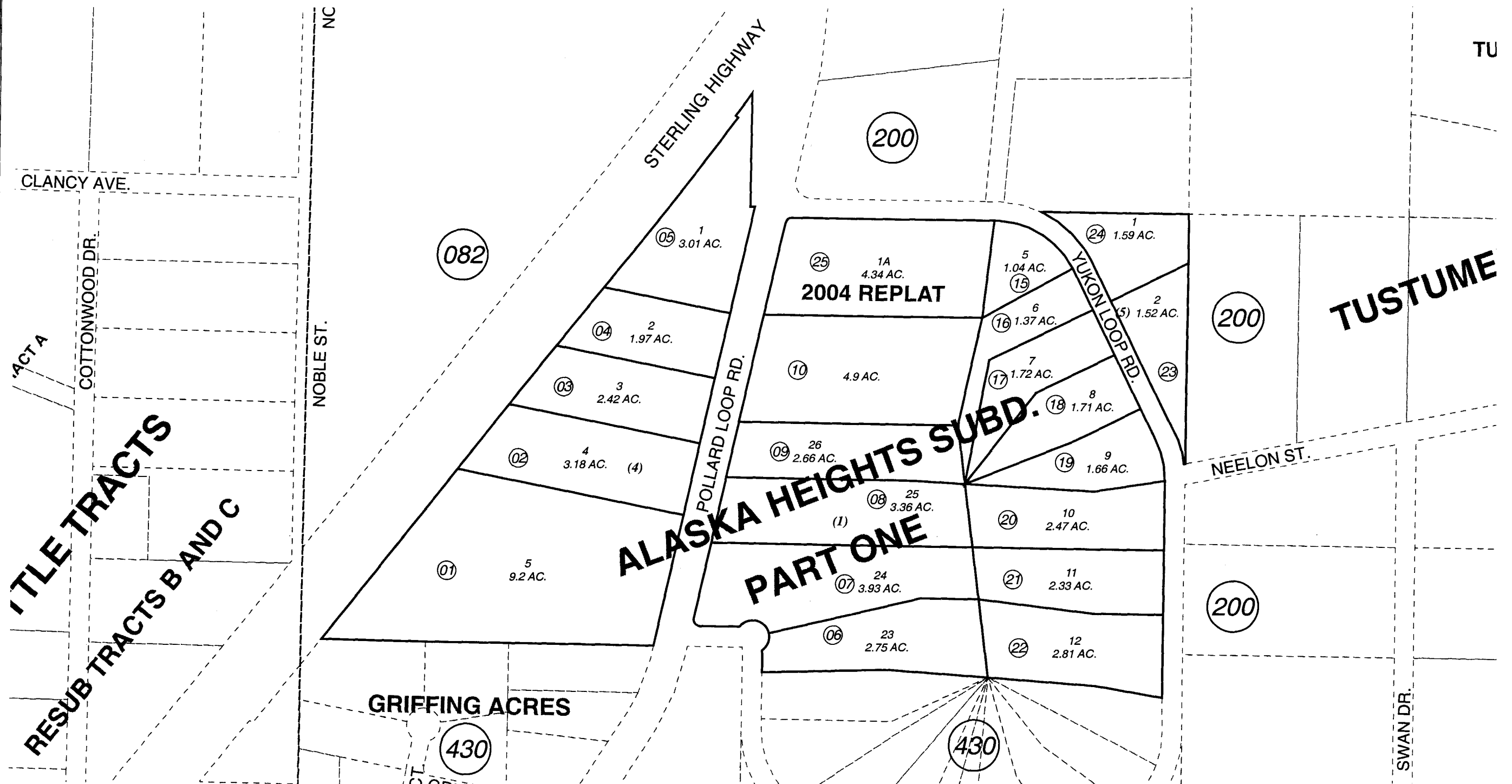


POR. SEC. 20, T03N, R11W, S.M.

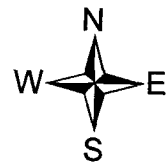
133-420

TU



DATE: Jan 04, 2005

For 2005 assessment roll		
Delete	Add	Revise
To		
11-14	25	



Assessor's Map  
Kenai Peninsula Borough

ALASKA HEIGHTS SUB PART 1 KN0780084  
ALASKA HEIGHTS SUB 2004 REPLAT KN2004123

This map is prepared for Kenai Peninsula Borough Assessing Dept. use only and is not intended for conveyance nor is it a survey.

Note- Assessor's block Numbers Shown in Elipses  
Assessor's Parcel Numbers Shown in Circles