

S1/2 NW1/4 & SW1/4 SE1/4 SEC. 18, T07N, R01W, S.M. 013-701

134

132

104

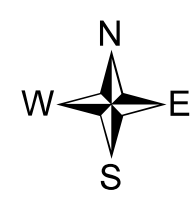
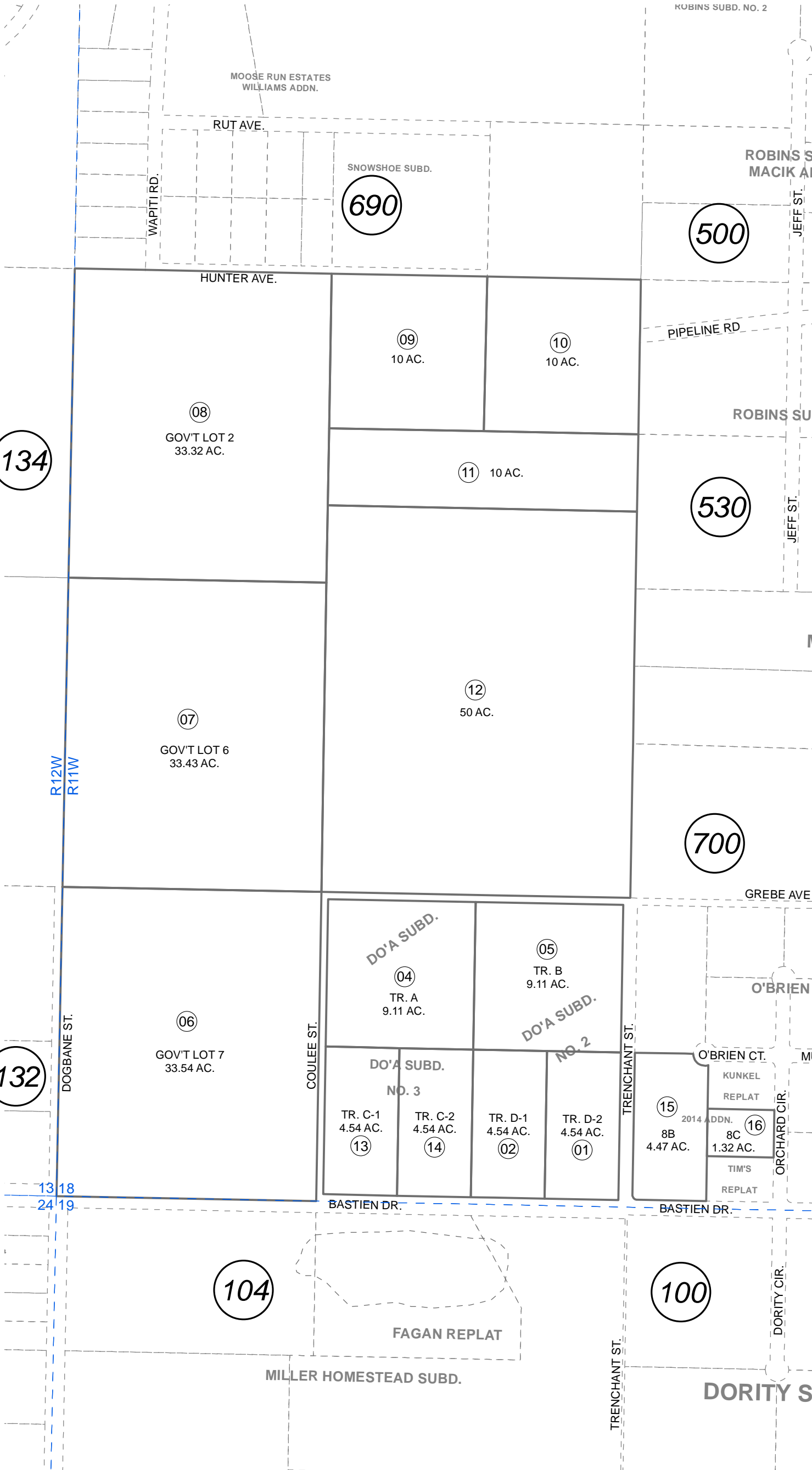
100

690

500

530

700



0 200 400 Feet

NOVEMBER 14, 2014	
For 2015 assessment roll	
Delete	Add
	Revise
To	
013-700-95	15,16

This map is prepared for Kenai Peninsula Borough Assessing Dept. use only and is not intended for conveyance nor is it a survey.

Note- Assessor's block Numbers Shown in Ellipses Assessor's Parcel Numbers Shown in Circles

DO'A SUB KN0780134  
 DO'A SUB NO. 2 KN0820019  
 DO'A SUB NO. 3 KN0910016  
 O'BRIEN ACRES 2014 ADDN KN2014080

Assessor's Map  
 Kenai Peninsula Borough