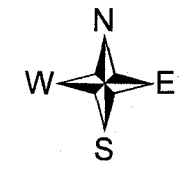
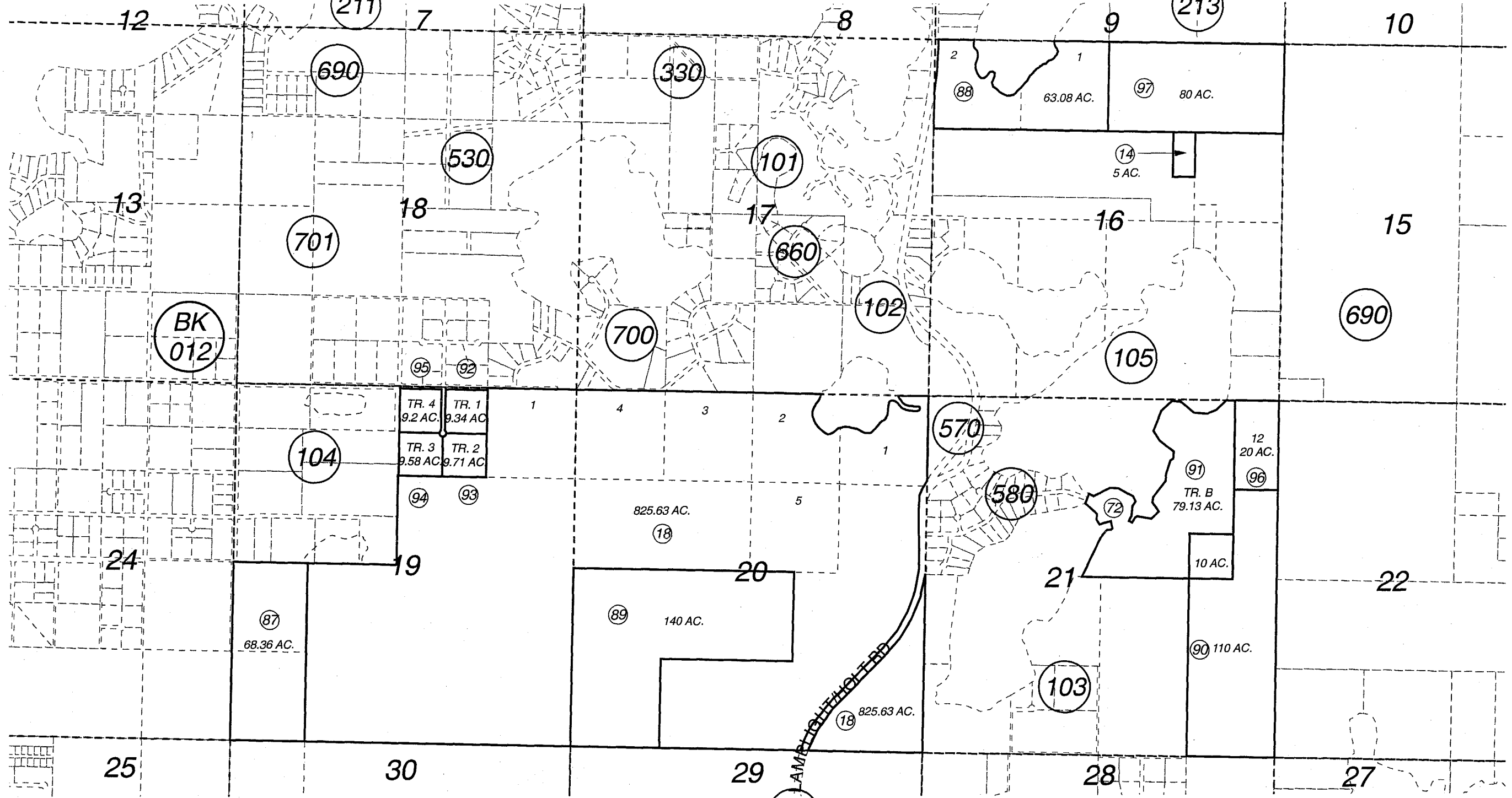


POR. SEC. 16 SEC. 21, T07N, R11W, S.M.

013-100



OCTOBER 2, 2006

For 2007 assessment roll		
Delete	Add	Revise
To		
98		

Assessor's Map  
Kenai Peninsula Borough

THOMPSON'S LAKE ESTATES KN0810048  
DORITY SUB KN0970022

This map is prepared for Kenai Peninsula Borough Assessing Dept. use only and is not intended for conveyance nor is it a survey.

Note- Assessor's block Numbers Shown in Elipses  
Assessor's Parcel Numbers Shown in Circles