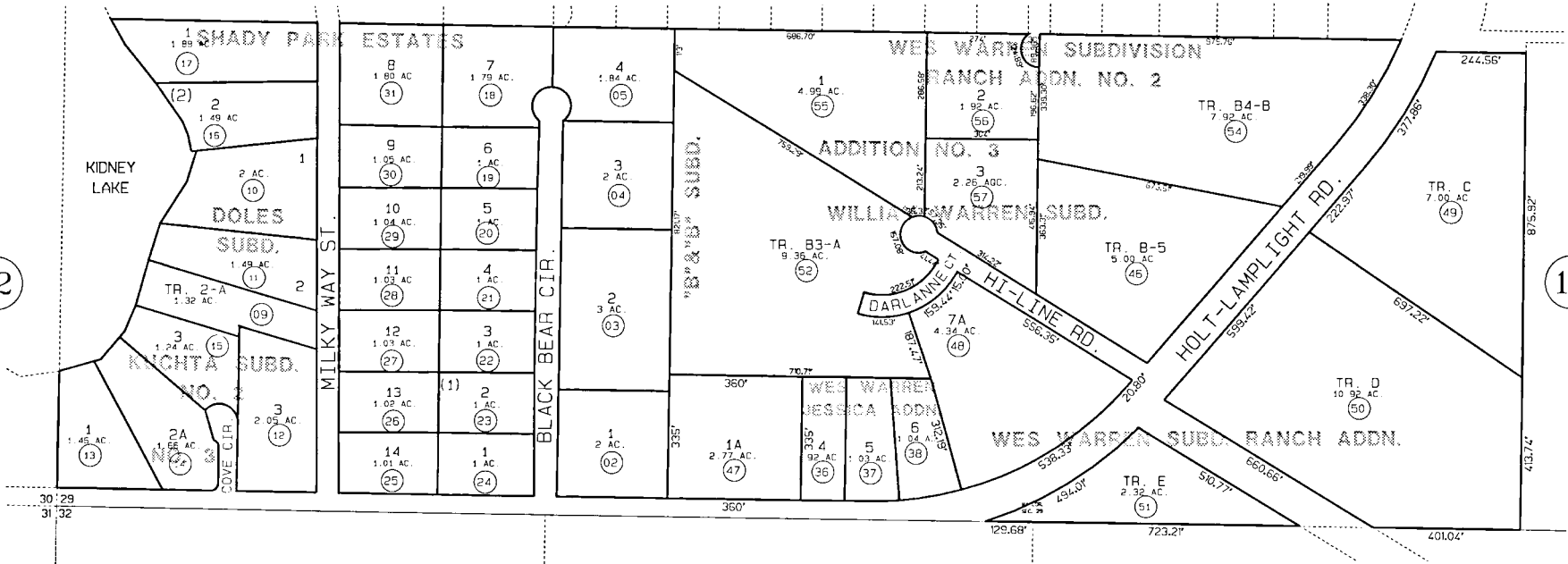


12

12

12



WES WARREN KN750107
 KUCHTA REPLAT TRACTS 2 & 3 KN770119
 B & B KN780233
 DOLES KN800086
 KUCHTA NO. 2 KN830116
 SHADY PARK ESTATES KN850134
 KUCHTA NO. 3 KN860230
 WES WARREN - JESSICA ADDN. KN910008
 WES WARREN - DARLANNE ADDN. KN940045
 WILLIAM WARREN KN950011
 WES WARREN - RANCH ADDN. KN970048
 WES WARREN - RANCH ADDN. NO. 2 KN980023
 WES WARREN - RANCH ADDN. NO. 3 KN200050

Assessor's Map
 Kenai Peninsula Borough

DATE: DEC. 18, 2000

FOR 2001 ASSESSMENT ROLL

DELETE ADD REVISED

TO

53 55-57

12

THIS MAP IS PREPARED
 FOR KENAI PENINSULA
 BOROUGH ASSESSING DEPT.
 USE ONLY AND IS NOT
 INTENDED FOR CONVEYANCE
 NOR IS IT A SURVEY

NOTE - Assessor's Block Numbers Shown In Ellipses
 Assessor's Parcel Numbers Shown In Circles