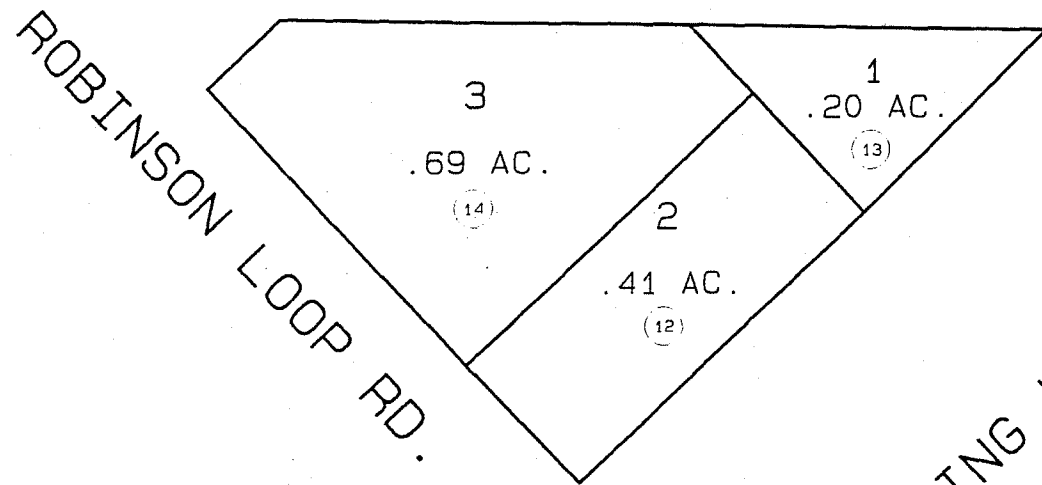


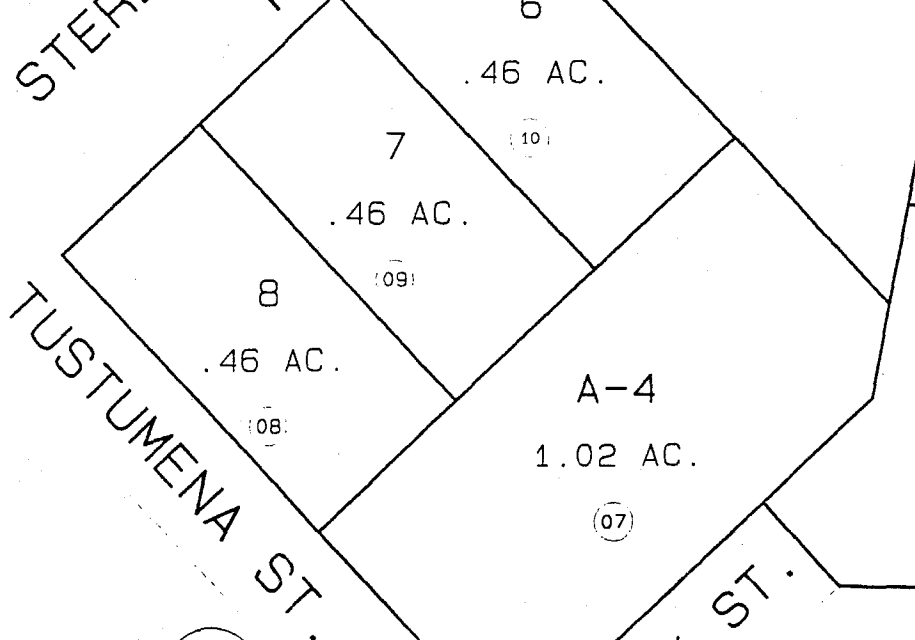
9

ROBINSON SUBD.

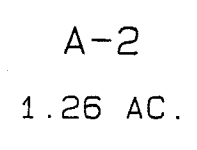
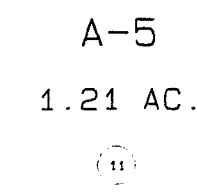
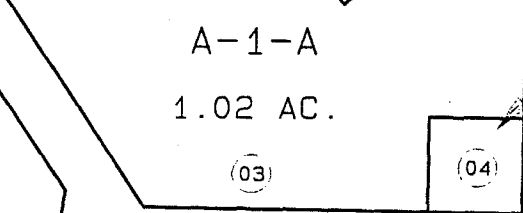
ROBINSON LOOP RD.



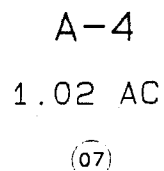
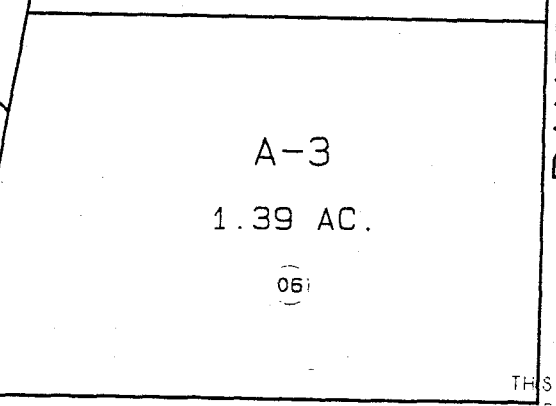
STERLING HWY.  
PANORAMIC PARK SUBD.



NO. 3



NO. 2



PANORAMIC DR.

9

9

DATE: NOV. 21, 1994

FOR YR 95 ASSESSMENT ROLL

DELETE ADD REVISED

TO

NEW PAGE

ROBINSON KN000894  
 PANORAMIC PARK KN01189  
 PANORAMIC PARK NO. 2 KN830148  
 PANORAMIC PARK NO. 3 KN840201

Assessor's Map

Kenai Peninsula Borough

13

THIS MAP IS PREPARED FOR KENAI PENINSULA BOROUGH ASSESSOR'S DEPT AND IS NOT INTENDED FOR ANY OTHER USE OR REPRESENTATION

NOTE - Assessor's Block Numbers Shown in Ellipses  
 Assessor's Parcel Numbers Shown in Circles