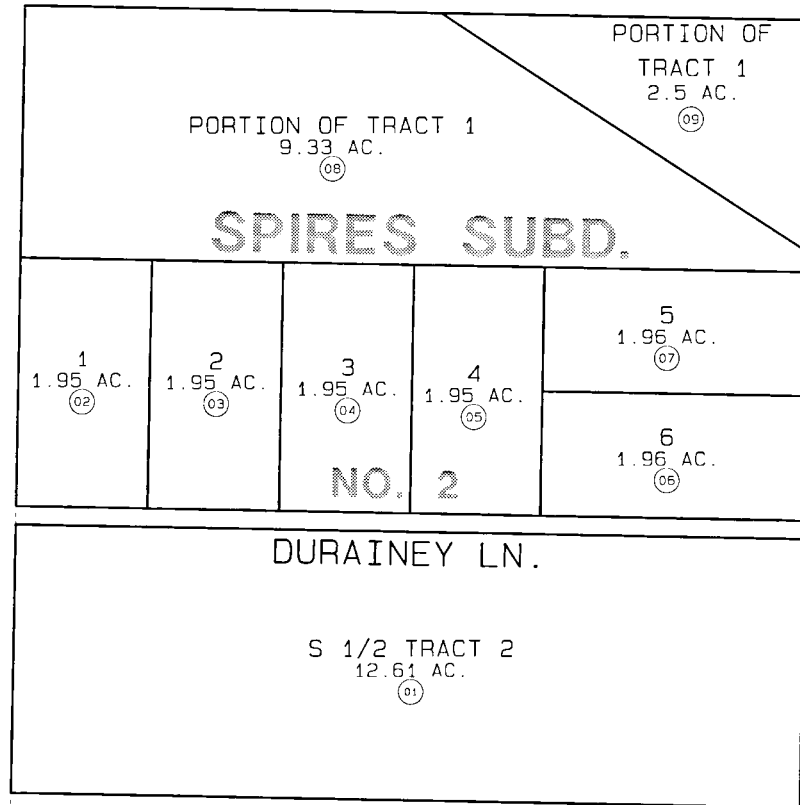


216



216

320

217



DATE: OCT. 3, 1997

FOR 1998 ASSESSMENT ROLL		
DELETE	ADD	REVISED
TO		
REPLACEMENT PAGE		

Assessor's Map
Kenai Peninsula Borough

SPIRES SUB KN750097
SPIRES SUB NO 2 KN820023

THIS MAP IS PREPARED FOR KENAI PENINSULA BOROUGH ASSESSING DEPT. USE ONLY AND IS NOT INTENDED FOR ANY OTHER USE OR REPRESENTATION

NOTE - Assessor's Block Numbers Shown in Ellipses
Assessor's Parcel Numbers Shown in Circles