

POR. N1/2 N1/2 SEC. 20, T05N, R09W, S.M.
 PHASE 1

063-291

WHISPER
 LAKE

EAST ADDITION

18 17
 19 20

PANORAMIG DR.

(6)

RUBIN WAY

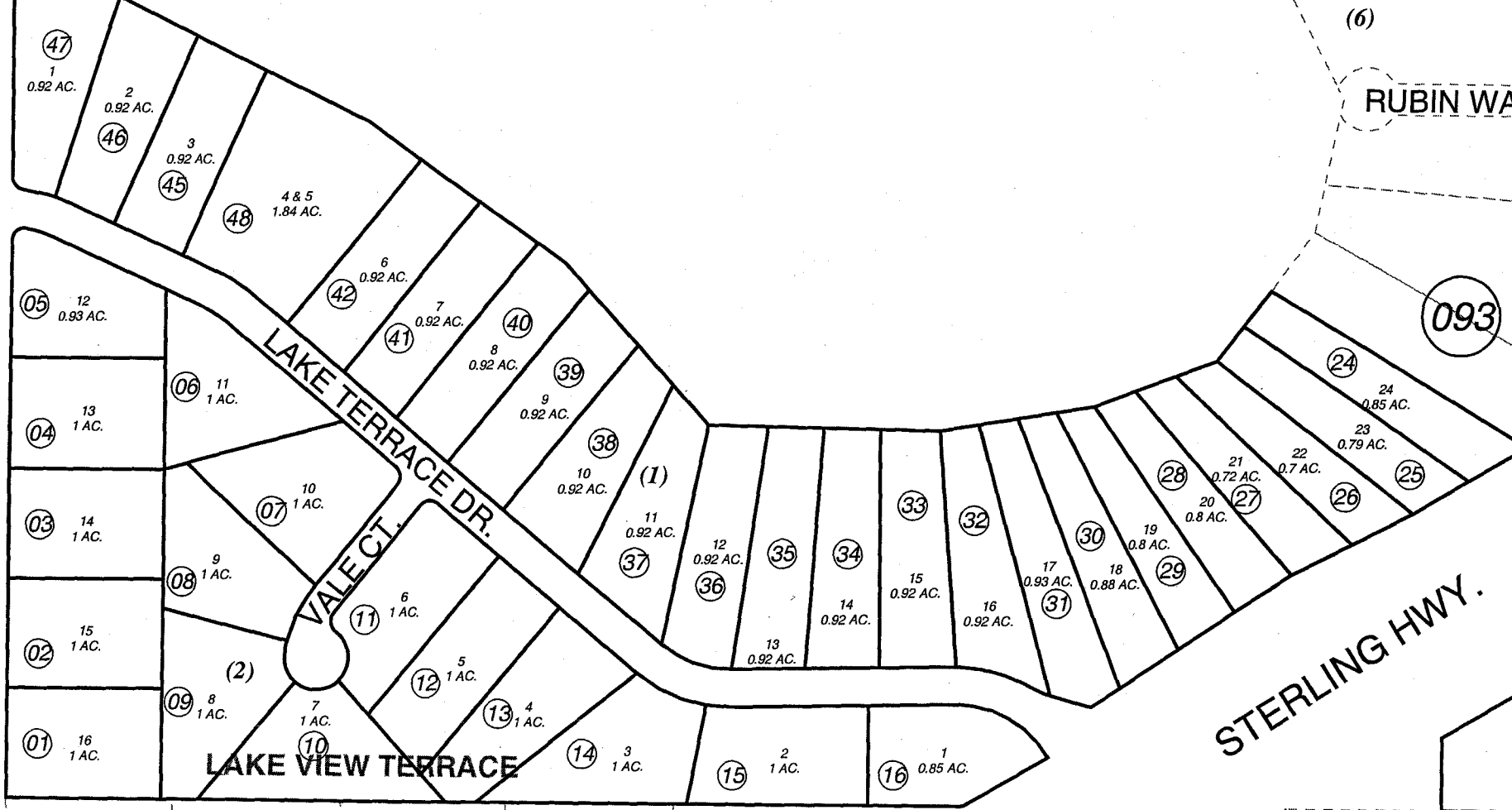
BEAU CIR.

(1)

093

ADD'N.
 NO. 1

600



LAKE VIEW TERRACE
 #3 PHASE ONE

093

CAY-BEE CT.

THERESA RD.

VARLAMOS REPLAT

(3)

WHISPER ACRES SUBDIVISION

290

NO. 2

STERLING HWY.

290

NO. 2



JULY 30, 2004

| | | |
|--------------------------|-----|--------|
| For 2005 assessment roll | | |
| Delete | Add | Revise |
| To | | |
| 18-23 | 49 | |

Assessor's Map
 Kenai Peninsula Borough

LAKE VIEW TERRACE SUB AMENDED KN0870025
 LAKE VIEW TERRACE VARLAMOS REPLAT KN2004045

This map is prepared for Kenai Peninsula Borough Assessing Dept. use only and is not intended for conveyance nor is it a survey.

Note- Assessor's block Numbers Shown in Ellipses
 Assessor's Parcel Numbers Shown in Circles