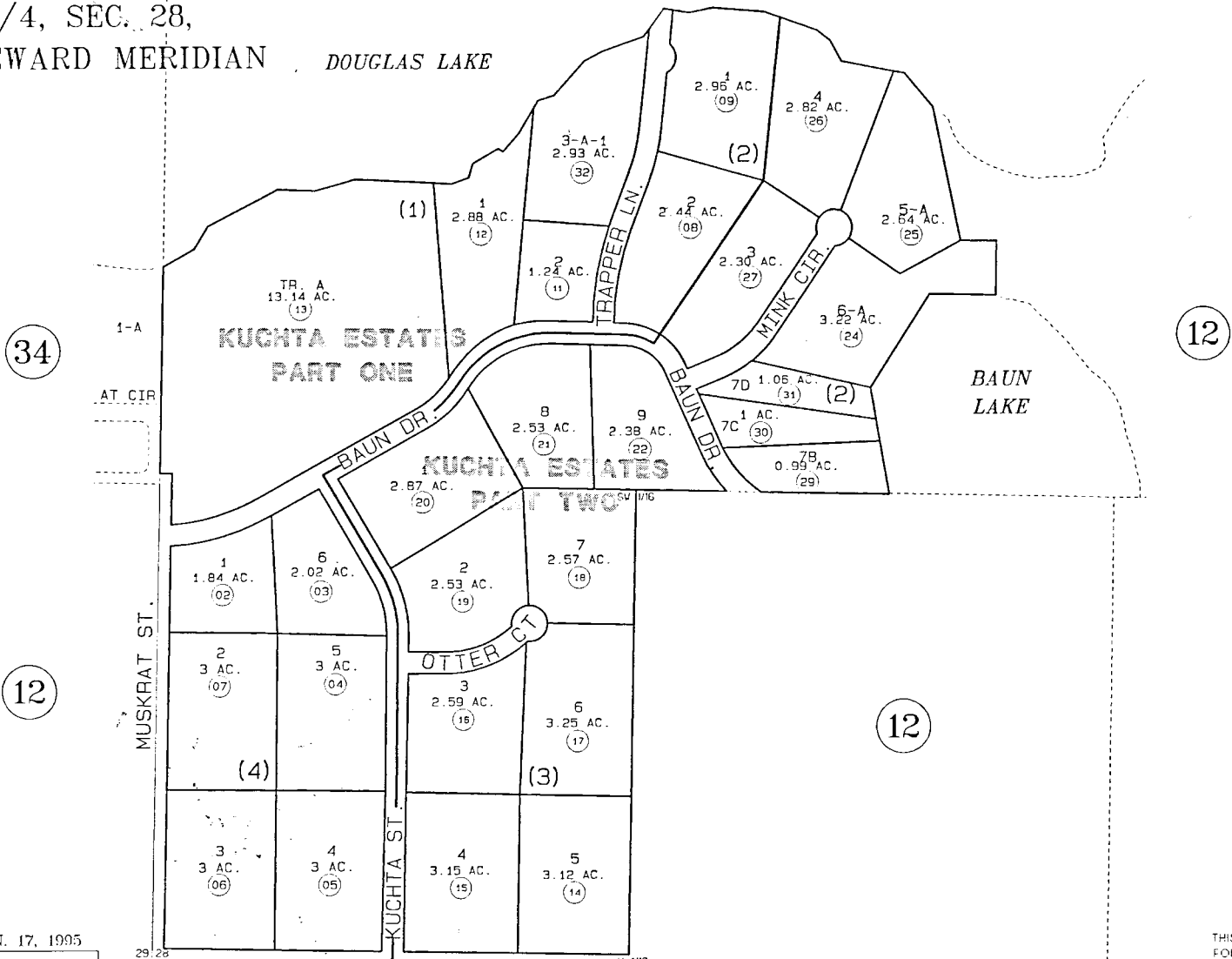


POR. SW1/4, SEC. 28,
T7N, R11W, SEWARD MERIDIAN DOUGLAS LAKE

013-370



DATE: JAN. 17, 1995

FOR 1995 ASSESSMENT ROLL

DELETE	ADD	REVISED

TO	
10	32

Assessor's Map
Kenai Peninsula Borough

12

KUCHTA ESTATES PART 1
KUCHTA ESTATES PART 2
KUCHTA ESTATES PART 2 REPLAT LOTS 5 & 6 BLOCK 2
KUCHTA ESTATES PART TWO LOTS 7A & 7B BLOCK 2
KUCHTA ESTATES PART TWO LOTS 7C & 7D, BLK. 2
KUCHTA ESTATES PART 1 REPLAT LOT 3A BLOCK 1

KN770033
KN770109
KN760028
KN830131
KN870010
KN910006

NOTE - Assessor's Block Numbers Shown In Ellipses
Assessor's Parcel Numbers Shown In Circles

THIS MAP IS PREPARED
FOR KENAI PENINSULA
BOROUGH ASSESSING DEPT.
USE ONLY AND IS NOT
INTENDED FOR ANY
OTHER USE OR REPRESENTATION

