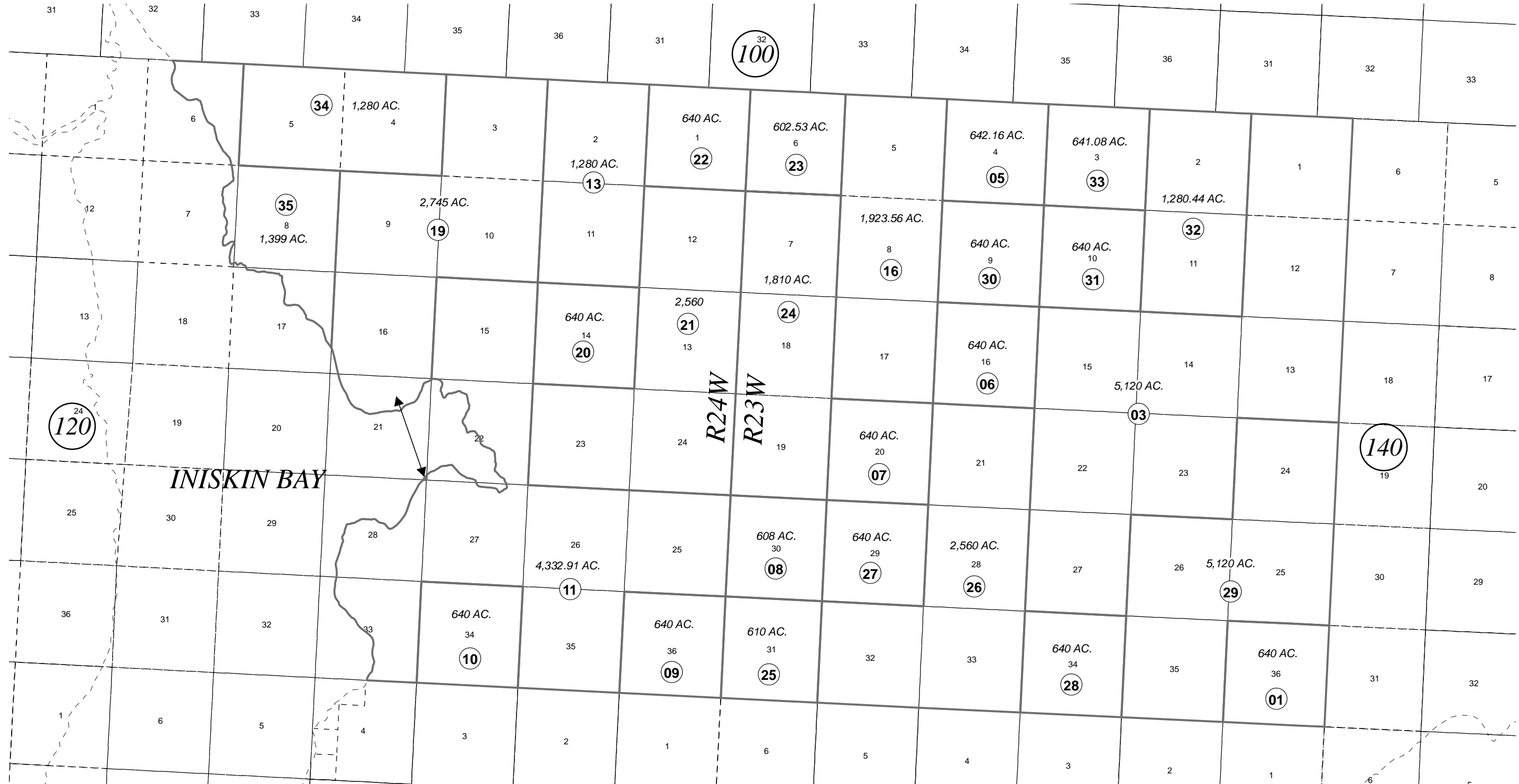


T05S, R23W, R24W, S.M.

231-130



OCTOBER 31, 2013



0 2,500 5,000 Feet

| For 2014 assessment roll |       |        |
|--------------------------|-------|--------|
| Delete                   | Add   | Revise |
|                          | To    |        |
| 18                       | 34,35 |        |

Assessor's Map  
Kenai Peninsula Borough

150

This map is prepared for Kenai Peninsula Borough Assessing Dept. use only and is not intended for conveyance nor is it a survey.

Note- Assessor's block Numbers Shown in Ellipses  
Assessor's Parcel Numbers Shown in Circles