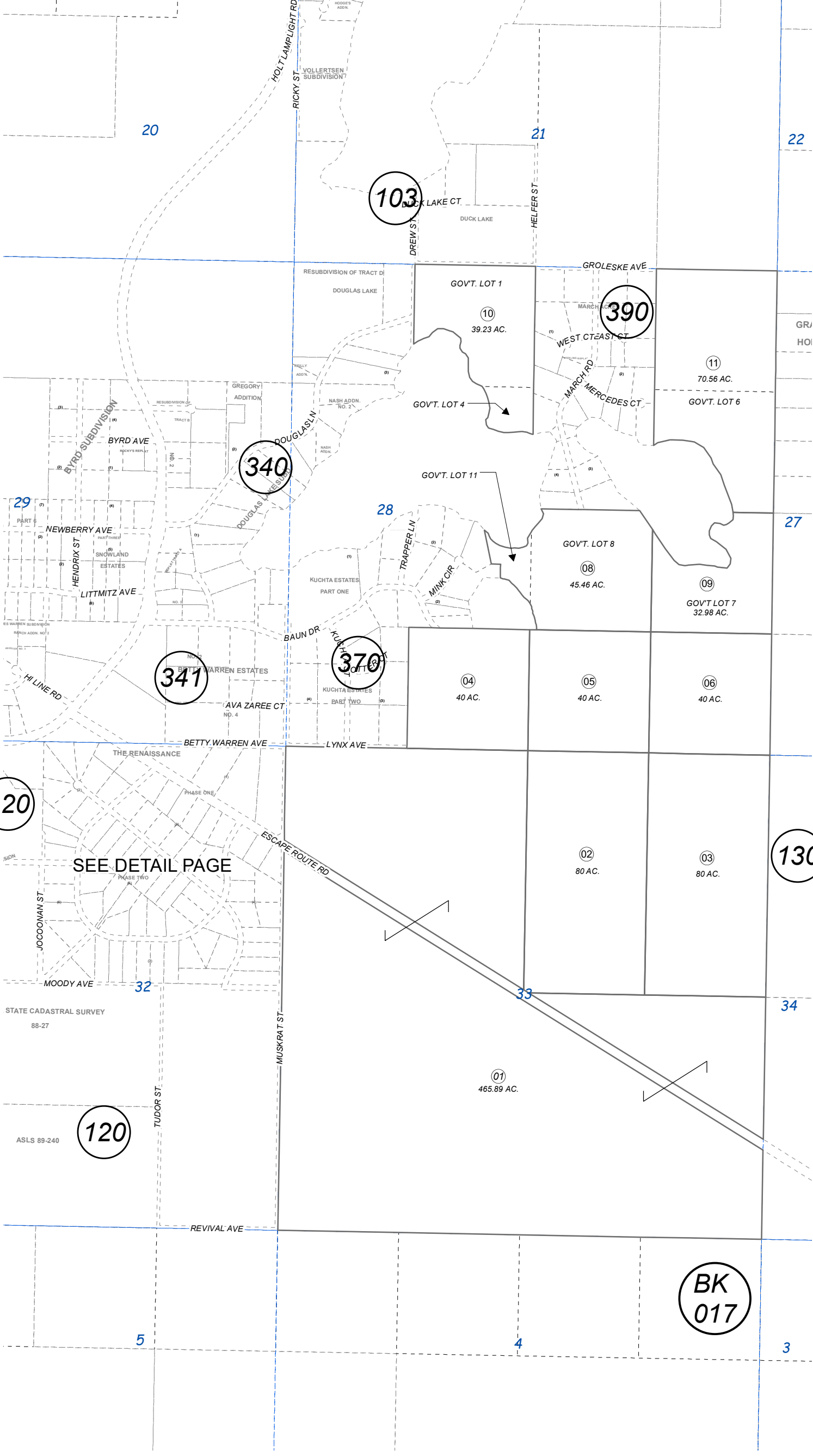


013-122

POR. SEC. 28 & 32, AND SEC. 33, T07N, R11W, S.M.



SEE DETAIL PAGE



0 500 1,000 Feet

DECEMBER 18, 2020	
For 2021 assessment roll	
Delete	Add
122-28	29-93
To	
(SEE DETAIL PAGE)	

This map is prepared for Kenai Peninsula Borough Assessing Dept. use only and is not intended for conveyance nor is it a survey.

Note- Assessor's block Numbers Shown in Ellipses
Assessor's Parcel Numbers Shown in Circles

THE RENAISSANCE PHASE ONE KN2014051
THE RENAISSANCE PHASE TWO KN2020065

Assessor's Map
Kenai Peninsula Borough