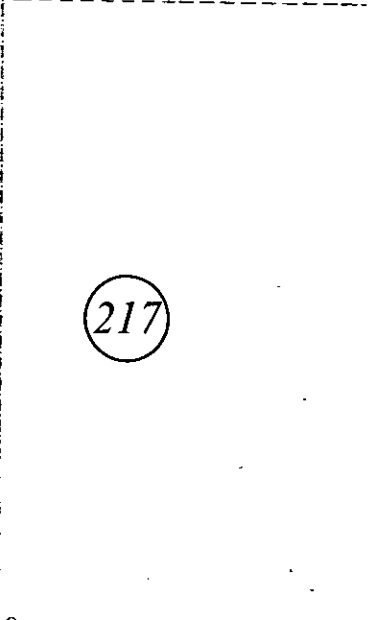
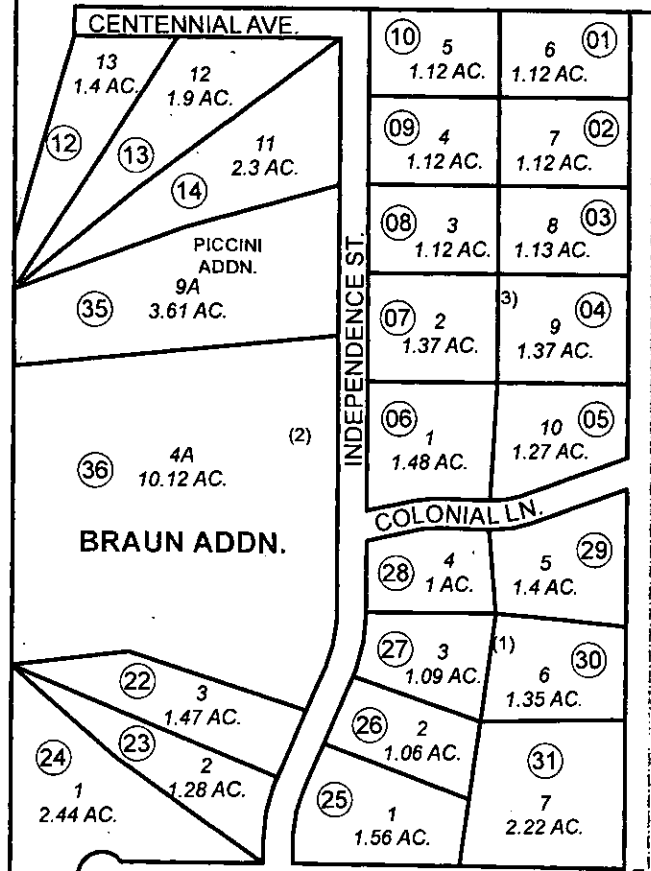
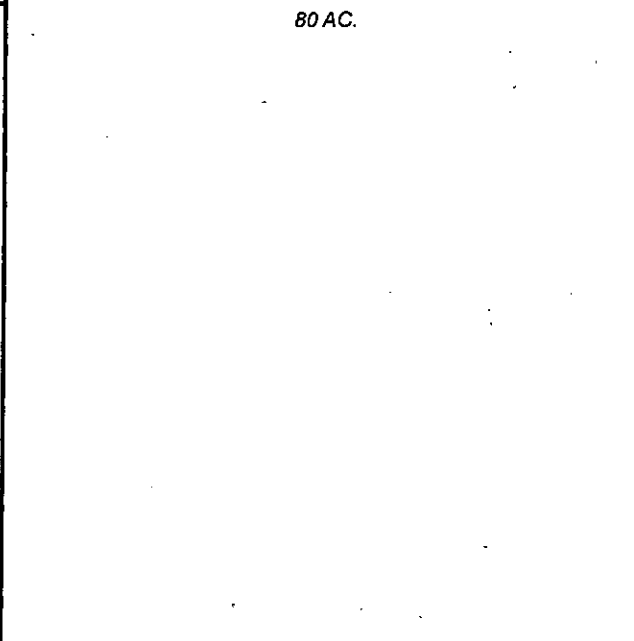
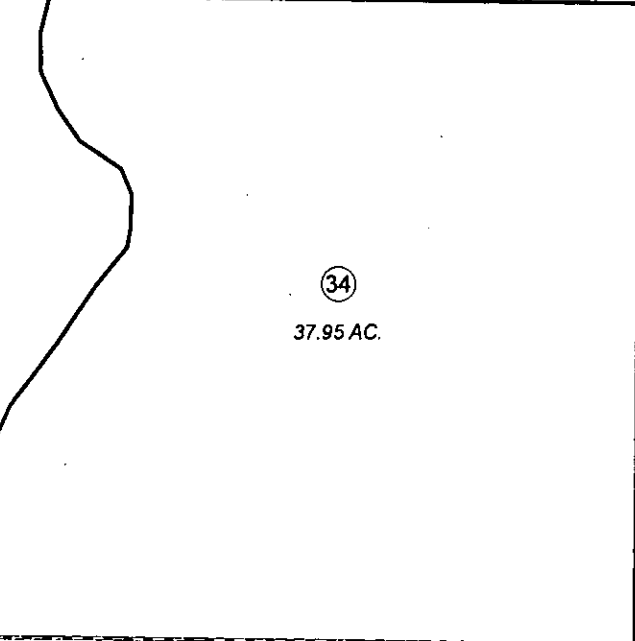
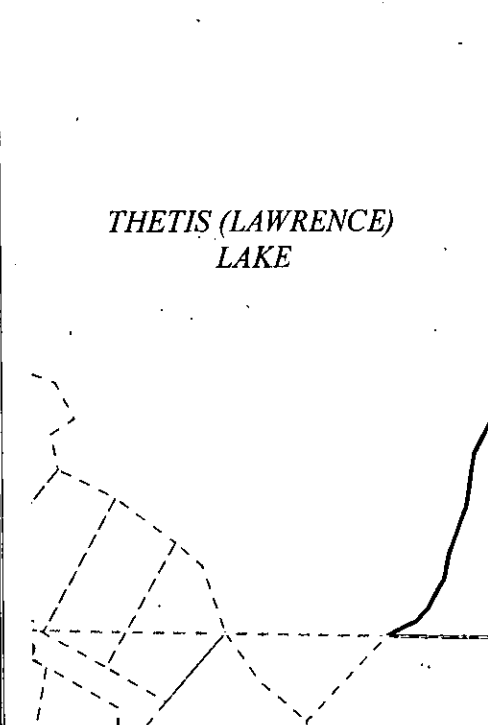
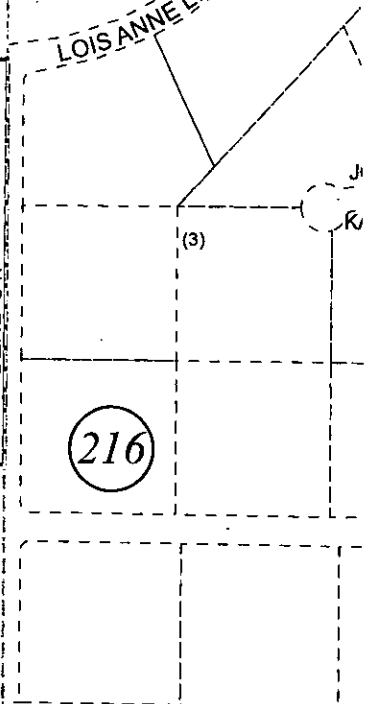
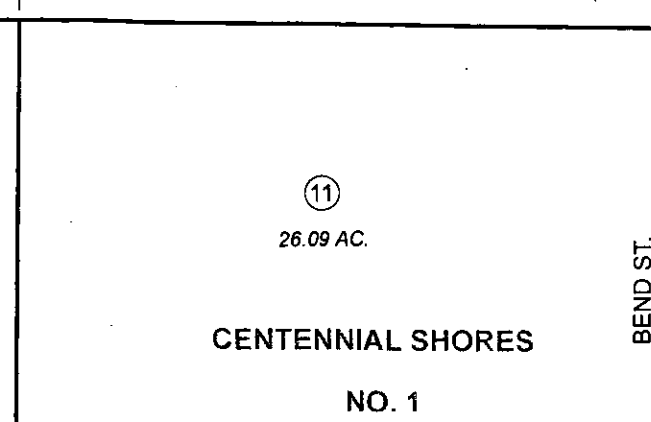
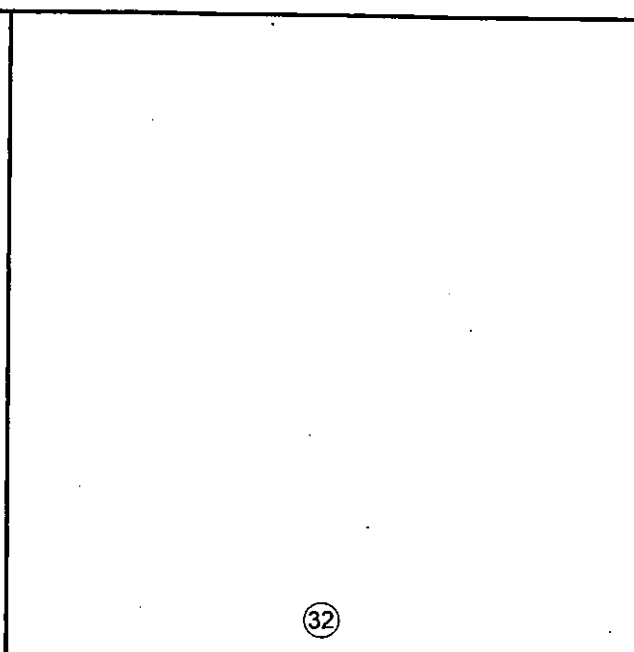
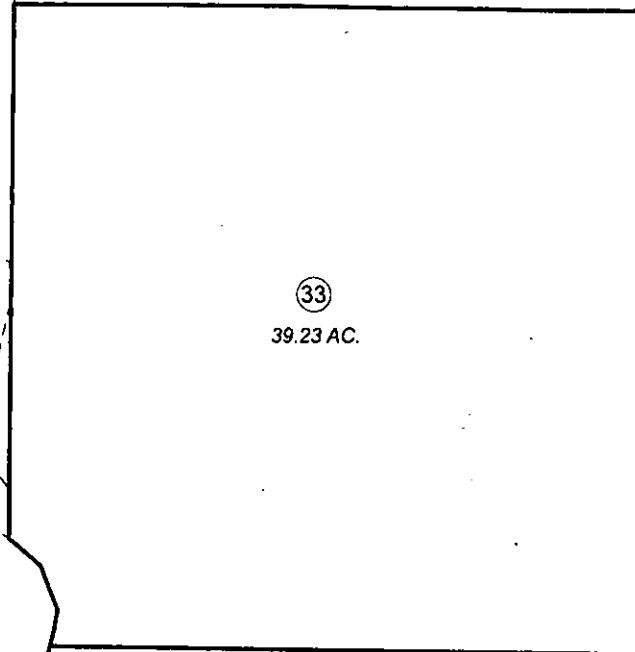
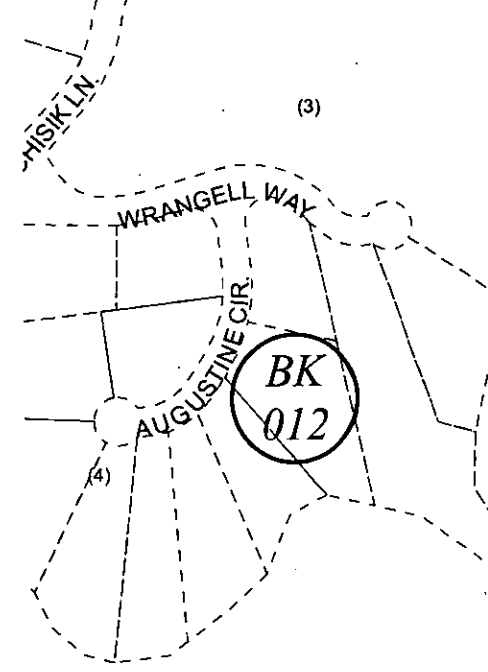


S 1/2, SEC. 07, T07N, R11W, S.M.

211

013-218



690

500

7:8
18:17

MAY 17, 2011

For 2012 assessment roll		
Delete	Add	Revise
To		
17-21	36	



0 100 200 400 Feet

Assessor's Map
Kenai Peninsula Borough

CENTENNIAL SHORES SUB NO. ONE KN0850157
 CENTENNIAL SHORES SUB PICCINI ADDN KN2010046
 CENTENNIAL SHORES SUB BRAUN ADDN KN2011017

This map is prepared for Kenai Peninsula Borough Assessing Dept. use only and is not intended for conveyance nor is it a survey.
 Note- Assessor's block Numbers Shown in Elipses
 Assessor's Parcel Numbers Shown in Circles