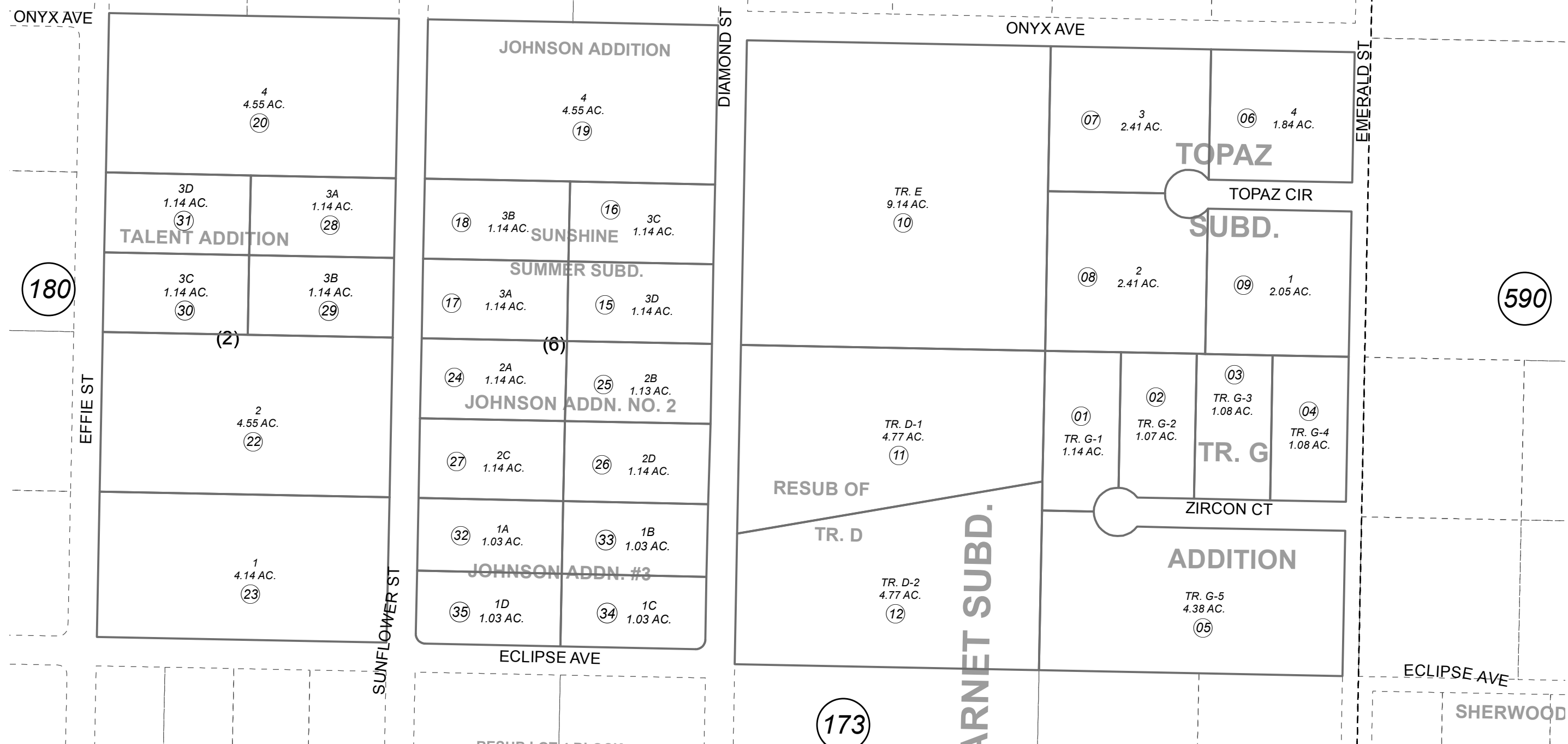


N1/2 SE1/4 SEC. 25, T07N, R12W, S.M.

015-172

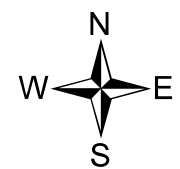
171



180

590

173



0 50 100 200 Feet

JANUARY 16, 2015

For 2015 assessment roll		
Delete	Add	Revise
	To	
13	32-35	

Assessor's Map
Kenai Peninsula Borough

GARNET SUB KN0740106
 SUNSHINE ESTATES SUB KN0760072
 GARNET SUB RESUB OF TRACT D KN0780185
 TOPAZ SUB KN0790060
 SUNSHINE-SUMMER SUB KN0820028
 GARNET SUB TRACT G ADDN KN0850104
 SUNSHINE ESTATES SUB JOHNSON ADDN NO 2 KN2005064
 SUNSHINE ESTATES SUB TALENT ADDN KN2007034
 SUNSHINE ESTATES JOHNSON ADDN #3 KN2014099

Note- Assessor's block Numbers Shown in Ellipses
 Assessor's Parcel Numbers Shown in Circles

This map is prepared for Kenai Peninsula Borough Assessing Dept. use only and is not intended for conveyance nor is it a survey.