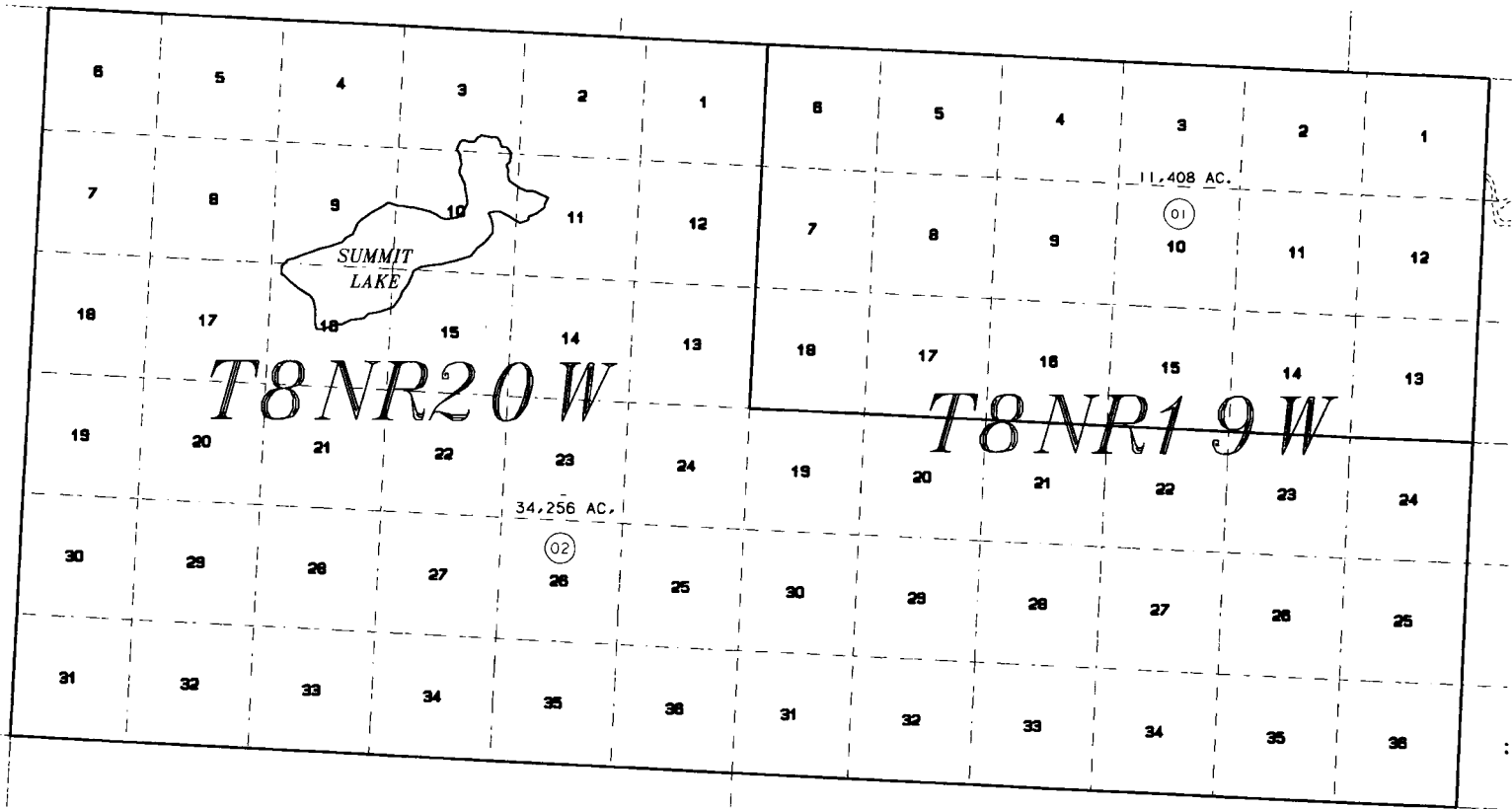


BK  
211



2

5



DATE: AUG. 20, 1993

FOR 1994 ASSESSMENT ROLL		
DELETE	ADD	REVISED
TO		
2		

NOTE - Assessor's Block Numbers Shown In Ellipses Assessor's Map  
 Assessor's Parcel Numbers Shown In Circles Kenai Peninsula Borough

THIS MAP IS PREPARED FOR KENAI PENINSULA BOROUGH ASSESSING DEPT. USE ONLY AND IS NOT INTENDED FOR ANY OTHER USE OR REPRESENTATION