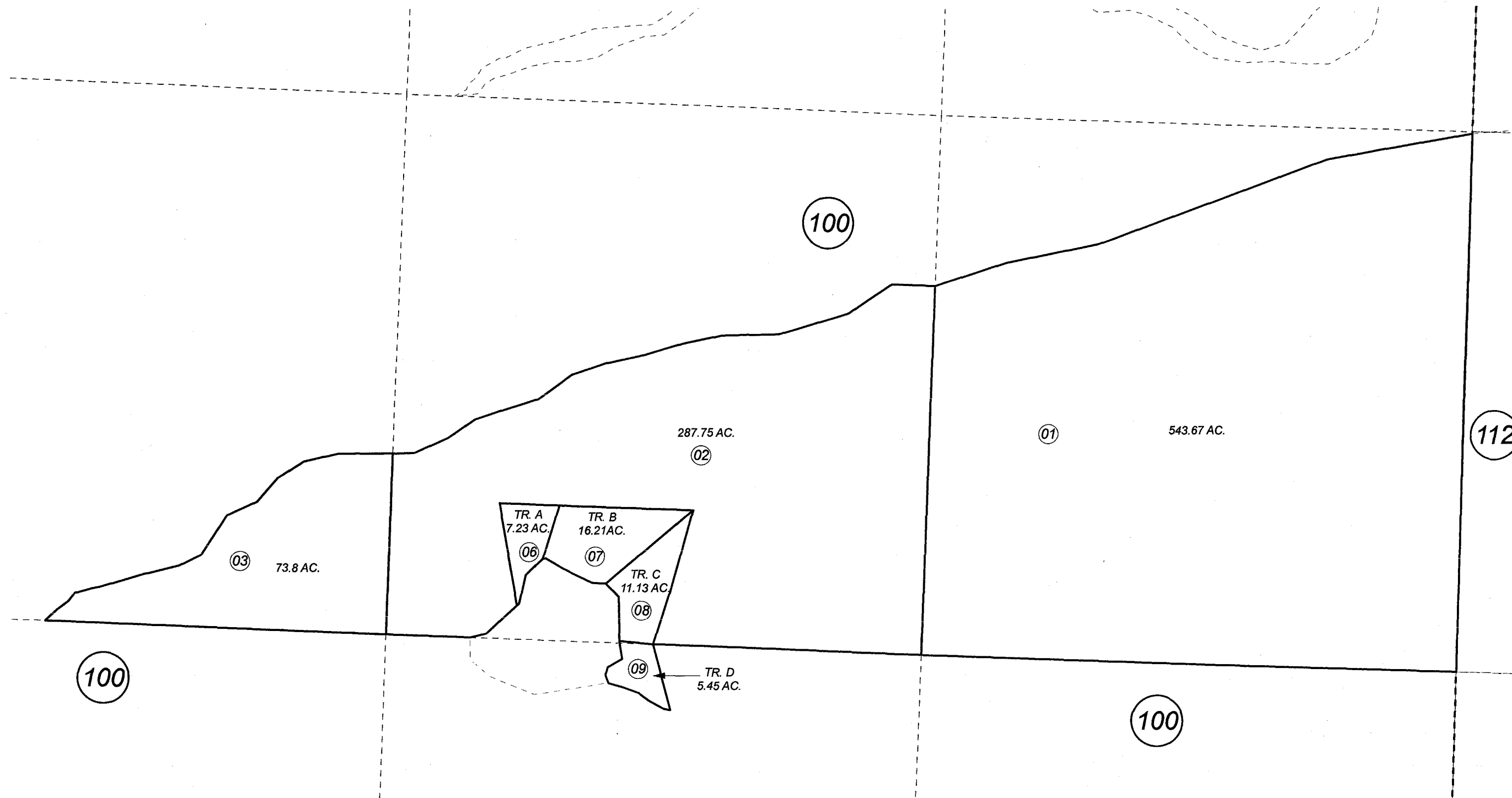


POR. SEC. 10, 11 & 12, T06N, R18W, S.M.

221-101



DECEMBER 31, 2008

For 2009 assessment roll		
Delete	Add	Revise
To		
	7-9	2, 6



Assessor's Map
Kenai Peninsula Borough

ALASKA STATE LAND SURVEY 2005-24 AN2007138

This map is prepared for Kenai Peninsula Borough Assessing Dept. use only and is not intended for conveyance nor is it a survey.
Note- Assessor's block Numbers Shown in Ellipses
Assessor's Parcel Numbers Shown in Circles