

LANDE SUB. NO. 2

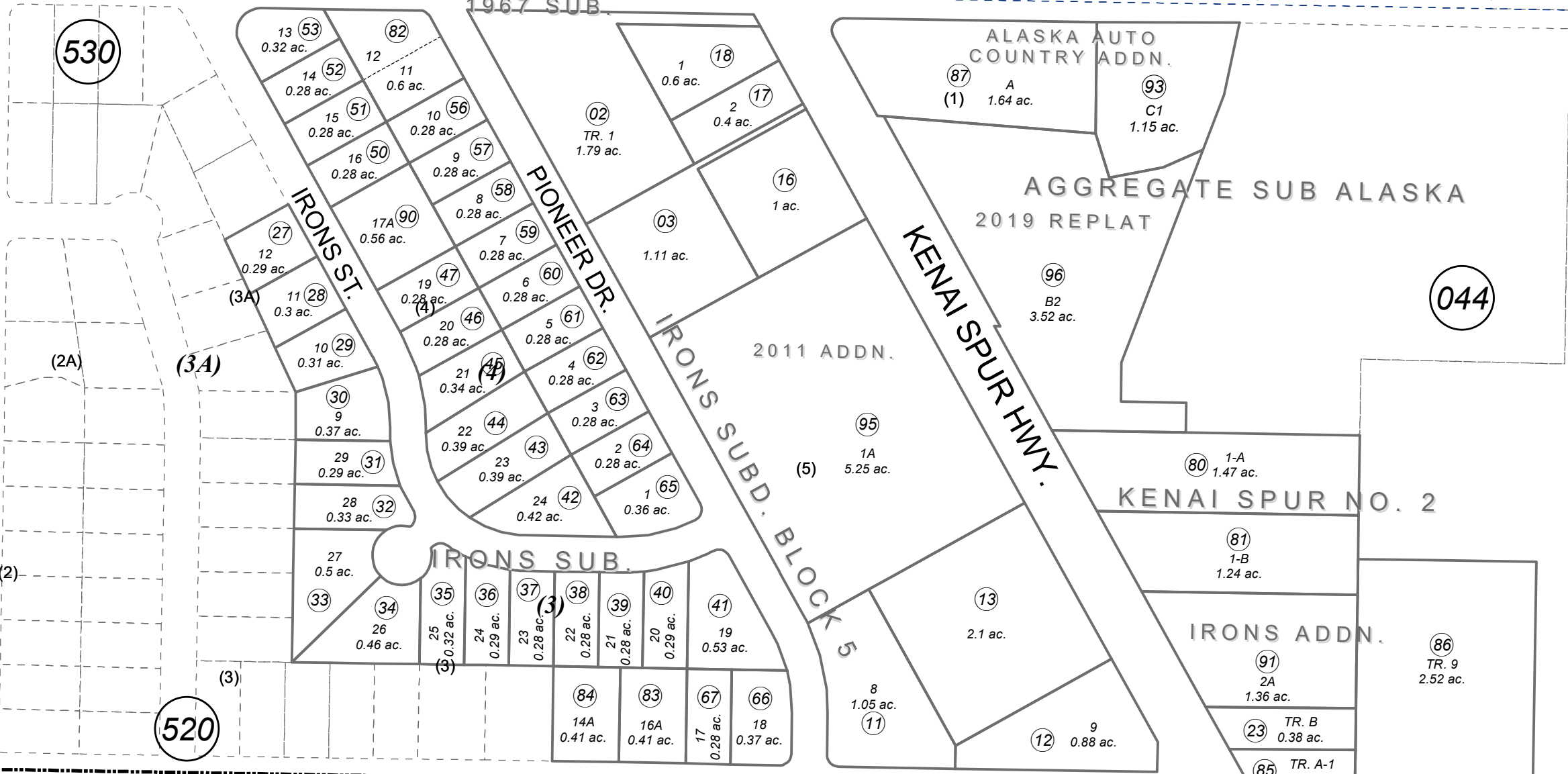
120

IRONS 1967 SUB.

FRONTIER AVE.

SEC. 20
SEC. 29

530



044

(2A)

(3A)

(2)

(3)

520

SOLDOTNA CITY LIMITS

KNIGHT DR.

BK
059

NOVEMBER 5, 2020

For 2021 assessment roll		
Delete	Add	Revise
	To	
97	057-044+	



0 50 100 200 Feet

Assessor's Map
Kenai Peninsula Borough

- IRONS 1967 SUB KN0000000
- LANDE SUB KN0000980
- IRONS SUB TRACTS A, B & C KN0730047
- IRONS SUB BLOCK 5 KN0740049
- IRONS SUB BLOCK 4 & REMAINDER OF BLOCKS KN0750100
- STEN SUB KN0760028
- KENAI SPUR SUB KN0820018
- KENAI SPUR SUB NO 2 KN0820071
- IRONS SUB WOLF ADDN KN0900008
- GERHART HOMESTEAD SUB 1996 ADDN KN0970099
- AGGREGATE SUB ALASKA AUTO COUNTRY ADDN KN2003033
- IRONS SUB BURZINSKI REPLAT KN2003041
- KENAI SPUR SUB IRONS ADDN KN2004128
- AGGREGATE SUB ALASKA AUTO COUNTRY ADDN NO TWO KN2007027
- IRONS SUB BLOCK 5 2011 ADDN KN2011082
- AGGREGATE SUB 2019 REPLAT KN2019039

This map is prepared for Kenai Peninsula Borough Assessing Dept. use only and is not intended for conveyance nor is it a survey.

Note- Assessor's block Numbers Shown in Ellipses
Assessor's Parcel Numbers Shown in Circles