

039-130

POR. SEC. 25, T06N, R12W, S.M.

E.

7

123

THIRD ST.

FOURTH ST.

FIFTH ST.

FLORIDA AVE.

TEXAS AVE.

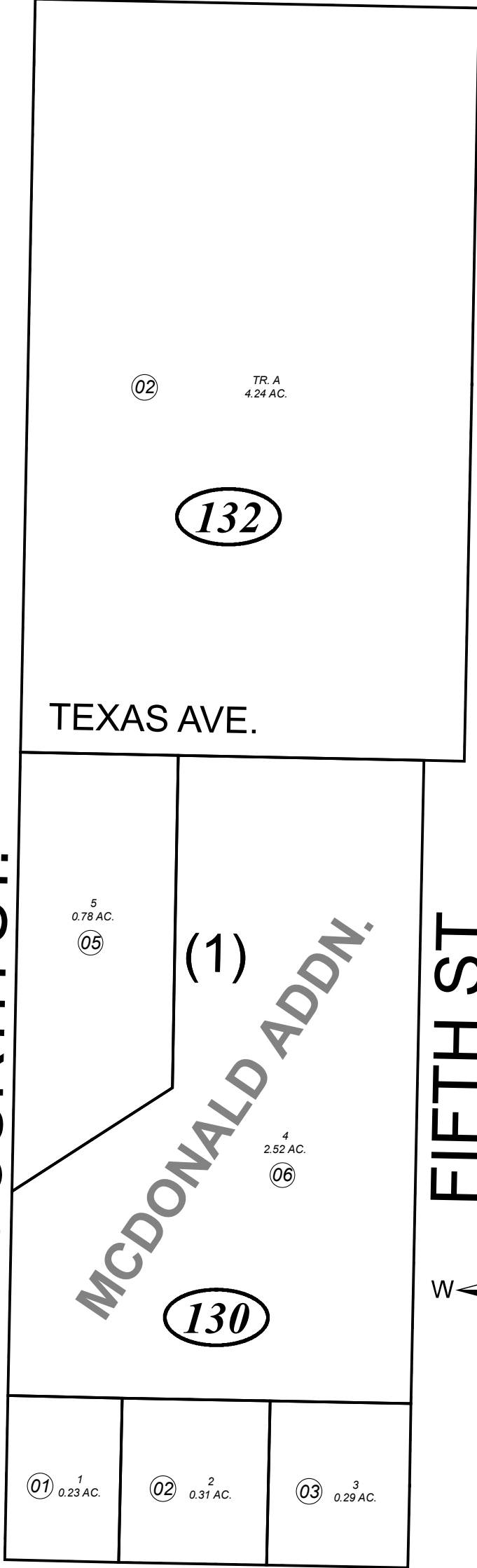
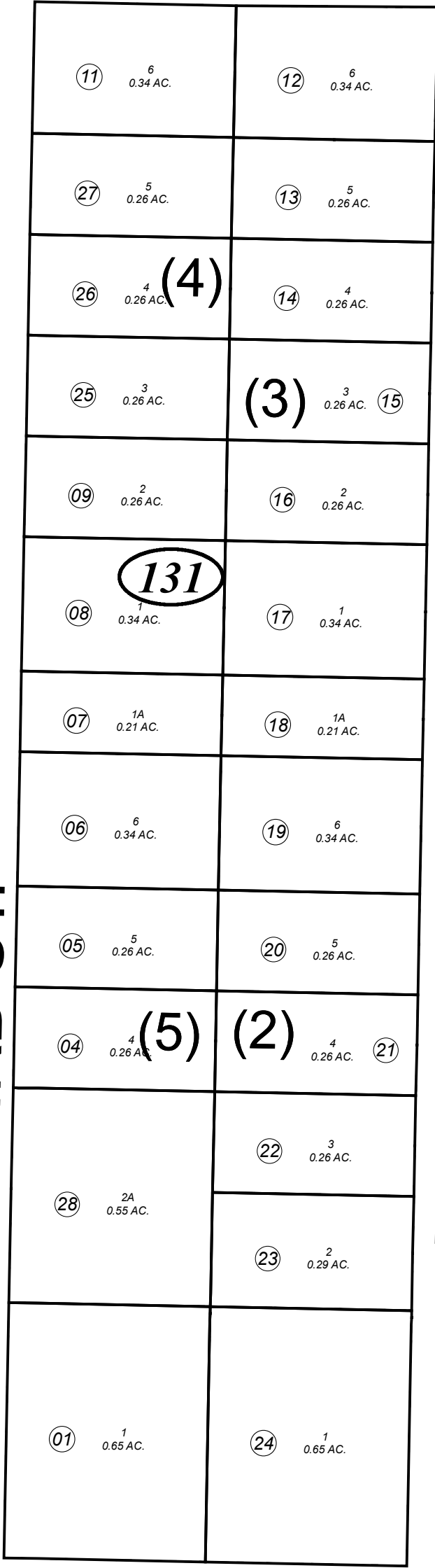
MCDONALD ADDN.

110

010

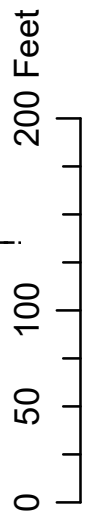
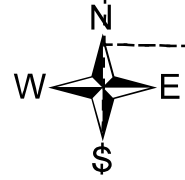
010

BK 043



JANUARY 11, 2019

For 2019 assessment roll	
Delete	Revise
13004	13005
	13006



MOMMSENS SUB REPLAT OF ADDN 1 & 2 KN0001355
 MOMMSENS SUB ADDN NO 2 KN0760066
 MOMMSENS SUB 1988 ADDN KN0910012
 MOMMSENS SUB PARISH REPLAT KN2004093
 MOMMSENS SUB MCDONALD ADDN KN2018101

Note- Assessor's block Numbers Shown in Ellipses
 Assessor's Parcel Numbers Shown in Circles

This map is prepared for Kenai Peninsula Borough Assessing Dept. use only and is not intended for conveyance nor is it a survey.

Assessor's Map
 Kenai Peninsula Borough