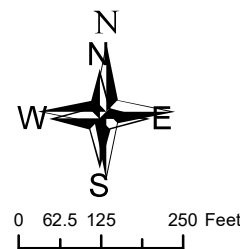
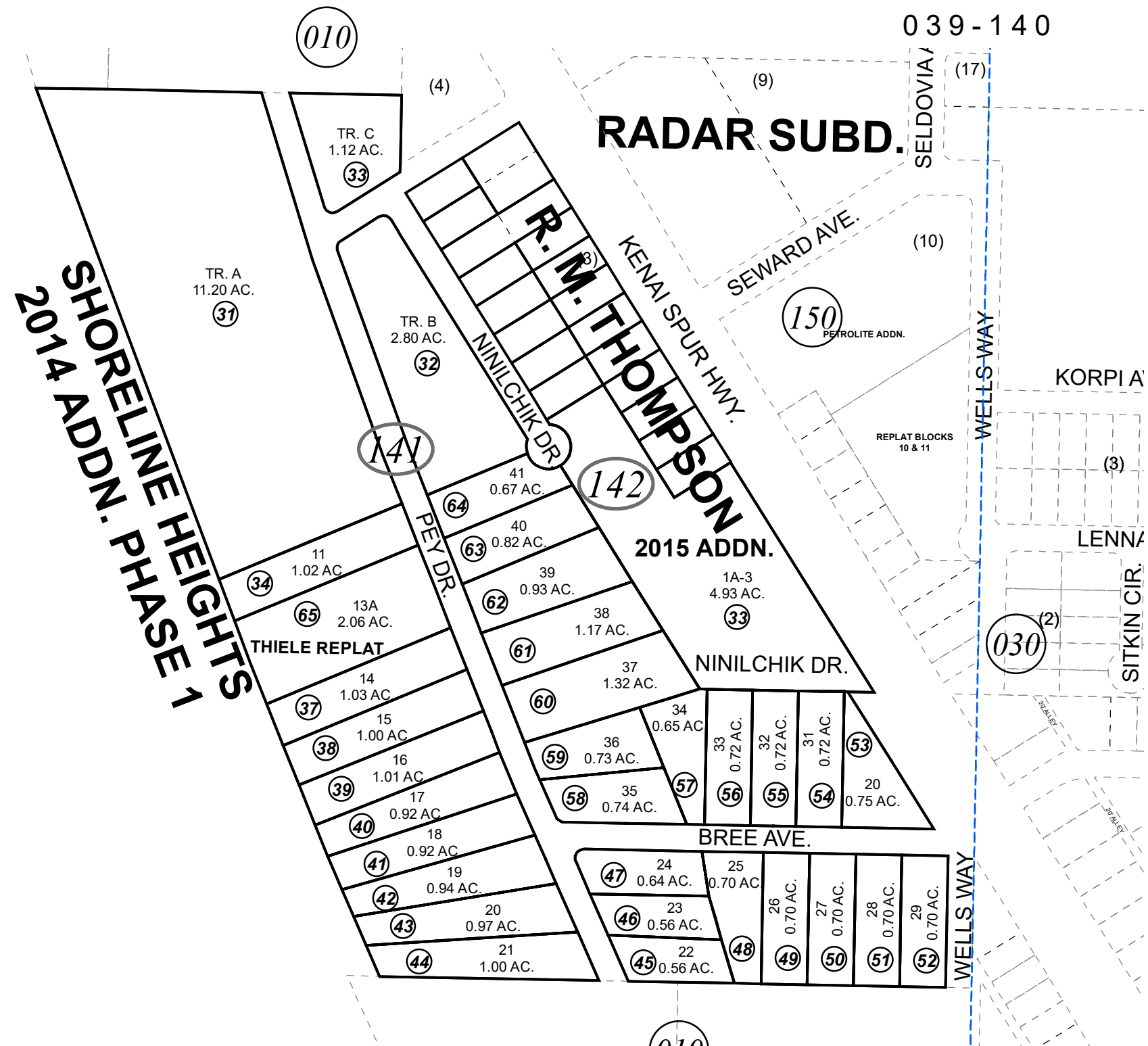
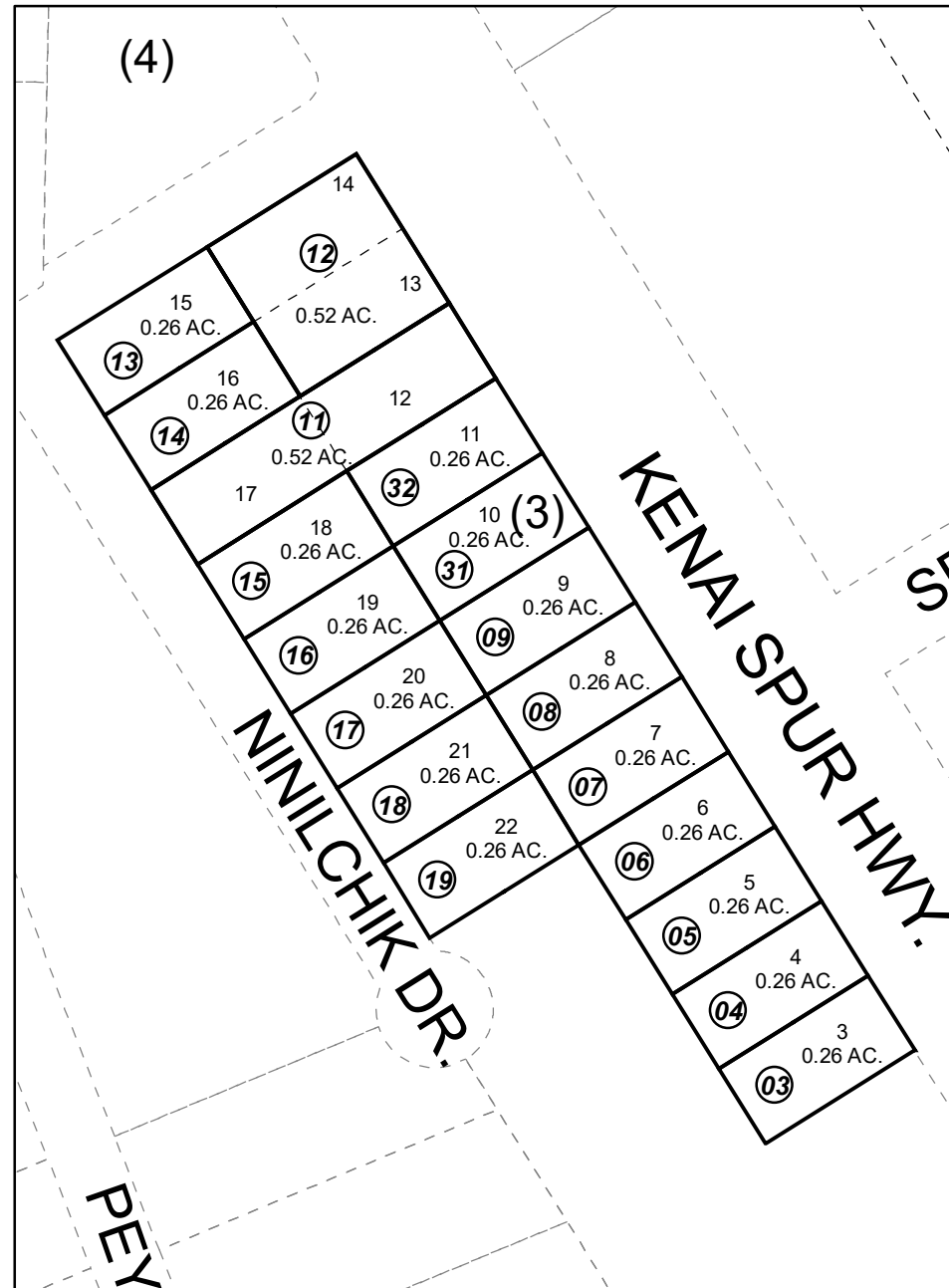


POR. SEC. 26, T06N, R12W, S.M.

039-140

DETAIL



DECEMBER 2, 2019

For 2020 assessment roll		
Delete	Add	Revise
	To	
14135,36		14165

Assessor's Map
Kenai Peninsula Borough

KN0000706 RADAR SUB
 KN2015024 SHORELINE HEIGHTS 2014 ADDN PHASE 1
 KN2016030 R M THOMPSON SUB 2015 ADDN
 KN2019050 SHORELINE HEIGHTS THIELE REPLAT

This map is prepared for Kenai Peninsula Borough Assessing Dept. use only and is not intended for conveyance nor is it a survey.

Note- Assessor's block Numbers Shown in Ellipses
 Assessor's Parcel Numbers Shown in Circles